

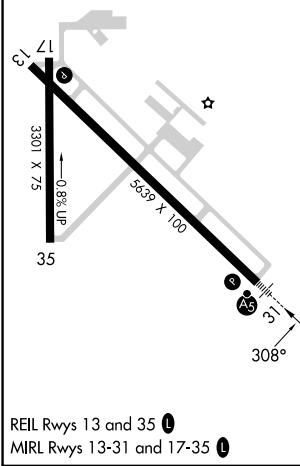
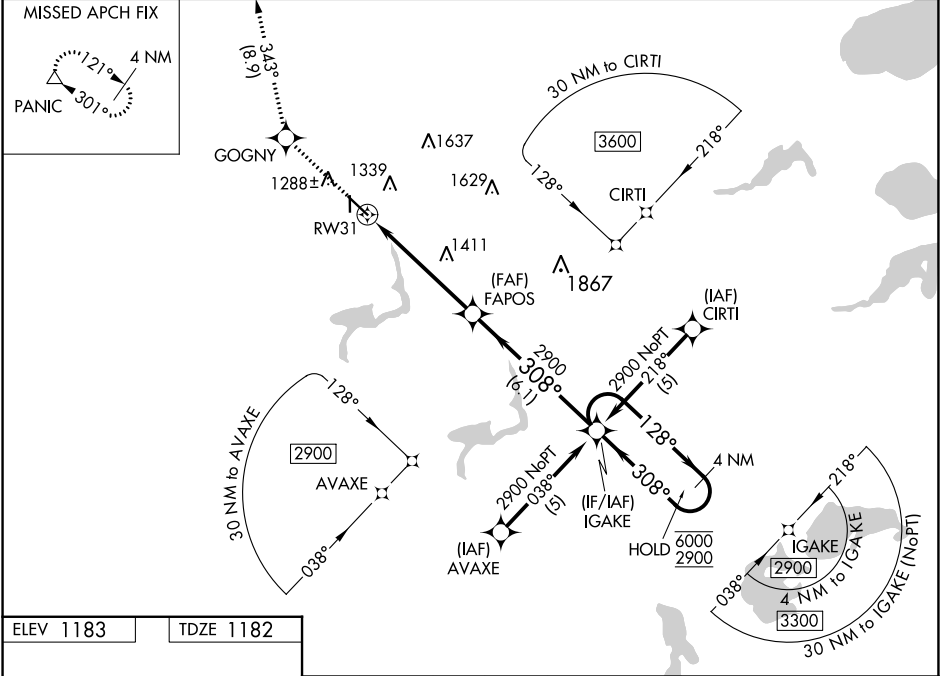
WAAS CH 42614 W31A	APP CRS 308°	Rwy Idg 5639 TDZE 1182 Apt Elev 1183
----------------------------------------	------------------------	-----------------------------------------------------------------

RNAV (GPS) RWY 31

FERGUS FALLS MUNI/EINAR MICKELSON FLD (FFM)

RNP APCH-GPS.	MALSR 	MISSED APPROACH: Climb to 3000 direct GOGNY and on track 343° to PANIC and hold.
<p> For uncompensated Baro-VNAV systems, LNAV/VNAV NA below -17°C or above 54°C. For inop ALS, increase LNAV/VNAV all Cats visibility to 1 SM and LNAV Cat D visibility to 1 3/8 SM.</p>		

AWOS-3PT 119.05	MINNEAPOLIS CENTER 126.1 269.2	UNICOM 122.8 (CTAF)
---------------------------	------------------------------------------	--------------------------------



3000	GOGNY	tr 343°	PANIC	FAPOS	IGAKE	4 NM Holding Pattern
*LNAV only.						
*1.3 NM to RW31		2900		308° → 6000		
RW31		2900		← 308° 2900		
1.3 NM		3.9 NM		6.1 NM		
CATEGORY	A	B	C	D		
LPV DA	1382-1/2		200 (200-1/2)			
LNAV/VNAV DA	1545-5/8		363 (400-5/8)			
LNAV MDA	1640-1/2 458 (500-1/2)		1640-7/8 458 (500-7/8)			
CIRCLING	1640-1 457 (500-1)	1740-1 557 (600-1)	1820-1 3/4 637 (700-1 3/4)	1940-2 1/2 757 (800-2 1/2)		

NC-1, 03 OCT 2024 to 31 OCT 2024

NC-1, 03 OCT 2024 to 31 OCT 2024