

LOC I-SUS <b>110.55</b>	APP CRS <b>079°</b>	Rwy Idg TDZE Apt Elev	<b>7414</b> <b>462</b> <b>463</b>
----------------------------	------------------------	-----------------------------	---

# ILS or LOC RWY 8R

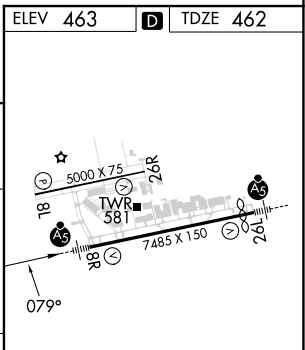
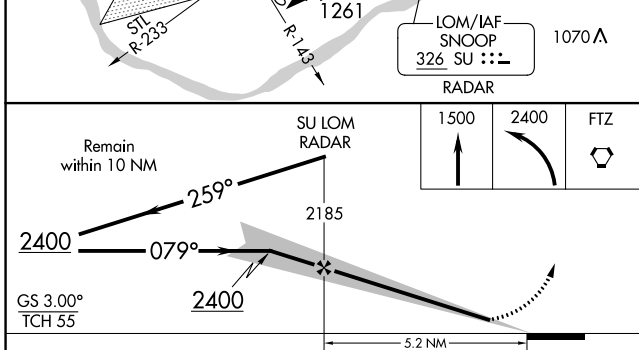
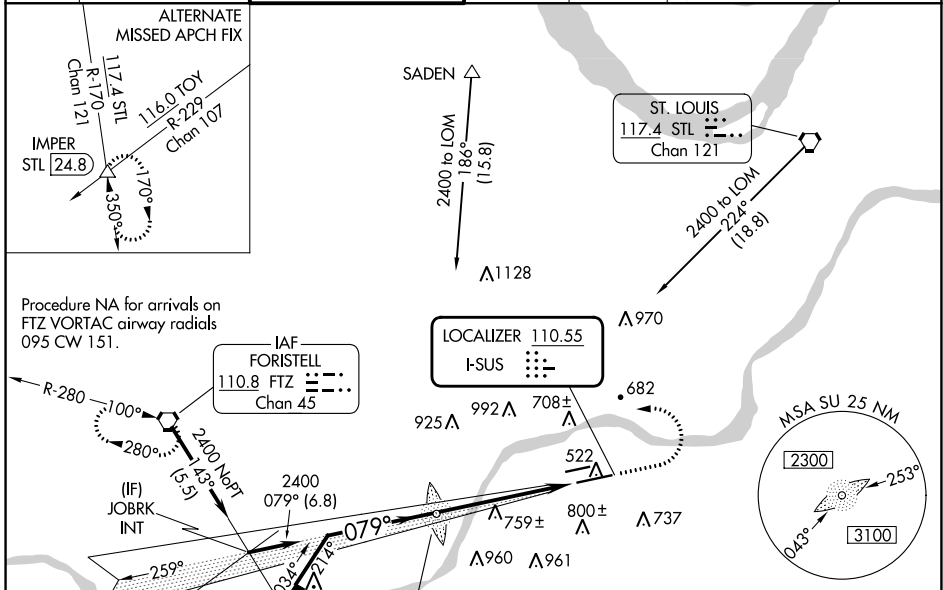
SPIRIT OF ST LOUIS (SUS)

**⚠** When local alimeter setting not received, use St Louis Lambert Intl alimeter setting and increase all DA to 719 feet, all MDA 60 feet, increase S-LOC 8R Cats C/D to RVR 5000 and Circling Cat C visibility ¼ mile. For inop MALS, increase S-LOC 8R Cats C/D visibility to RVR 6000. For inop MALS when using St Louis Lambert Intl alimeter setting, increase S-LOC 8R Cats C/D visibility to 1½ mile.  
 \*RVR 1800 authorized with the use of FD or AP or HUD to DA (NA when using St Louis Lambert Intl alimeter setting).



MISSED APPROACH: Climb to 1500 then climbing left turn to 2400 direct FTZ VORTAC and hold.

ATIS <b>134.8</b>	ST. LOUIS APP CON <b>126.5 254.3</b>	SPIRIT TOWER* <b>124.75</b> (CTAF) <b>0 257.2</b>	GND CON <b>121.7</b>	CLNC DEL <b>133.1</b>	ST. LOUIS CLNC DEL <b>121.7</b> (when tower closed)	UNICOM <b>122.95</b>
----------------------	---	--	-------------------------	--------------------------	---	-------------------------



CATEGORY	A	B	C	D
S-ILS 8R*	662/24 200 (200-½)			
S-LOC 8R	880/24	418 (500-½)	880/40	418 (500-¾)
CIRCLING	1100-1 637 (700-1)	1140-1 677 (700-1)	1160-2 697 (700-2)	1360-3 897 (900-3)

MIRL Rwy 8L-26R	
HIRL Rwy 8R-26L	
FAF to MAP 5.2 NM	
Knots	60 90 120 150 180
Min:Sec	5:12 3:28 2:36 2:05 1:44

NC-3, 03 OCT 2024 to 31 OCT 2024

NC-3, 03 OCT 2024 to 31 OCT 2024