

LINDBERGH EIGHT DEPARTURE

AL-5400 (FAA)

SPIRIT OF ST LOUIS (STLS)
ST. LOUIS, MISSOURI

ATIS
134.8
CLNC DEL
133.1
CLNC DEL
121.7 (when twr closed)
GND CON
121.7
SPIRIT TOWER ★
124.75 257.2
ST LOUIS DEP CON
126.5 254.3

**TOP ALTITUDE:
(JETS) 3000/(PROPS) 2500**

ST. LOUIS
117.4 STL
Chan 121

VICHY
117.7 VIH
Chan 124

FARMINGTON
115.7 FAM
Chan 104

TAKEOFF MINIMUMS

Rwys 8L, 26R: Standard.
Rwy 8R: 200-1¼ or standard with minimum climb of 238' per NM to 700.
Rwy 26L: 300-2 or standard with minimum climb of 231' per NM to 900.

NOTE: DME and RADAR required.

LITTLE ROCK
113.9 LIT
Chan 86

WALNUT RIDGE
114.5 ARG
Chan 92

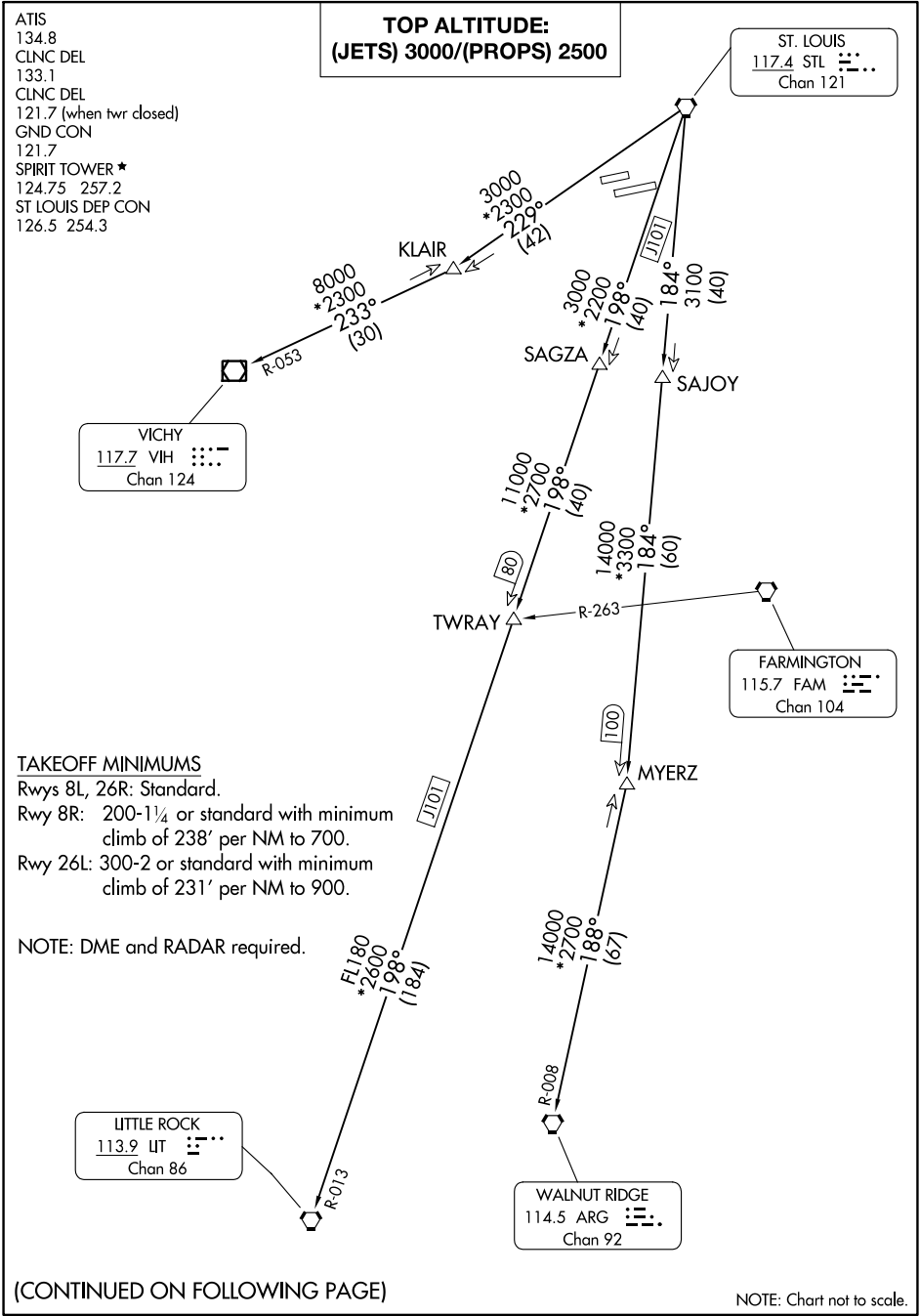
(CONTINUED ON FOLLOWING PAGE)

NOTE: Chart not to scale.

LINDBERGH EIGHT DEPARTURE

NC-3, 03 OCT 2024 to 31 OCT 2024

NC-3, 03 OCT 2024 to 31 OCT 2024





DEPARTURE ROUTE DESCRIPTION

Climb on assigned heading for vector to appropriate route.

JETS: Maintain 3000 or assigned altitude, thence

PROPS: Maintain 2500 or assigned altitude, thence

. . . . (transition). Expect filed altitude 10 minutes after departure.

LITTLE ROCK TRANSITION (LINDY8.LIT): From over STL VORTAC on STL R-198 to TWRAY, then on STL R-198 and LIT R-013 to LIT VORTAC.

MYERZ TRANSITION (LINDY8.MYERZ): From over STL VORTAC on STL R-184 to MYERZ.

VICHY TRANSITION (LINDY8.VIH): From over STL VORTAC on STL R-229 to KLAIR, then on VIH R-053 to VIH VOR/DME.

WALNUT RIDGE TRANSITION (LINDY8.ARG): From over STL VORTAC on STL R-184 to MYERZ, then on ARG R-008 to ARG VORTAC.

NC-3, 03 OCT 2024 to 31 OCT 2024

NC-3, 03 OCT 2024 to 31 OCT 2024