

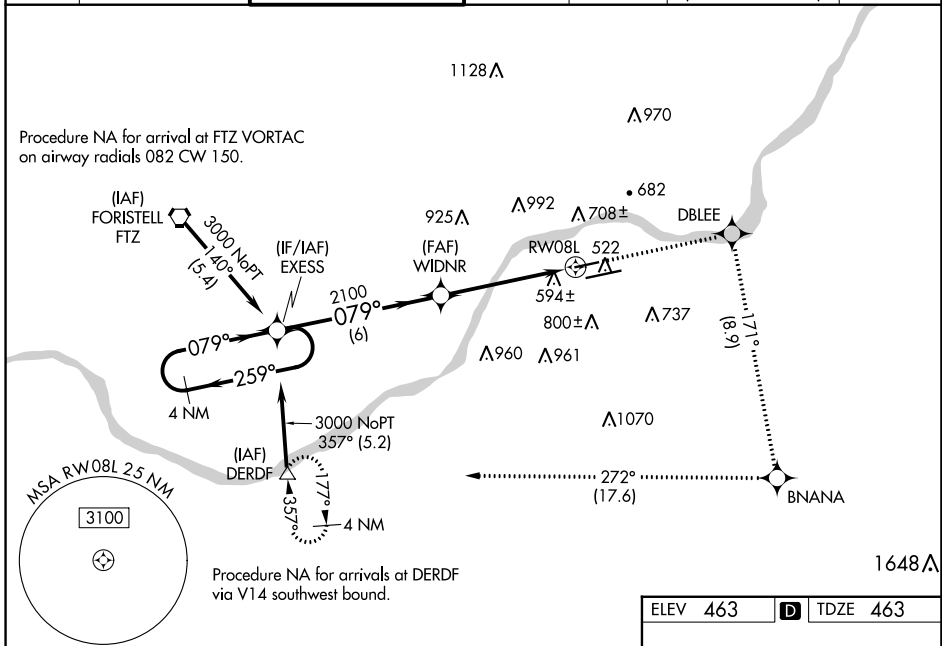
WAAS CH <b>99414</b> <b>W08A</b>	APP CRS <b>079°</b>	Rwy Idg TDZE <b>463</b> Apt Elev <b>463</b>	<b>5000</b>
--	------------------------	---	-------------

# RNAV (GPS) RWY 8L

SPIRIT OF ST LOUIS (SUS)

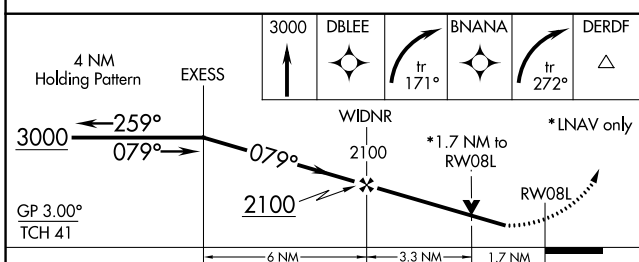
RNP APCH - GPS.	MISSED APPROACH: Climb to 3000 direct DBLEE and right turn on track 171° to BNANA and right turn on track 272° to DERDF and hold.
<p>▼ For uncompensated Baro-VNAV systems, LNAV/VNAV NA below -15°C or above 54°C. Helicopter visibility reduction below 3/4 SM NA. VDP and Baro-VNAV NA when using St Louis Lambert Intl altimeter setting. When local altimeter setting not received, use St Louis Lambert Intl altimeter setting and increase LPV DA to 912, LNAV/VNAV DA to 1132 and all MDA 60 feet, increase LPV all Cats visibility to 1 1/2 miles.</p>	

ATIS <b>134.8</b>	ST. LOUIS APP CON <b>126.5 254.3</b>	SPIRIT TOWER* <b>124.75</b> (CTAF) <b>0 257.2</b>	GND CON <b>121.7</b>	CLNC DEL <b>133.1</b>	ST. LOUIS CLNC DEL <b>121.7</b> (when tower closed)	UNICOM <b>122.95</b>
----------------------	---	--	-------------------------	--------------------------	---	-------------------------

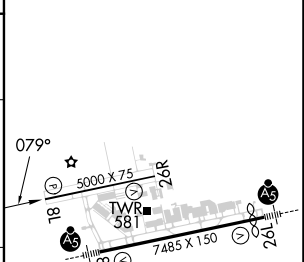


NC-3, 03 OCT 2024 to 31 OCT 2024

NC-3, 03 OCT 2024 to 31 OCT 2024



ELEV 463	<b>D</b> TDZE 463
----------	-------------------



CATEGORY	A	B	C	D
LPV DA	855-1 3/8	392 (400-1 3/8)		NA
LNAV/VNAV DA	1075-2 1/2	612 (700-2 1/2)		NA
LNAV MDA	1040-1	577 (600-1)		NA
CIRCLING	1100-1 637 (700-1)	1140-1 677 (700-1)		NA

MIRL Rwy 8L-26R <b>L</b>
HIRL Rwy 8R-26L <b>L</b>