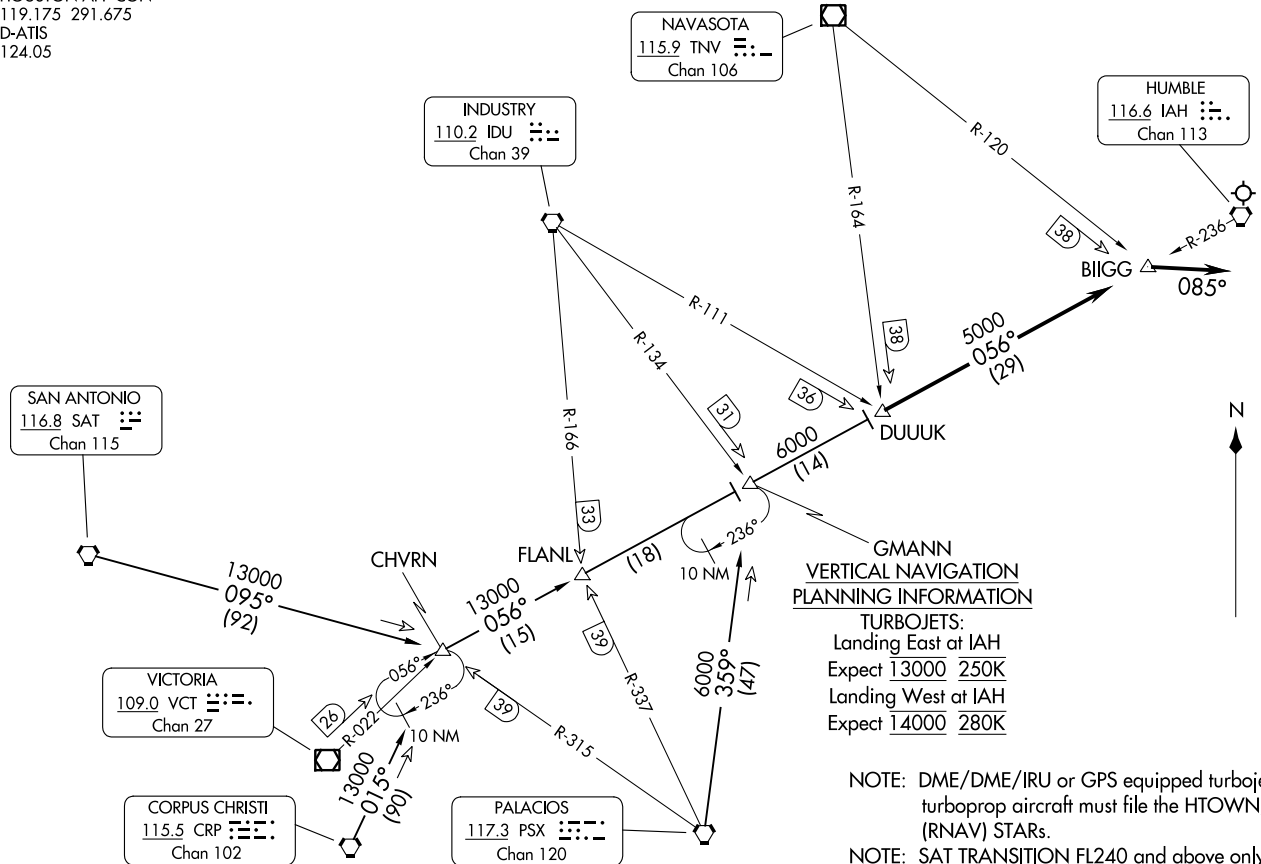


HOUSTON APP CON
119.175 291.675
D-ATIS
124.05



**GMANN
VERTICAL NAVIGATION
PLANNING INFORMATION**
TURBOJETS:
Landing East at IAH
Expect 13000 250K
Landing West at IAH
Expect 14000 280K

NOTE: DME/DME/IRU or GPS equipped turbojet and turboprop aircraft must file the HTOWN/TEJAS (RNAV) STARS.
NOTE: SAT TRANSITION FL240 and above only.

(CONTINUED ON FOLLOWING PAGE)

NOTE: Chart not to scale.

ARRIVAL ROUTE DESCRIPTION

CORPUS CHRISTI TRANSITION (CRP.DUUUK3): From over CRP VORTAC on CRP R-015 to CHVRN, then on IAH R-236 to DUUUK. Thence

PALACIOS TRANSITION (PSX.DUUUK3): From over PSX VORTAC on PSX R-359 to GMANN, then on IAH R-236 to DUUUK. Thence

SAN ANTONIO TRANSITION (SAT.DUUUK3): From over SAT VORTAC on SAT R-095 to CHVRN, then on IAH R-236 to DUUUK. Thence

. . . . From over DUUUK on IAH R-236 to BIIGG. Depart BIIGG heading 085° for vectors to final approach.

SC-5, 03 OCT 2024 to 31 OCT 2024

SC-5, 03 OCT 2024 to 31 OCT 2024