

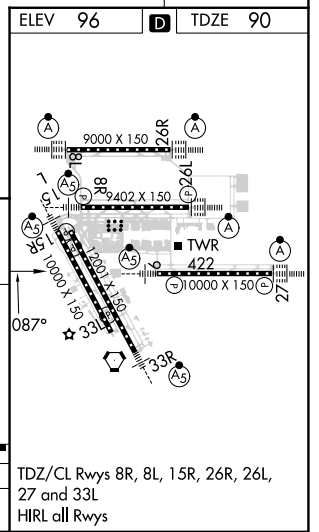
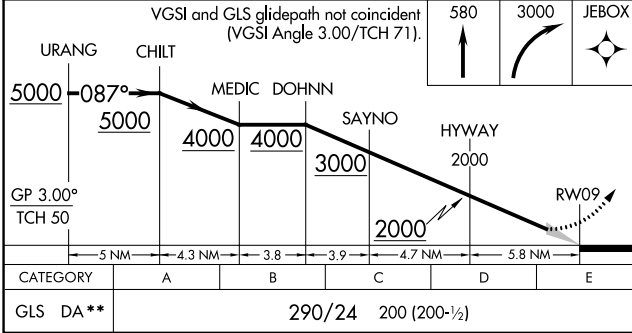
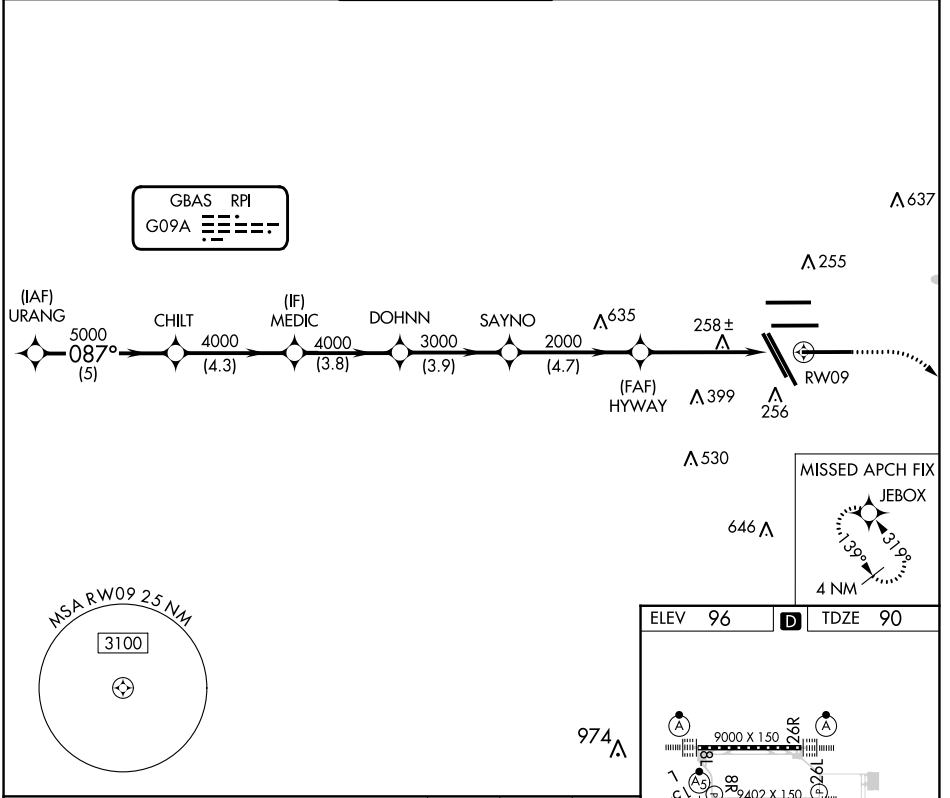
GBAS	APP CRS	Rwy ldg	10000
CH 21895	087°	TDZE	90
RPI G09A		Apt Elev	96

# GLS RWY 9

GEORGE BUSH INTCNL/HOUSTON (IAH)

RNP APCH - GPS.		MALSR	MISSED APPROACH: Climb to 580 then climbing right turn to 3000 direct JEBOX and hold.
<p>Simultaneous approach authorized. Use of FD or AP required during simultaneous operations. Autopilot coupled approach NA below 290. ** RVR 1800 authorized with use of FD or AP or HUD to DA.</p>			

D-ATIS <b>124.05</b>	HOUSTON APP CON <b>120.05 379.1</b> EAST <b>124.35 316.15</b> WEST	HOUSTON TOWER <b>135.15 290.2</b>	GND CON <b>118.575</b>	CLNC DEL <b>128.1</b>	CPDLC
-------------------------	--	--------------------------------------	---------------------------	--------------------------	-------



SC-5, 03 OCT 2024 to 31 OCT 2024

SC-5, 03 OCT 2024 to 31 OCT 2024