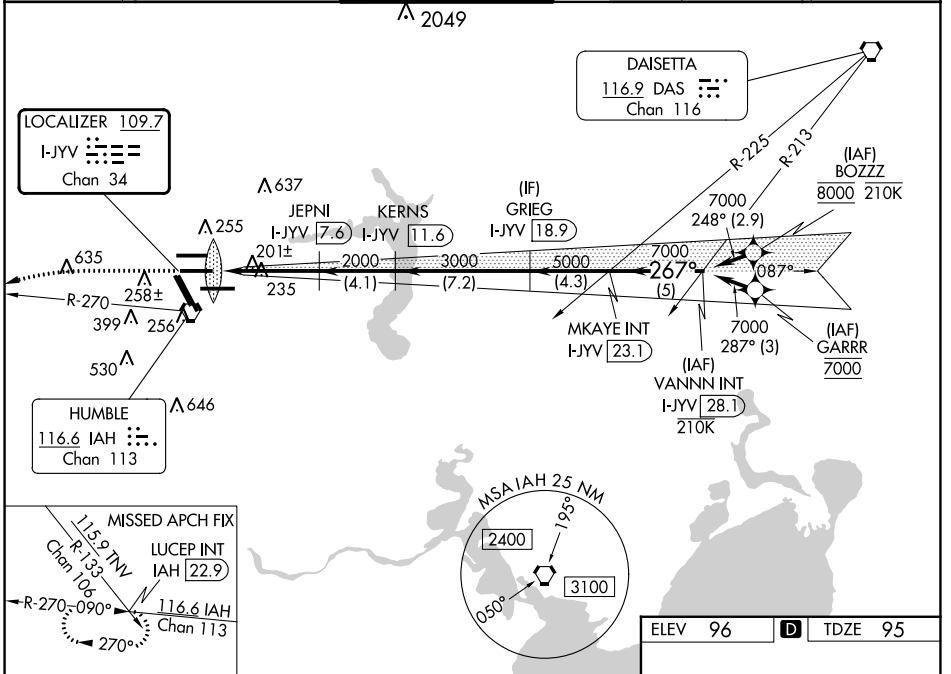


LOC/DME I-JYV 109.7 Chan 34	APP CRS 267°	Rwy Idg 9402 TDZE 95 Apt Elev 96
---	------------------------	---

ILS RWY 26L (SA CAT I)

GEORGE BUSH INTCNL/HOUSTON (IAH)

DME required. From BOZZZ, GARRR: RNAV 1-GPS required.			ALSF-2 		MISSED APPROACH: Climb to 3000 then left turn heading 240° and IAH VORTAC R-270 to LUCEP INT/IAH 22.9 DME and hold.			
Simultaneous approach authorized with Rwy 26R and Rwy 27. Requires specific OPSPEC, MSPEC, or LOA approval and use of HUD to DH.			D-ATIS 124.05	HOUSTON APP CON 120.05 379.1 EAST 124.35 316.15 WEST	HOUSTON TOWER 125.35 290.2	GND CON 118.575	CLNC DEL 128.1	CPDLC

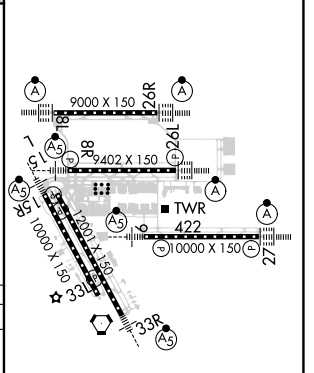


SC-5, 03 OCT 2024 to 31 OCT 2024

SC-5, 03 OCT 2024 to 31 OCT 2024

3000	hdg 240°	IAH R-270	LUCEP INT	VGSI and ILS glidepath not coincident (VGSI Angle 3.00/TCH 71).
3000	IM	JEPNI I-JYV (7.6)	KERNS I-JYV (11.6)	GRIEG I-JYV (18.9)
2000	2000	2000	3000	5000
267°	267°	267°	267°	267°
7000	7000	7000	7000	7000
GS 3.00°	TCH 56			
1042	5.8 NM	4.1 NM	7.2 NM	4.3 NM
5 NM				
CATEGORY	A	B	C	D
S-ILS 26L	RA 152/14 150 DA 245			

ELEV 96	D	TDZE 95
---------	----------	---------



SA CATEGORY I ILS - SPECIAL AIRCREW & AIRCRAFT CERTIFICATION REQUIRED

TDZ/CL Rwy's 8R, 8L, 15R, 26R, 26L, 27 and 33L
HIRL all Rwy's