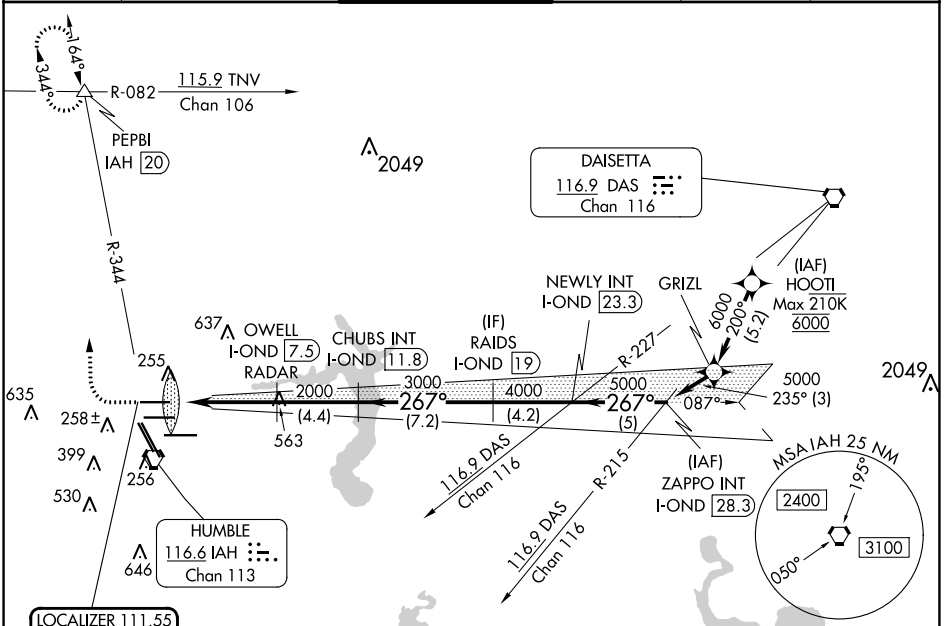


LOC/DME I-OND 111.55 Chan 52 (Y)	APP CRS 267°	Rwy Idg 9000 TDZE 95 Apt Elev 96
--	------------------------	---

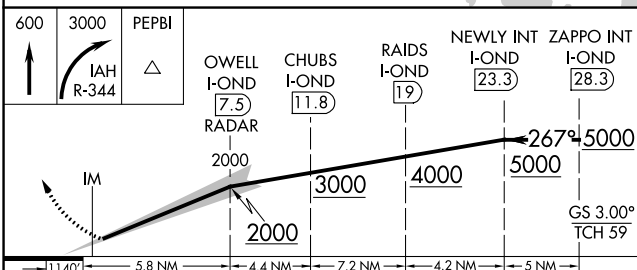
ILS RWY 26R(SA CAT I)

GEORGE BUSH INTCNL/HOUSTON (IAH)

DME required. From HOOI: RNAV 1-GPS required.		ALSF-2 	MISSED APPROACH: Climb to 600 then climbing right turn to 3000 on IAH VORTAC R-344 to PEPBI INT/ IAH 20 DME and hold.				
Simultaneous approach authorized with Rwy 26L and Rwy 27. Requires specific OPSPEC, MSPEC or LOA approval and use of HUD to DH.		D-ATIS 124.05	HOUSTON APP CON 120.05 379.1 EAST 124.35 316.15 WEST	HOUSTON TOWER 120.725 290.2	GND CON 118.575	CLNC DEL 128.1	CPDLC

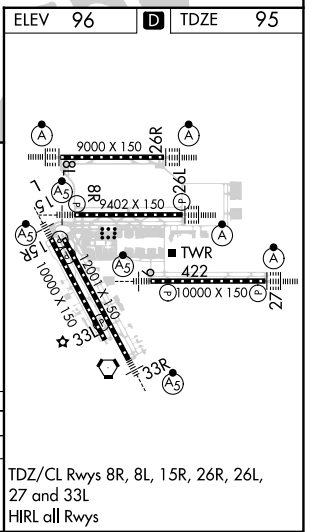


600	3000	PEPBI
↑	↘	△
IAH	R-344	



CATEGORY	A	B	C	D
S-ILS-26R	RA 157/14 150 DA 245			

SA CATEGORY I ILS - SPECIAL AIRCREW & AIRCRAFT CERTIFICATION REQUIRED



TDZ/CL Rwy's 8R, 8L, 15R, 26R, 26L, 27 and 33L
HIRL all Rwy's

SC-5, 03 OCT 2024 to 31 OCT 2024

SC-5, 03 OCT 2024 to 31 OCT 2024