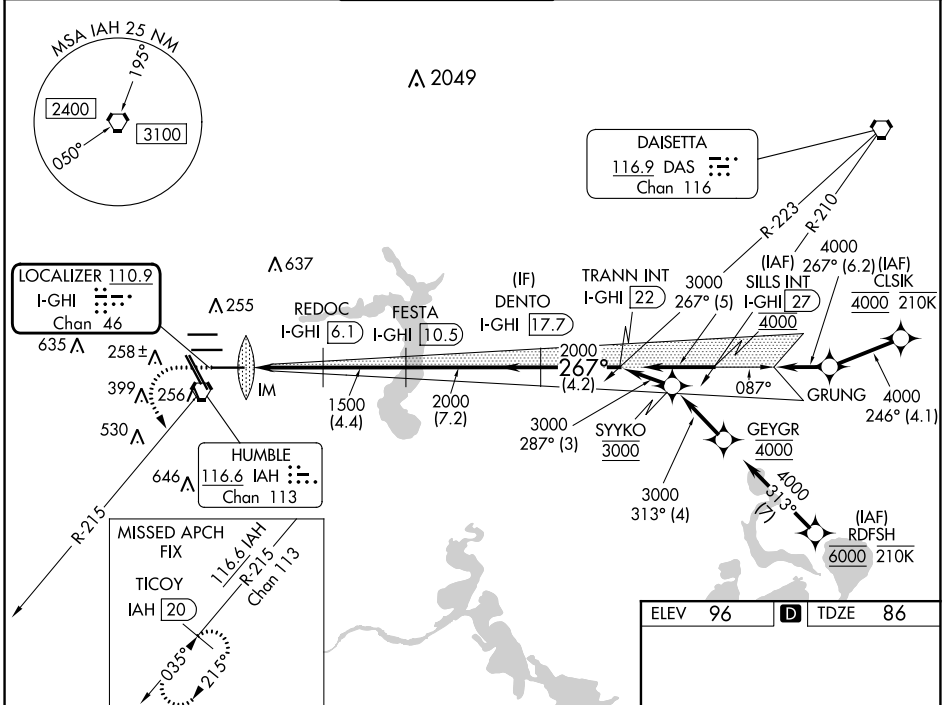


LOC/DME I-GHI 110.9 Chan 46	APP CRS 267°	Rwy Idg 10000 TDZE 86 Apt Elev 96
---	------------------------	--

ILS RWY 27 (CAT II & III)

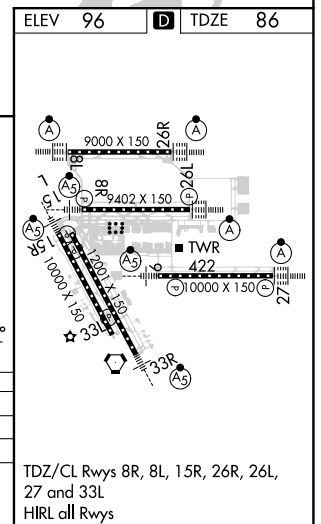
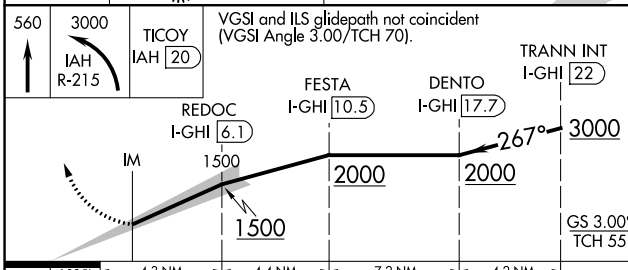
GEORGE BUSH INTCNL/HOUSTON (IAH)

RNAV 1-GPS or RADAR required for procedure entry. DME required.		ALSF-2 			
Simultaneous approach authorized. Use of FD or AP required during simultaneous operations. Cat II: RVR 1000 authorized with specific OPSPEC, MSPEC, or LOA approval and use of autoland or HUD to touchdown.		MISSED APPROACH: Climb to 560 then climbing left turn to 3000 on IAH VORTAC R-215 to TICOY/IAH 20 DME and hold.			
D-ATIS 124.05	HOUSTON APP CON 120.05 379.1 EAST 124.35 316.15 WEST	HOUSTON TOWER 135.15 290.2	GND CON 118.575	CLNC DEL 128.1	CPDLC



SC-5, 03 OCT 2024 to 31 OCT 2024

SC-5, 03 OCT 2024 to 31 OCT 2024



CATEGORY	A	B	C	D
S-ILS 27	CAT II RA 101/12 100 DA 186			
S-ILS 27	CAT III RVR 06			

CATEGORY II & III ILS - SPECIAL AIRCREW & AIRCRAFT CERTIFICATION REQUIRED