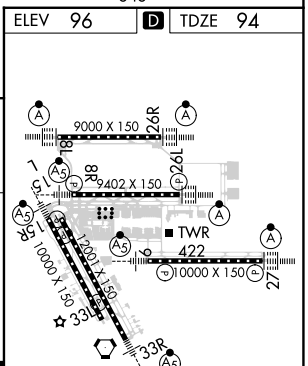
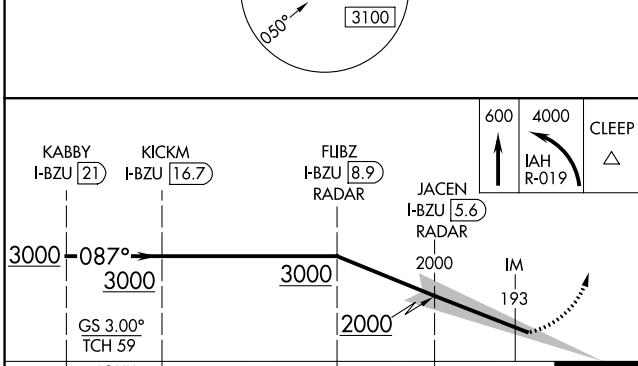
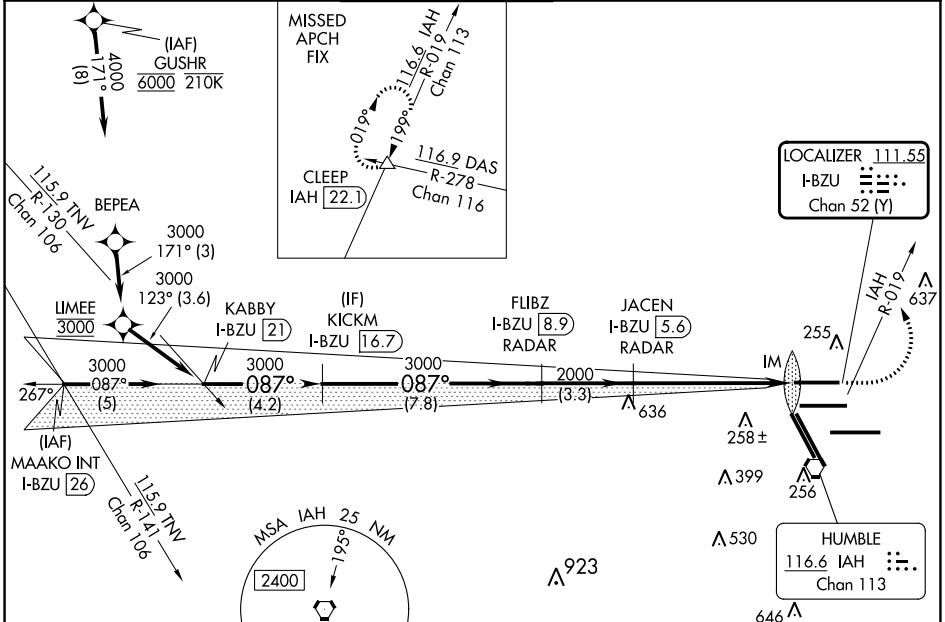


LOC/DME I-BZU 111.55 Chan 52 (Y)	APP CRS 087°	Rwy Idg TDZE Apt Elev	9000 94 96
--	------------------------	-----------------------------	---------------------------------------

ILS RWY 8L (CAT II & III)

GEORGE BUSH INTCNL/HOUSTON (IAH)

DME required. From GUSHR: RNAV 1-GPS required.		ALSIF-2 	MISSED APPROACH: Climb to 600 then climbing left turn to 4000 on IAH VORTAC R-019 to CLEEP INT/IAH 22.1 DME and hold.				
Simultaneous approach authorized with Rwy 8R and Rwy 9. CAT II: RVR 1000 authorized with specific OPSPEC, MSPEC, or LOA approval and use of autoland or HUD to touchdown.			ATIS 124.05	HOUSTON APP CON 120.05 379.1 EAST 124.35 316.15 WEST	HOUSTON TOWER 120.725 290.2	GND CON 118.575	CLNC DEL 128.1



CATEGORY	A	B	C	D
S-ILS 8L	CAT II RA 108/12 100 DA 194			
S-ILS 8L	CAT III RVR 06			

CATEGORY II & III ILS - SPECIAL AIRCREW & AIRCRAFT CERTIFICATION REQUIRED

TDZ/CL Rwy's 8R, 8L, 15R, 26R, 26L, 27 and 33L
HIRL all Rwy's

SC-5, 03 OCT 2024 to 31 OCT 2024

SC-5, 03 OCT 2024 to 31 OCT 2024