

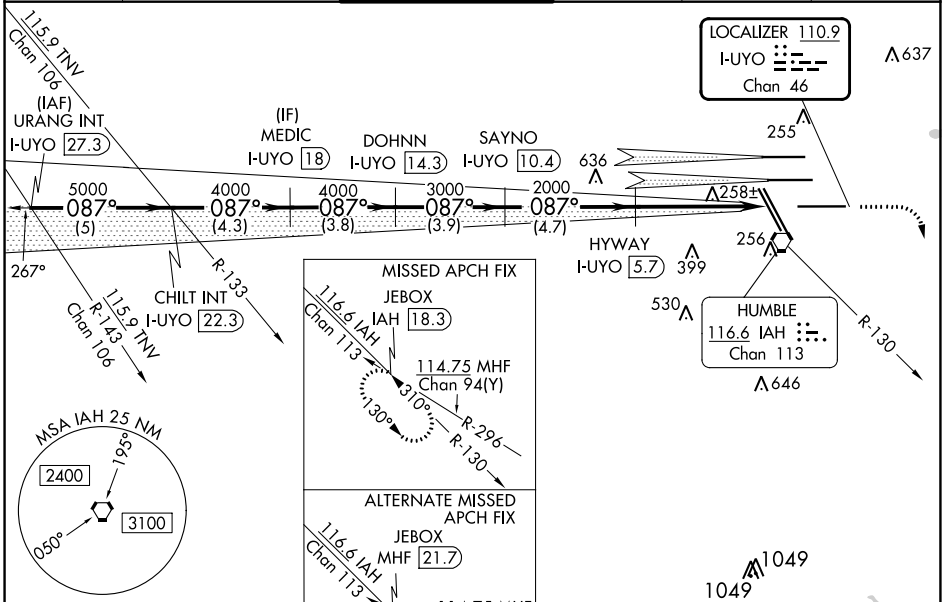
LOC/DME I-UYO <b>110.9</b> Chan <b>46</b>	APP CRS <b>087°</b>	Rwy Idg <b>10000</b> TDZE <b>90</b> Apt Elev <b>96</b>
---	------------------------	--

# ILS RWY 9 (SA CAT I & II)

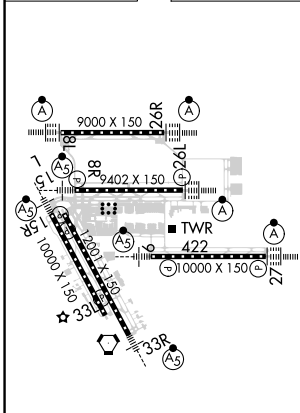
GEORGE BUSH INTCNL/HOUSTON (IAH)

DME required. RADAR required for procedure entry.	MALS R	MISSED APPROACH: Climb to 580 then climbing right turn to 3000 on IAH VORTAC R-130 to JEBOX/IAH 18.3 DME and hold.
<p>Simultaneous approach authorized with Rwy 8L/R. SA CAT I: Requires specific OPSPEC, MSPEC, or LOA approval and use of AUTOLAND or HUD to touchdown. SA CAT II: Reduced lighting: requires specific OPSPEC, MSPEC, or LOA approval and use of AUTOLAND or HUD to touchdown.</p>		

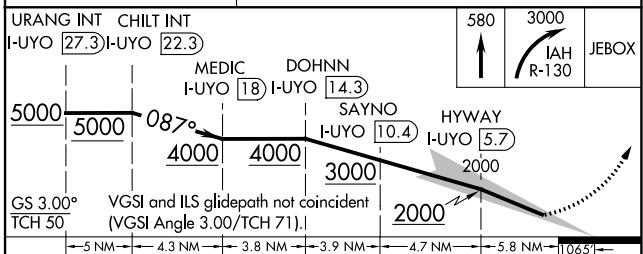
D-ATIS <b>124.05</b>	HOUSTON APP CON <b>120.05 379.1 EAST</b> <b>124.35 316.15 WEST</b>	HOUSTON TOWER <b>135.15 290.2</b>	GND CON <b>118.575</b>	CLNC DEL <b>128.1</b>	CPDLC
-------------------------	--	--------------------------------------	---------------------------	--------------------------	-------



ELEV 96	<b>D</b>	TDZE 90
---------	----------	---------



TDZ/CL Rwy 8R, 8L, 15R, 26R, 26L, 27 and 33L  
HIRL all Rwy



CATEGORY	A	B	C	D
S-ILS 9	SA CAT I RA 148/14	150	DA 240	
S-ILS 9	SA CAT II RA 98/12	100	DA 190	

**SA CATEGORY I and II ILS SPECIAL AIRCREW & AIRCRAFT CERTIFICATION REQUIRED**

# ILS RWY 9 (SA CAT I & II)

SC-5, 03 OCT 2024 to 31 OCT 2024

SC-5, 03 OCT 2024 to 31 OCT 2024