

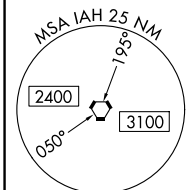
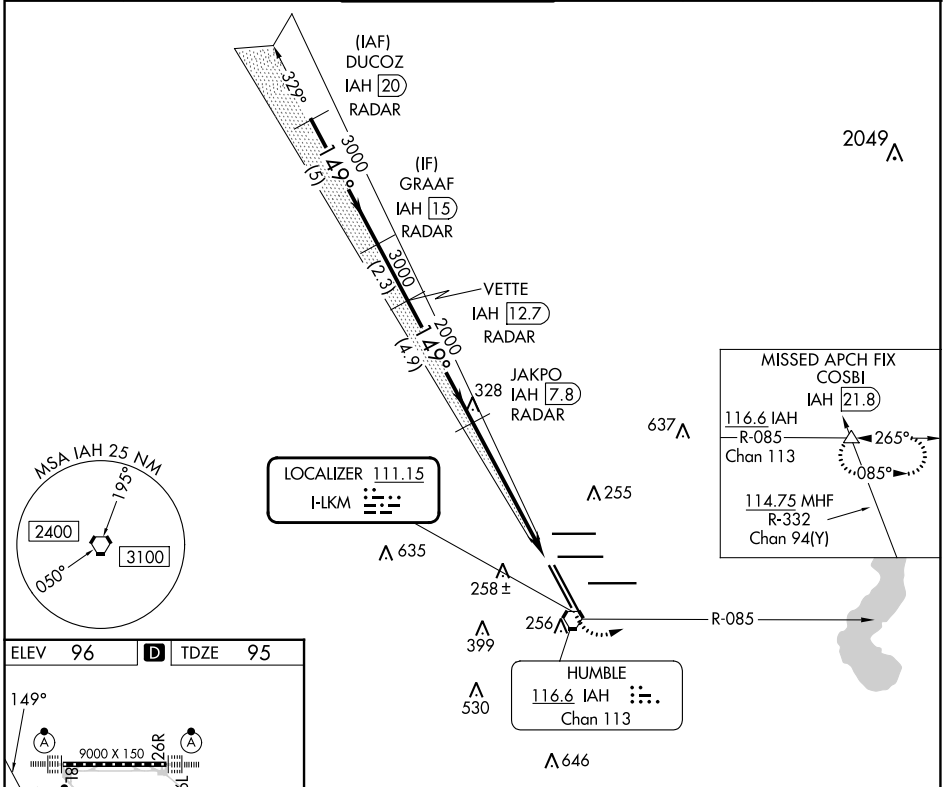
LOC I-LKM 111.15	APP CRS 149°	Rwy Idg 10000 TDZE 95 Apt Elev 96
----------------------------	------------------------	--

ILS or LOC RWY 15R

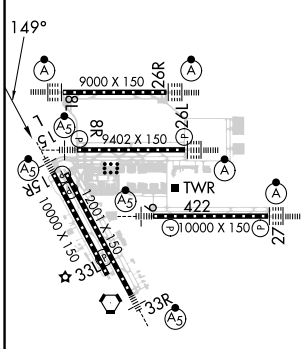
GEORGE BUSH INTCNL/HOUSTON (IAH)

RADAR required for procedure entry. DME or RADAR required.		MALSR	MISSED APPROACH: Climb to 1000 then climbing left turn to 2000 on IAH VORTAC R-085 to COSBI INT/IAH 21.8 DME and hold.
DME from IAH VORTAC. Simultaneous reception of I-LKM and IAH DME required. For inop ALS, increase S-LS 15R Cat E visibility to RVR 4000, and S-LOC 15R Cat C/D/E visibility to 1/2 SM.			

D-ATIS 124.05	HOUSTON APP CON 120.05 379.1 EAST 124.35 316.15 WEST	HOUSTON TOWER 127.3 288.25	GND CON 121.7	CLNC DEL 128.1	CPDLC
-------------------------	--	--------------------------------------	-------------------------	--------------------------	-------



ELEV 96	D	TDZE 95
---------	----------	---------



TDZ/CL Rwy 8R, 15R, 26R, 27, and 33L
HIRL all Rwy

FAF to MAP 5.8 NM					
Knots	60	90	120	150	180
Min:Sec	5:48	3:52	2:54	2:19	1:56

VGSi and ILS glidepath not coincident (VGSi Angle 3.00/TCH 71).		1000	2000	COSBI
DUCOZ IAH 20 RADAR	GRAAF IAH 15 RADAR	VETTE IAH 12.7 RADAR	JAKPO IAH 7.8 RADAR	
3000	3000	3000	2000	* IAH 3.3 IAH 2
GS 3.00°	TCH 54			
	5 NM	2.3 NM	4.9 NM	4.5 NM
CATEGORY	A	B	C	D
S-ILS 15R	295/18 200 (200-1/2)			
S-LOC 15R	580/24	485 (500-1/2)	580/50	485 (500-1)

SC-5, 03 OCT 2024 to 31 OCT 2024

SC-5, 03 OCT 2024 to 31 OCT 2024