

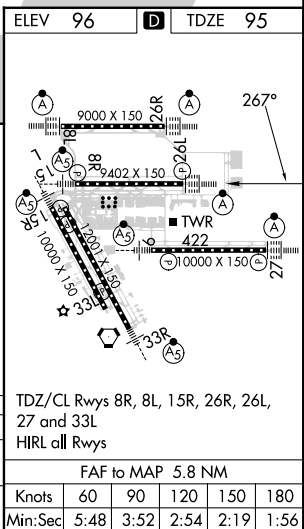
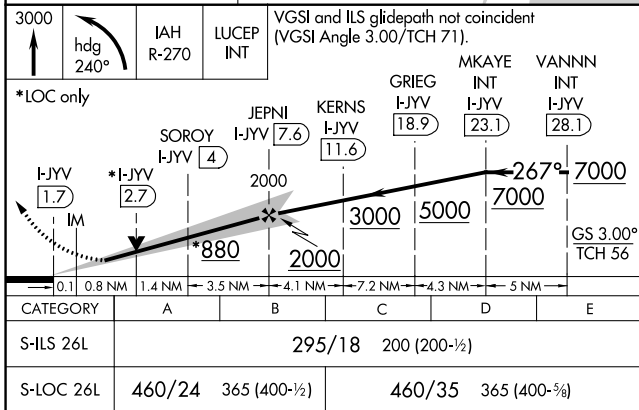
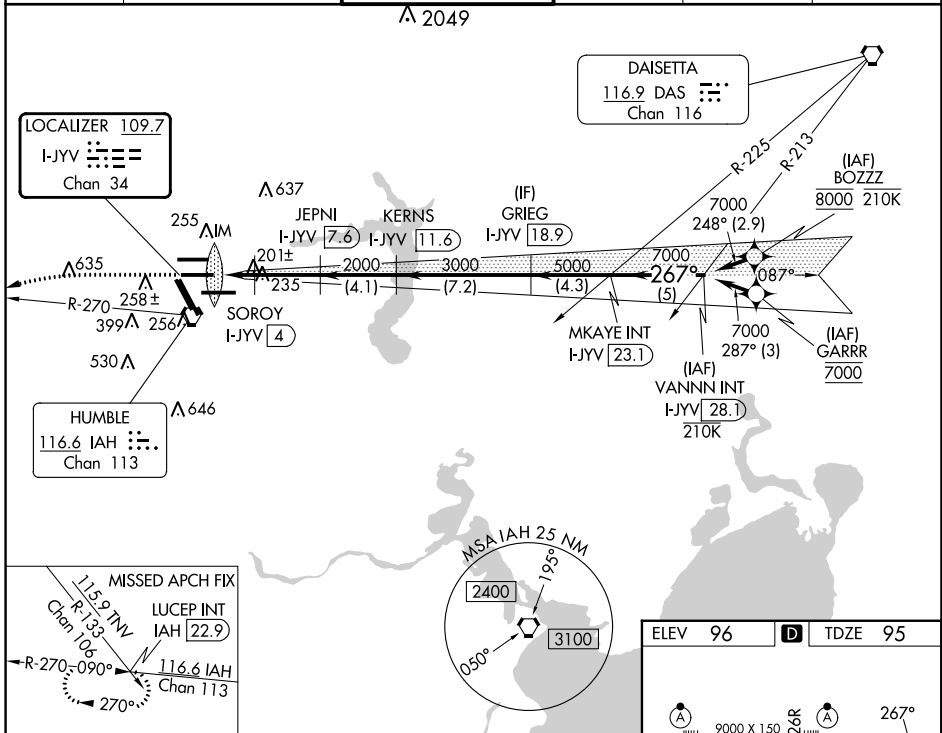
LOC/DME I-JYV 109.7 Chan 34	APP CRS 267°	Rwy Idg TDZE Apt Elev	9402 95 96
---	------------------------	-----------------------------	---------------------------------------

ILS or LOC RWY 26L

GEORGE BUSH INTCNL/HOUSTON (IAH)

DME required. From BOZZZ, GARRR: RNAV 1-GPS required.		ALSF-2 	MISSED APPROACH: Climb to 3000 then left turn heading 240° and IAH VORTAC R-270 to LUCEP INT/IAH 22.9 DME and hold.
Simultaneous approach authorized with Rwy 26R and Rwy 27. For inop ALS, increase S-ILS 26L Cat E visibility to RVR 4000, S-LOC 26L Cat C/D/E visibility to RVR 5000.			

D-ATIS 124.05	HOUSTON APP CON 120.05 379.1 EAST 124.35 316.15 WEST	HOUSTON TOWER 125.35 290.2	GND CON 118.575	CLNC DEL 128.1	CPDLC
-------------------------	--	--------------------------------------	---------------------------	--------------------------	-------



SC-5, 03 OCT 2024 to 31 OCT 2024

SC-5, 03 OCT 2024 to 31 OCT 2024