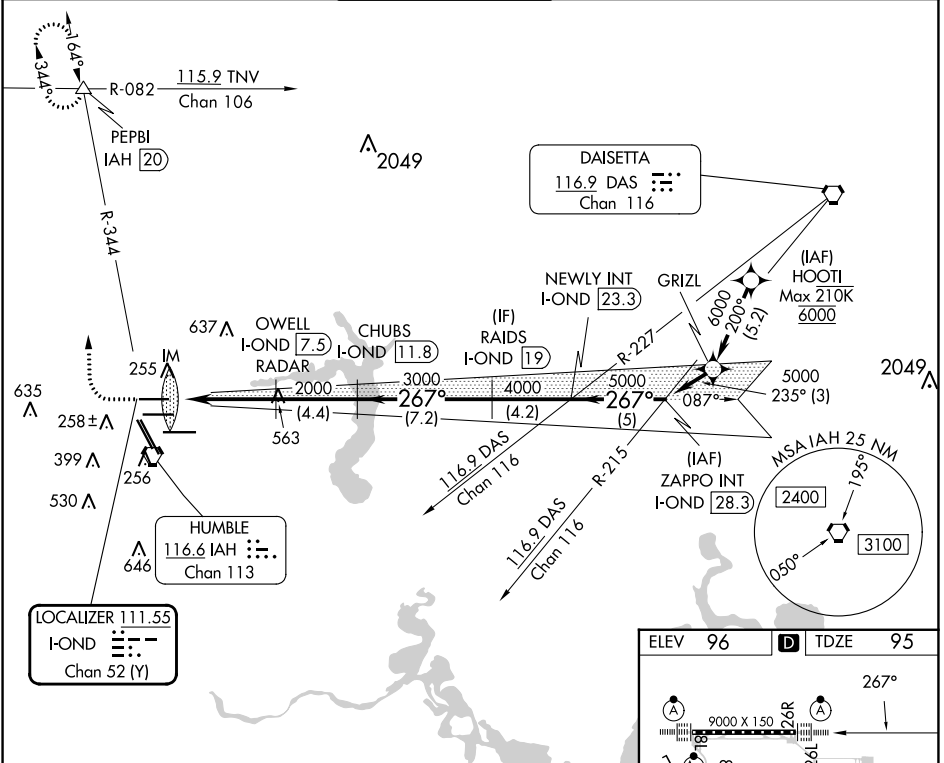


LOC/DME I-OND 111.55 Chan 52 (Y)	APP CRS 267°	Rwy Idg 9000 TDZE 95 Apt Elev 96
--	------------------------	---

ILS or LOC RWY 26R

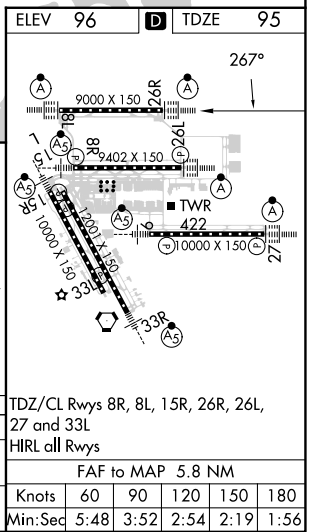
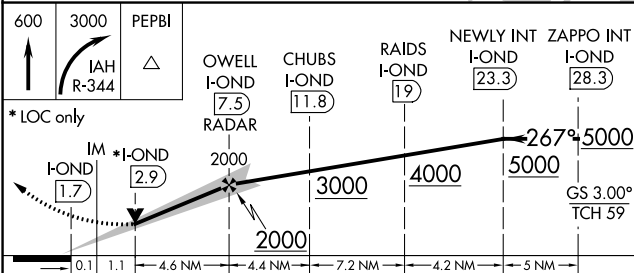
GEORGE BUSH INTCNL/HOUSTON (IAH)

DME required. From HOOI: RNAV 1-GPS required.		ALSF-2 	MISSED APPROACH: Climb to 600 then climbing right turn to 3000 on IAH VORTAC R-344 to PEPBI INT/IAH 20 DME and hold.		
Simultaneous approach authorized with Rwy 26L and Rwy 27. For inop ALS, increase S-ILS 26R Cat E visibility to RVR 4000, and S-LOC 26R Cat C/D/E visibility to 1 1/8 SM.					
D-ATIS 124.05	HOUSTON APP CON 120.05 379.1 EAST 124.35 316.15 WEST	HOUSTON TOWER 120.725 290.2	GND CON 118.575	CLNC DEL 128.1	CPDLC



SC-5, 03 OCT 2024 to 31 OCT 2024

SC-5, 03 OCT 2024 to 31 OCT 2024



CATEGORY	A	B	C	D	E
S-ILS 26R	295/18		200 (200-1/2)		
S-LOC 26R	580/24	485 (500-1/2)		580/50	485 (500-1)

TDZ/CL Rws 8R, 8L, 15R, 26R, 26L, 27 and 33L					
HIRL all Rws					
FAF to MAP 5.8 NM					
Knots	60	90	120	150	180
Min:Seq	5:48	3:52	2:54	2:19	1:56