

(INDIE8.INDIE) 21280

AL-5461 (FAA)

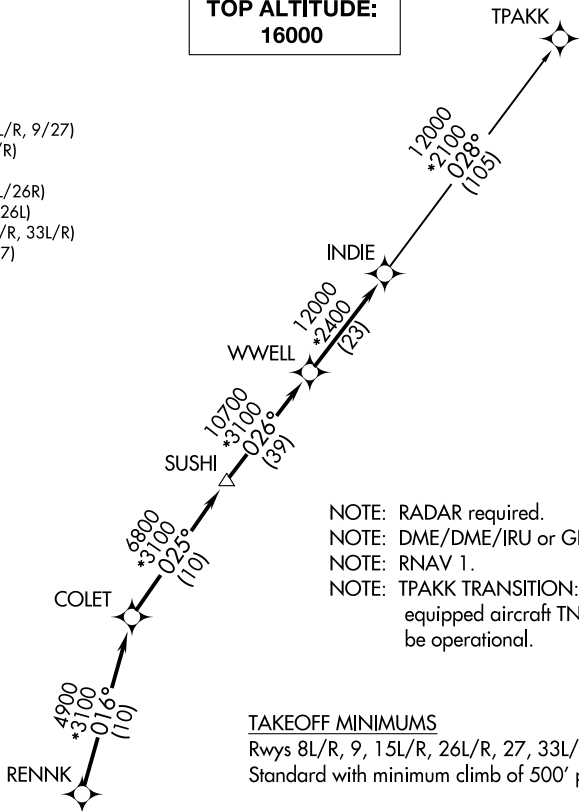
GEORGE BUSH INTCNL/HOUSTON (IAH)

INDIE EIGHT DEPARTURE (RNAV)

HOUSTON, TEXAS

D-ATIS
 124.05
 CLNC DEL
 128.1
 CPDLC
 GND CON
 118.575 (Rwys 8L/R, 26L/R, 9/27)
 121.7 (Rwys 15L/R, 33L/R)
 HOUSTON TOWER
 120.725 290.2 (Rwys 8L/26R)
 125.35 290.2 (Rwys 8R/26L)
 127.3 288.25 (Rwys 15L/R, 33L/R)
 135.15 290.2 (Rwys 9/27)
 HOUSTON DEP CON
 132.25 285.425

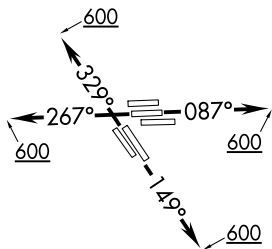
**TOP ALTITUDE:
 16000**



- NOTE: RADAR required.
- NOTE: DME/DME/IRU or GPS required.
- NOTE: RNAV 1.
- NOTE: TPAKK TRANSITION: For non GPS equipped aircraft TNV DME must be operational.

TAKEOFF MINIMUMS

Rwys 8L/R, 9, 15L/R, 26L/R, 27, 33L/R:
 Standard with minimum climb of 500' per NM to 600.



NOTE: Chart not to scale.

DEPARTURE ROUTE DESCRIPTION

TAKEOFF RUNWAYS 8L/R, 9: Climb on heading 087° to 600 for RADAR vectors to RENNK, then
TAKEOFF RUNWAYS 15L/R: Climb on heading 149° to 600 for RADAR vectors to RENNK, then
TAKEOFF RUNWAYS 26L/R, 27: Climb on heading 267° to 600 for RADAR vectors to RENNK, then
TAKEOFF RUNWAYS 33L/R: Climb on heading 329° to 600 for RADAR vectors to RENNK, then
 on track 016° to COLET, then on track 025° to SUSHI, then on track 026° to WWELL, then on track 026° to INDIE, then on (transition). Maintain 16000 or as assigned by ATC. Expect filed altitude 10 minutes after departure.

TPAKK TRANSITION (INDIE8.TPAKK)

INDIE EIGHT DEPARTURE (RNAV)

HOUSTON, TEXAS

(INDIE8.INDIE) 07OCT21

GEORGE BUSH INTCNL/HOUSTON (IAH)

SC-5, 03 OCT 2024 to 31 OCT 2024

SC-5, 03 OCT 2024 to 31 OCT 2024