

(LCH5.LCH) 24137

GEORGE BUSH INTCNTL/HOUSTON (IAH)

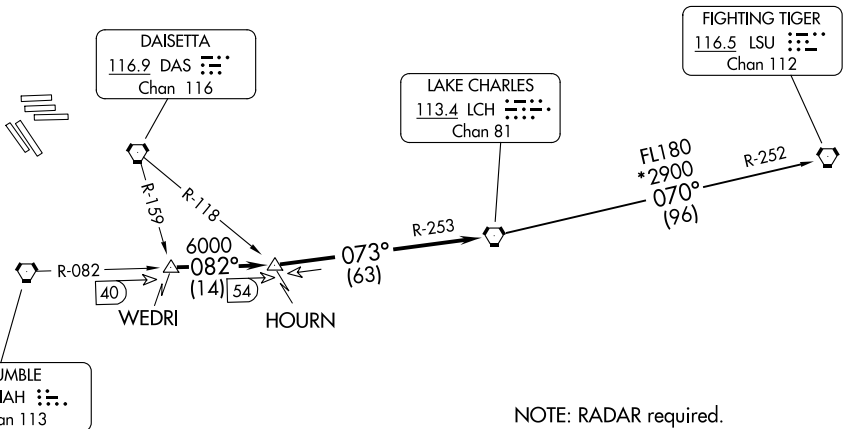
LAKE CHARLES FIVE DEPARTURE

AL-5461 (FAA)

HOUSTON, TEXAS

D-ATIS 124.05
 CLNC DEL 128.1
 CPDLC
 GND CON
 118.575 (Rwys 8L/R, 26L/R, 9/27)
 121.7 (Rwys 15L/R, 33L/R)
 HOUSTON TOWER
 120.725 290.2 (Rwys 8L/26R)
 125.35 290.2 (Rwys 8R/26L)
 127.3 288.25 (Rwys 15L/R, 33L/R)
 135.15 290.2 (Rwys 9/27)
 HOUSTON DEP CON
 127.125 269.075

TOP ALTITUDE:
16000



NOTE: RADAR required.

TAKEOFF MINIMUMS

Rwys 8L/R, 9, 15L/R, 26L/R,
 27, 33L/R Standard.

NOTE: Chart not to scale.



DEPARTURE ROUTE DESCRIPTION

Climb on assigned heading for RADAR vectors to WEDRI INT, maintain 16000.
 Expect filed altitude 10 minutes after departure, thence. . . .

. . . .on IAH R-082 to HOURN INT, then on LCH R-253 to LCH VORTAC.

FIGHTING TIGERS TRANSITION (LCH5.LSU): From over LCH VORTAC on LCH R-070 and LSU R-252 to LSU VORTAC.

LAKE CHARLES FIVE DEPARTURE

(LCH5.LCH) 22JUN17

HOUSTON, TEXAS

GEORGE BUSH INTCNTL/HOUSTON (IAH)

SC-5, 03 OCT 2024 to 31 OCT 2024

SC-5, 03 OCT 2024 to 31 OCT 2024