

RADAR and DME required.

TOP ALTITUDE:
16000

TAKEOFF MINIMUMS

Rwys 8L/R, 9, 27, 15L/R, 26L/R, 33L/R: Standard.



D-ATIS
124.05
CLNC DEL
128.1
CPDLC
GND CON
118.575 (Rwys 8L/R, 26L/R, 9/27)
121.7 (Rwys 15L/R, 33L/R)
HOUSTON TOWER
120.725 290.2 (Rwys 8L/26R)
125.35 290.2 (Rwys 8R/26L)
127.3 288.25 (Rwys 15L/R, 33L/R)
135.15 290.2 (Rwys 9/27)
HOUSTON DEP CON
127.125 269.075

FORT STOCKTON
116.9 FST
Chan 116

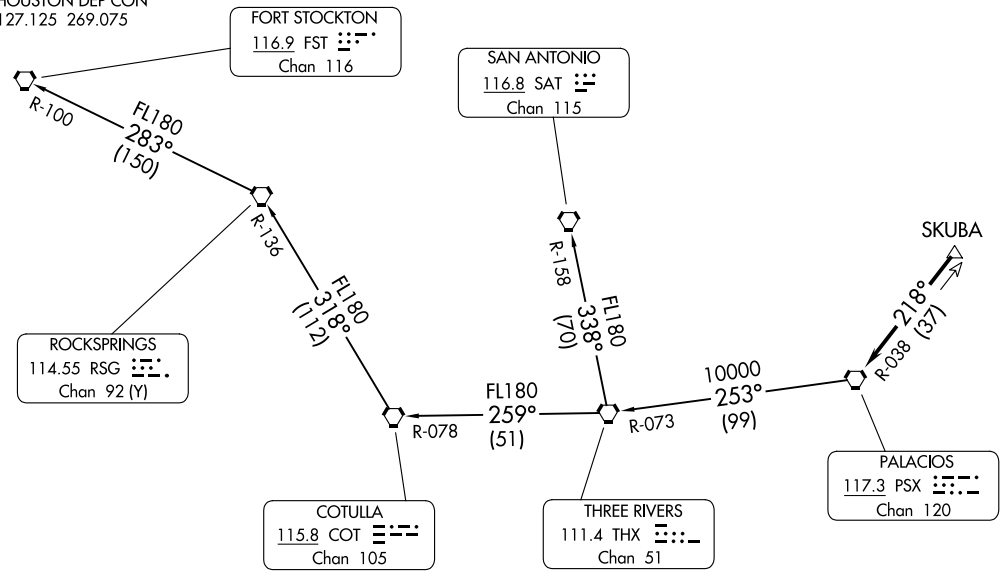
SAN ANTONIO
116.8 SAT
Chan 115

ROCKSPRINGS
114.55 RSG
Chan 92 (Y)

COTULLA
115.8 COT
Chan 105

THREE RIVERS
111.4 THX
Chan 51

PALACIOS
117.3 PSX
Chan 120



NOTE: Chart not to scale.

(CONTINUED ON FOLLOWING PAGE)

PALACIOS THREE DEPARTURE
(PSX3.PSX) 24137
03NOV22

HOUSTON, TEXAS
GEORGE BUSH INTCNL/HOUSTON (IAH)

(PSX3.PSX) 24137
PALACIOS THREE DEPARTURE
AL-5461 (FAA)

GEORGE BUSH INTCNL/HOUSTON (IAH)
HOUSTON, TEXAS

PALACIOS THREE DEPARTURE



DEPARTURE ROUTE DESCRIPTION

TAKEOFF ALL RUNWAYS: Climb on assigned heading for RADAR vectors to SKUBA, maintain 16000.

Expect filed altitude 10 minutes after departure, thence

. . . . on PSX R-038 to PSX VORTAC.

FORT STOCKTON TRANSITION (PSX3.FST): From over PSX VORTAC on PSX R-253 and THX R-073 to THX VORTAC, then on THX R-259 and COT R-078 to COT VORTAC, then on COT R-318 and RSG R-136 to RSG VORTAC, then on RSG R-283 and FST R-100 to FST VORTAC.

SAN ANTONIO TRANSITION (PSX3.SAT): From over PSX VORTAC on PSX R-253 and THX R-073 to THX VORTAC, then on SAT R-158 to SAT VORTAC.

SC-5, 03 OCT 2024 to 31 OCT 2024

SC-5, 03 OCT 2024 to 31 OCT 2024