

APP CRS	Rwy Idg	<b>10000</b>
<b>267°</b>	TDZE	<b>86</b>
	Apt Elev	<b>96</b>

# RNAV (RNP) Y RWY 27

GEORGE BUSH INTCNL/HOUSTON (IAH)

RNP AR APCH - GPS.

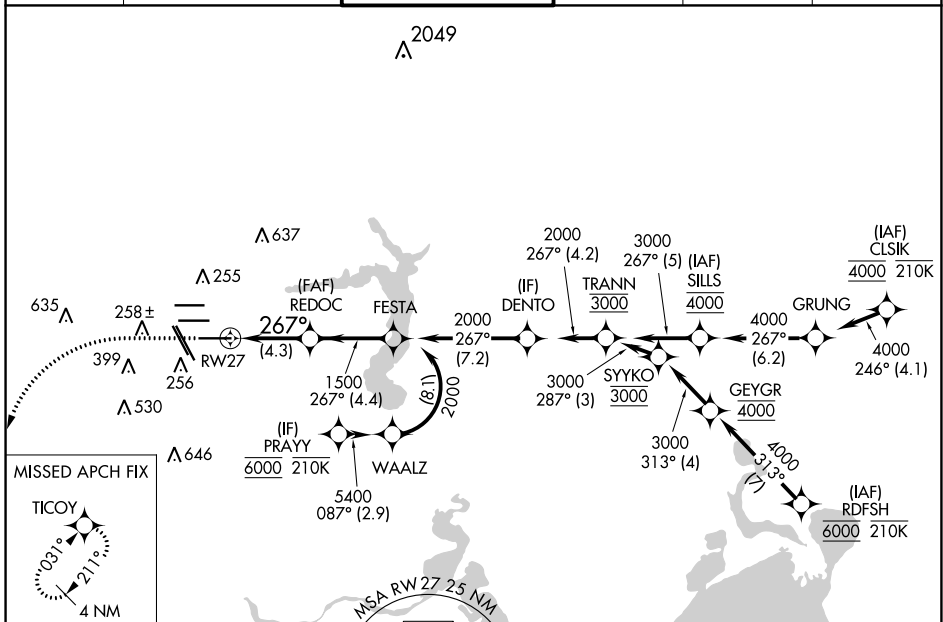
Simultaneous approach authorized. Use of FD or AP required during simultaneous operations. For uncompensated Baro-VNAV systems, procedure NA below -2°C or above 54°C. For inop ALS, increase RNP 0.30 all Cats visibility to RVR 4500.

ALSf-2

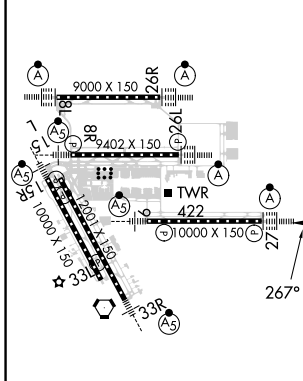


MISSED APPROACH: Climb to 560 then climbing left turn to 3000 direct TICOY and hold.

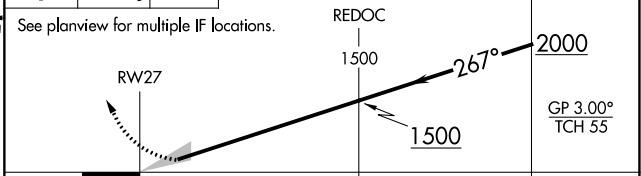
D-ATIS <b>124.05</b>	HOUSTON APP CON <b>120.05 379.1 EAST</b> <b>124.35 316.15 WEST</b>	HOUSTON TOWER <b>135.15 290.2</b>	GND CON <b>118.575</b>	CLNC DEL <b>128.1</b>	CPDLC
-------------------------	--	--------------------------------------	---------------------------	--------------------------	-------



ELEV 96	<b>D</b>	TDZE 86
---------	----------	---------



560 3000 TICOY  
 VGSI and RNAV glidepath not coincident (VGSI Angle 3.00/TCH 70).



CATEGORY	A	B	C	D
RNP 0.30 DA		380/24	294 (300-1/2)	

TDZ/CL Rwy 8L, 8R, 15R, 26R, 26L, 27 and 33L  
 HIRL all Rwy

## AUTHORIZATION REQUIRED

SC-5, 03 OCT 2024 to 31 OCT 2024

SC-5, 03 OCT 2024 to 31 OCT 2024