

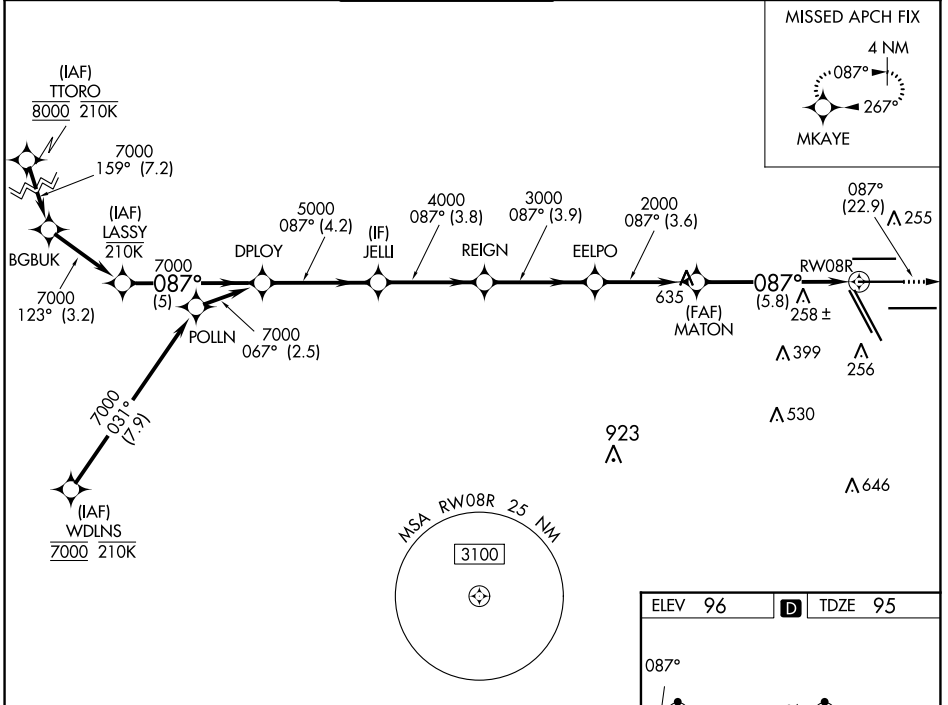
APP CRS	Rwy Idg	9402
087°	TDZE	95
	Apt Elev	96

RNAV (RNP) Y RWY 8R

GEORGE BUSH INTCNL/HOUSTON (IAH)

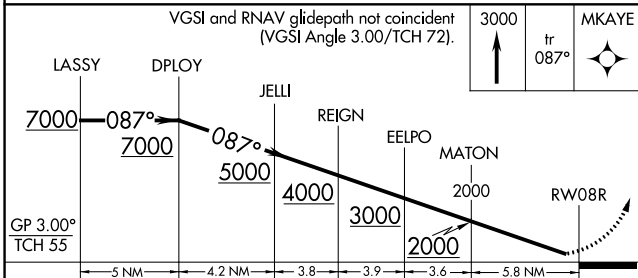
RNP AR APCH.		MALSR	MISSED APPROACH: Climb to 3000 on track 087° to MKAYE and hold.	
<p>For uncompensated Baro-VNAV systems, procedure NA below -3°C or above 54°C. For inop ALS increase RNP 0.13 all Cats visibility to RVR 4500, RNP 0.14 all Cats visibility to RVR 5600, RNP 0.30 all Cats visibility to 1¼ SM. Simultaneous approach authorized.</p>				

D-ATIS	HOUSTON APP CON	HOUSTON TOWER	GND CON	CLNC DEL	CPDLC
124.05	120.05 379.1 EAST 124.35 316.15 WEST	125.35 290.2	118.575	128.1	



SC-5, 03 OCT 2024 to 31 OCT 2024

SC-5, 03 OCT 2024 to 31 OCT 2024



ELEV 96	D TDZE 95
---------	------------------

Diagram showing taxiway dimensions:
 9000 X 150 26R
 2402 X 150
 26L
 1200 X 150
 1000 X 150
 33L
 33R
 TWR 422
 10000 X 150

TDZ/Cl Rwy 8R, 8L, 15R, 26R, 26L, 27 and 33L
 HIRL all Rwy's

CATEGORY	A	B	C	D
RNP 0.13 DA		383/40	288 (300-¾)	
RNP 0.14 DA		441/40	346 (400-¾)	
RNP 0.30 DA		492/45	397 (400-¾)	

AUTHORIZATION REQUIRED