


APP CRS	Rwy Idg	10000
087°	TDZE	91
	Apt Elev	96

RNAV (RNP) Y RWY 9

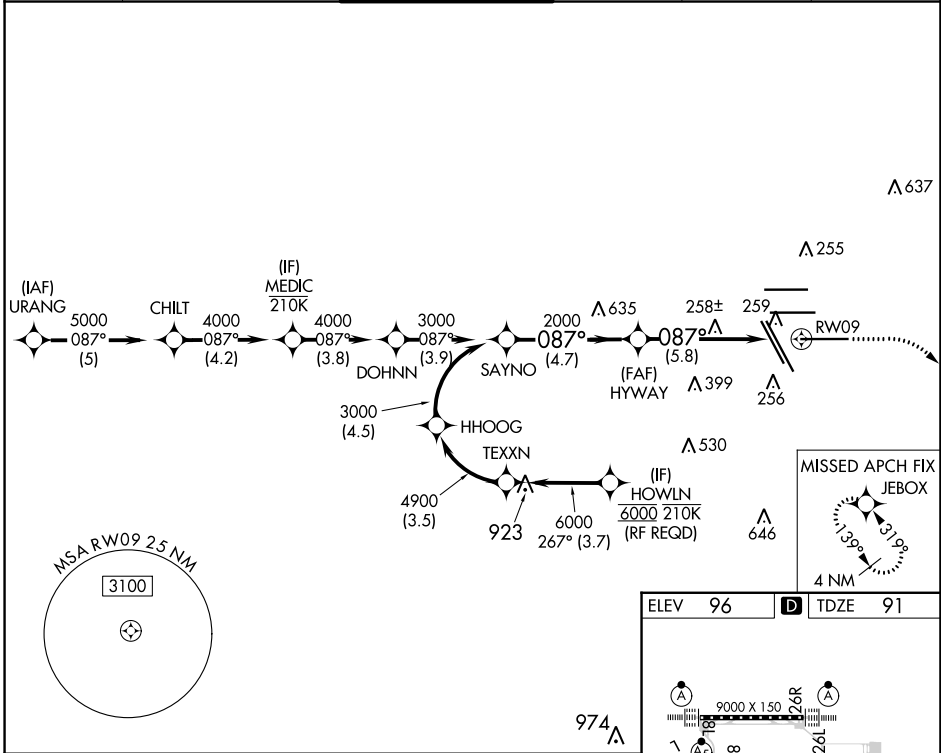
GEORGE BUSH INTCNL/HOUSTON (IAH)

▽ For uncompensated Baro-VNAV systems, procedure NA below -3°C (27°F) or above 54°C (130°F). GPS required. For inop MALS, increase all Cats visibility to 1 3/8 mile. Simultaneous approach authorized. Use of FD or AP providing RNAV track guidance required during simultaneous operations.

MALS 

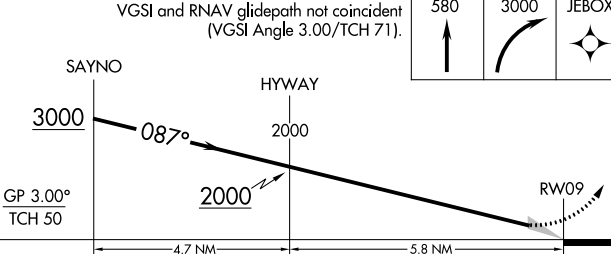
MISSED APPROACH: Climb to 580 then climbing right turn to 3000 direct JEBOX and hold.

D-ATIS	HOUSTON APP CON	HOUSTON TOWER	GND CON	CLNC DEL	CPDLC
124.05	120.05 379.1 EAST 124.35 316.15 WEST	135.15 290.2	118.575	128.1	



SC-5, 03 OCT 2024 to 31 OCT 2024

SC-5, 03 OCT 2024 to 31 OCT 2024

ELEV	96	D	TDZE	91
<p>VGSI and RNAV glidepath not coincident (VGSI Angle 3.00/TCH 71).</p> <p>580 3000 JEBOX</p> 				
CATEGORY	A	B	C	D
RNP 0.30 DA	51.6/49 425 (500-1)			
AUTHORIZATION REQUIRED				
<p>TDZ/CL Rwws 8R, 8L, 15R, 26R, 26L, 27 and 33L</p> <p>HIRL all Rwws</p> 