

WAAS CH 69626 W27A	APP CRS 267°	Rwy Idg 10000 TDZE 86 Apt Elev 96
--	------------------------	--

RNAV (GPS) Z RWY 27

GEORGE BUSH INTCNL/HOUSTON (IAH)

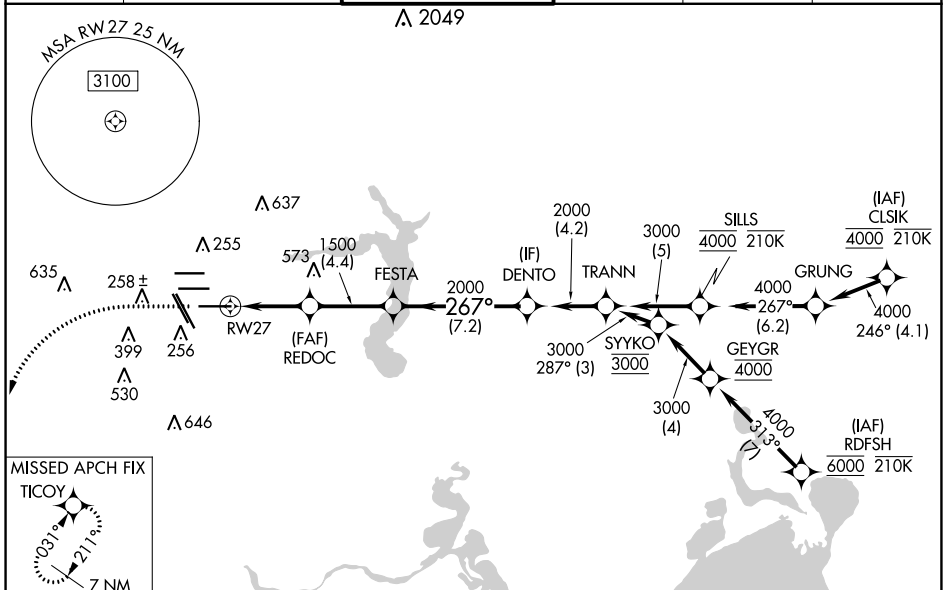
RNP APCH.

Simultaneous approach authorized. LNAV procedure NA during simultaneous operations. Use of FD or AP required during simultaneous operations. For uncompensated Baro-VNAV systems, LNAV/VNAV NA below -2°C or above 54°C. For inop ALS, increase LPV Cat E visibility to RVR 4000, LNAV/VNAV Cat E visibility to RVR 6000, and LNAV Cats C, D and E visibility to 1 $\frac{3}{8}$ SM.



MISSED APPROACH: Climb to 560 then climbing left turn to 3100 direct TICOOY and hold.

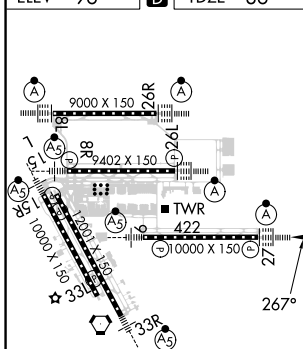
D-ATIS 124.05	HOUSTON APP CON 120.05 379.1 EAST 124.35 316.15 WEST	HOUSTON TOWER 135.15 290.2	GND CON 118.575	CLNC DEL 128.1	CPDLC
-------------------------	--	--------------------------------------	---------------------------	--------------------------	-------



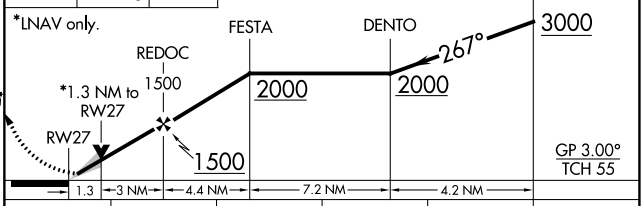
SC-5, 03 OCT 2024 to 31 OCT 2024

SC-5, 03 OCT 2024 to 31 OCT 2024

ELEV 96	D	TDZE 86
---------	----------	---------



560	3100	TICOOY	VGSI and RNAV glidepath not coincident (VGSI Angle 3.00/TCH 70).
-----	------	--------	--



CATEGORY	A	B	C	D	E
LPV DA	286/18 200 (200- $\frac{1}{2}$)				
LNAV/VNAV DA	476/35 390 (400- $\frac{5}{8}$)				
LNAV MDA	560/24	474 (500- $\frac{1}{2}$)	560/50		474 (500-1)