

WAAS CH 72926 W09A	APP CRS 087°	Rwy Idg 10000 TDZE 91 Apt Elev 96
--	------------------------	--

RNAV (GPS) Z RWY 9

GEORGE BUSH INTCNL/HOUSTON (IAH)

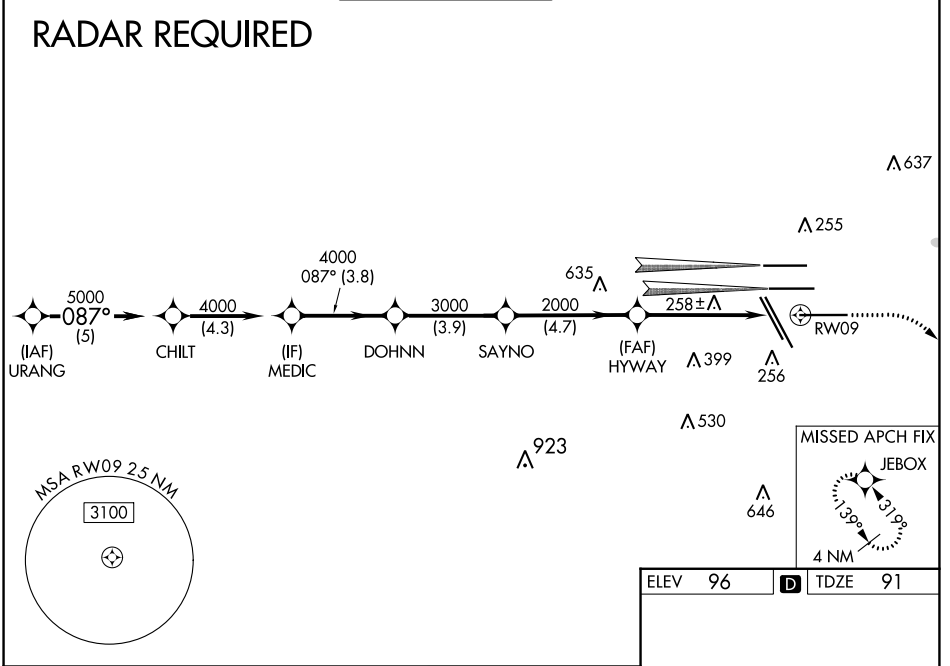
▼ For uncompensated Baro-VNAV systems, LNAV/VNAV NA below -3°C (27°F) or above 54°C (130°F). For inop MALSR, increase LPV Cat E visibility to RVR 4000, LNAV/VNAV Cat E visibility to 1½ mile, and LNAV Cat C/D/E visibility to 1¾ mile. Simultaneous approach authorized with Rwy 8L/R. DME/DME RNP-0.3 NA. LNAV procedure NA during simultaneous operations. Use of FD or AP providing RNAV track guidance required during simultaneous operations.
** RVR 1800 authorized with use of FD or AP or HUD to DA.

MALSR

MISSED APPROACH: Climb to 580 then climbing right turn to 3000 direct JEBOX and hold.

D-ATIS 124.05	HOUSTON APP CON 120.05 379.1 EAST 124.35 316.15 WEST	HOUSTON TOWER 135.15 290.2	GND CON 118.575	CLNC DEL 128.1	CPDLC
-------------------------	--	--------------------------------------	---------------------------	--------------------------	-------

RADAR REQUIRED



SC-5, 03 OCT 2024 to 31 OCT 2024

SC-5, 03 OCT 2024 to 31 OCT 2024

VGSI and RNAV glidepath not coincident (VGSI Angle 3.00/TCH 71).

URANG	CHILT	MEDIC	DOHNN	SAYNO	HYWAY	RWY 9
5000	5000	4000	4000	3000	2000	1000
GP 3.00°	087°					
TCH 50						
	5 NM	4.3 NM	3.8 NM	3.9 NM	4.7 NM	4.5 NM
CATEGORY	A	B	C	D	E	
LPV DA**		291/24	200 (200-½)			
LNAV/VNAV DA		525/50	434 (500-1)			
LNAV MDA	580/24	489 (500-½)	580/50	489 (500-1)		

*LNAV only.
*1.3 NM to RWY 9

ELEV 96	TDZE 91
---------	---------

TDZ/CL Rwy 8R, 8L, 15R, 26R, 26L, 27 and 33L
HIRL all Rwy