

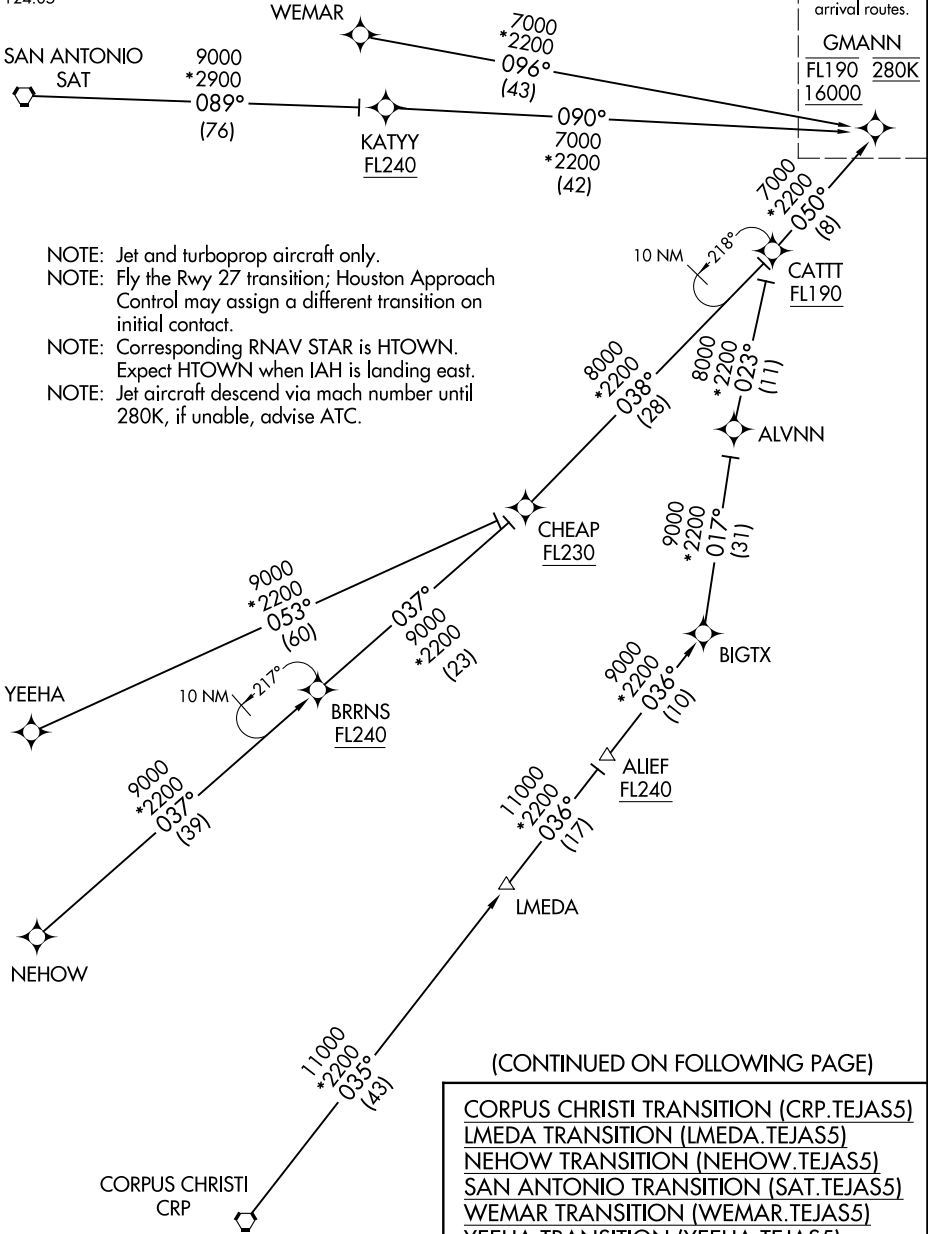
TEJAS FIVE ARRIVAL (RNAV) Transition Routes

HOUSTON APP CON  
119.175 291.675  
D-ATIS  
124.05

RNAV 1 - DME/DME/IRU or GPS.  
RADAR required.

See following page for arrival routes.

GMANN  
FL190 280K  
16000



- NOTE: Jet and turboprop aircraft only.
- NOTE: Fly the Rwy 27 transition; Houston Approach Control may assign a different transition on initial contact.
- NOTE: Corresponding RNAV STAR is HTOWN. Expect HTOWN when IAH is landing east.
- NOTE: Jet aircraft descend via mach number until 280K, if unable, advise ATC.

SC-5, 03 OCT 2024 to 31 OCT 2024

SC-5, 03 OCT 2024 to 31 OCT 2024

(CONTINUED ON FOLLOWING PAGE)

- CORPUS CHRISTI TRANSITION (CRP.TEJAS5)
- LMEDA TRANSITION (LMEDA.TEJAS5)
- NEHOW TRANSITION (NEHOW.TEJAS5)
- SAN ANTONIO TRANSITION (SAT.TEJAS5)
- WEMAR TRANSITION (WEMAR.TEJAS5)
- YEEHA TRANSITION (YEEHA.TEJAS5)

NOTE: Chart not to scale.

TEJAS FIVE ARRIVAL (RNAV) Transition Routes

ARRIVAL ROUTE DESCRIPTION

From GMANN on track 058° to cross CITTE at or below 16000, then on track 059° to cross TEJAS between 12000 and 14000 and at 250K.

LANDING RUNWAY 26L: From TEJAS on track 059° to cross RIDLR at or below 10000, then on track 059° to cross BEEEP at or below 8000, then on track 059° to cross HOWLN at 6000 and at 240K, then on track 087° to SMOCR, then on track 087° to cross PRAYY at 6000 and at 210K, then on track 087°. Expect RADAR vectors to final approach course.

LANDING RUNWAY 26R: From TEJAS on track 059° to cross RIDLR at or below 10000, then on track 059° to cross BEEEP at or below 8000, then on track 059° to cross HOWLN at 6000 and at 240K, then on track 034° to ZOEER, then on track 087° to cross SKLER at 6000 and at 210K, then on track 087°. Expect RADAR vectors to final approach course.

LANDING RUNWAY 27: From TEJAS on track 059° to cross RIDLR at or below 10000, then on track 059° to cross BEEEP at or below 8000, then on track 059° to cross HOWLN at 6000 and at 240K, then on track 087° to SHIVV, then on track 087° to SMOCR, then on track 087° to cross PRAYY at 6000 and at 210K, then on track 087°. Expect RADAR vectors to final approach course.

RNAV 1 - DME/DME/IRU or GPS.

RADAR required.

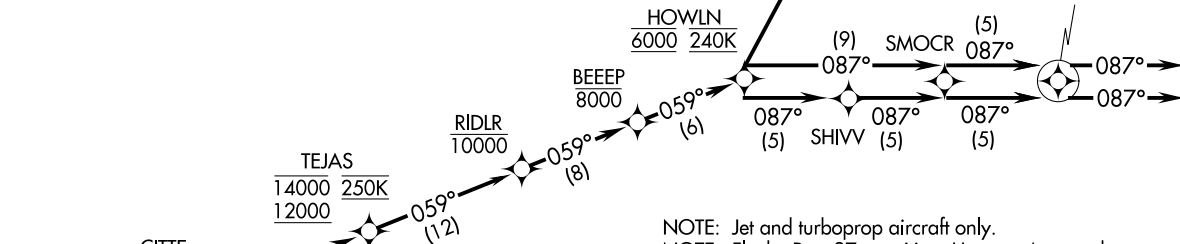
HOUSTON APP CON  
119.175 291.675  
D-ATIS  
124.05

TEJAS FIVE ARRIVAL (RNAV) Arrival Routes  
(GMANN, TEJAS5) 05OCT23

HOUSTON, TEXAS  
GEORGE BUSH INTL/NTL/HOUSTON (IAH)

(GMANN, TEJAS5) 23278  
TEJAS FIVE ARRIVAL (RNAV) Arrival Routes

AL-5461 (FAA)  
GEORGE BUSH INTL/NTL/HOUSTON (IAH)  
HOUSTON, TEXAS



- NOTE: Jet and turboprop aircraft only.
- NOTE: Fly the Rwy 27 transition; Houston Approach Control may assign a different transition on initial contact.
- NOTE: Corresponding RNAV STAR is HTOWN. Expect HTOWN when IAH is landing east.
- NOTE: Jet aircraft descend via mach number until 280K, if unable, advise ATC.

NOTE: Chart not to scale.