

| | | |
|--|------------------------|---|
| WAAS CH 90137 W16B | APP CRS 153° | Rwy Idg TDZE 3432 Apt Elev 3459 |
|--|------------------------|---|

RNAV (GPS) Y RWY 16

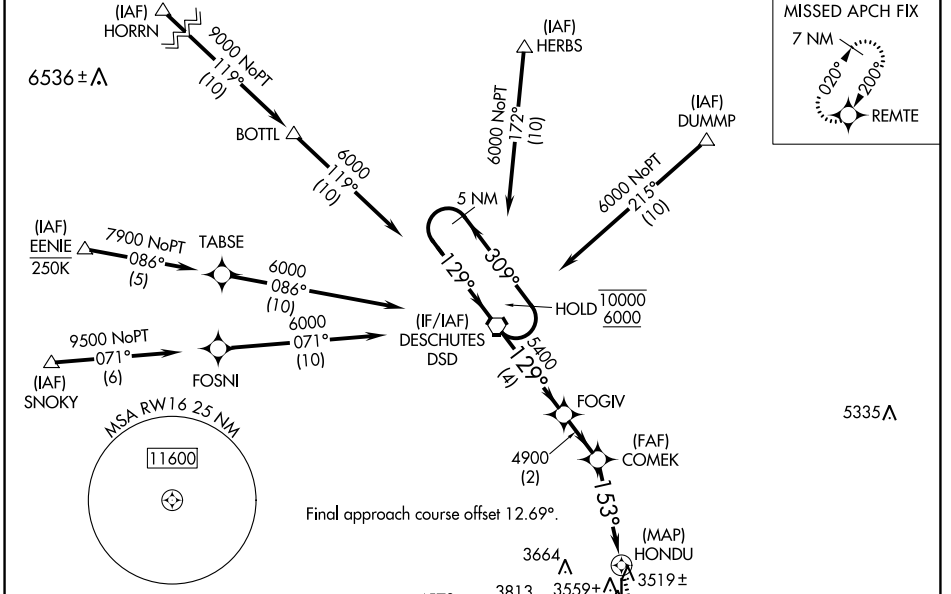
BEND MUNI (BDN)

RNP APCH - GPS.

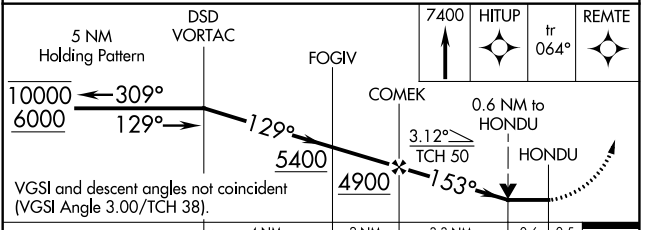
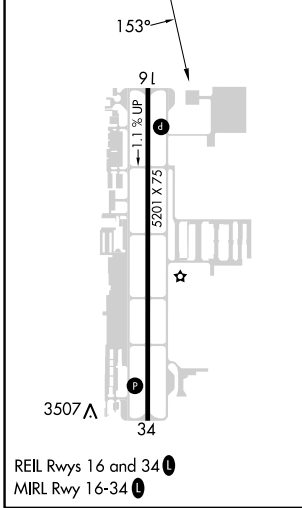
⚠ Rwy 16 helicopter visibility reduction below 3/4 SM NA. VDP NA when using Redmond altimeter setting. When local altimeter setting not received, use Redmond altimeter setting and increase all MDAs 100 feet and LP visibility Cats C and D 3/4 SM, LNAV visibility Cats C and D 1/2 SM, and Circling visibility Cat C 1/2 SM.

MISSED APPROACH: Climb to 7400 direct HITUP and on track 064° to REMTE and hold, continue climb-in-hold to 7400.

| | | |
|--------------------------|---|---------------------------------|
| AWOS-3 134.425 | SEATTLE CENTER 126.15 269.475 | UNICOM 123.0 (CTAF) 0 |
|--------------------------|---|---------------------------------|



| | |
|-----------|-----------|
| ELEV 3459 | TDZE 3432 |
|-----------|-----------|



| | | | | |
|-------------------|-----------------------|-----------------------|-------------------------------|-------------------------|
| CATEGORY | A | B | C | D |
| LP MDA | 3780-1 348 (400-1) | | | |
| LNAV MDA | 3820-1 | 388 (400-1) | 3820-1 1/8 | 388 (400-1 1/8) |
| C CIRCLING | 3960-1 501 (600-1) | 3980-1 521 (600-1) | 4120-1 3/4 661 (700-1 3/4) | 4640-3 1181 (1200-3) |

NW-1, 03 OCT 2024 to 31 OCT 2024

NW-1, 03 OCT 2024 to 31 OCT 2024