

WAAS CH 81906 W16A	APP CRS 166°	Rwy ldg TDZE Apt Elev	5201 3432 3459
--	------------------------	-----------------------------	---

RNAV (GPS) Z RWY 16

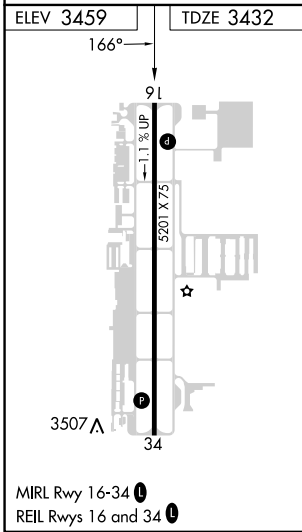
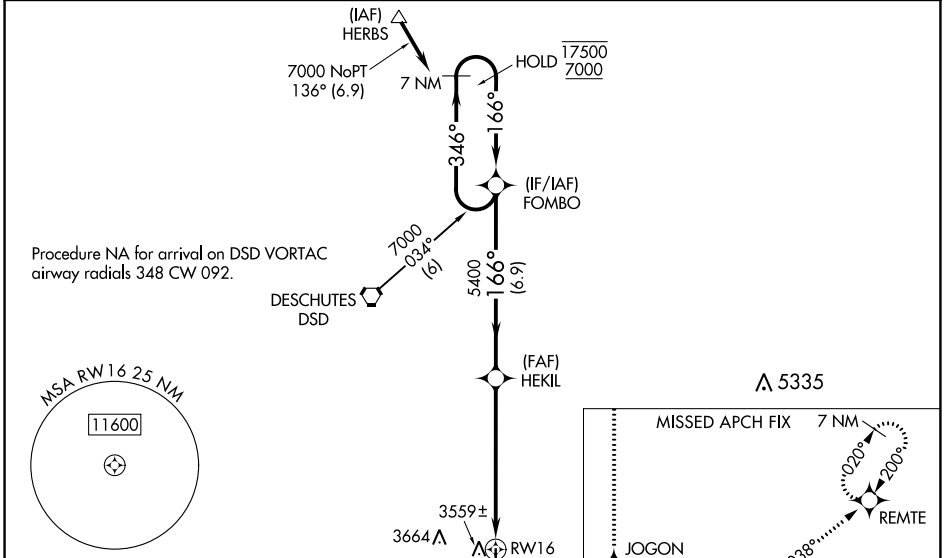
BEND MUNI (BDN)

RNP APCH - GPS.

⚠ Baro-VNAV and VDP NA when using Redmond altimeter setting. Rwy 16 helicopter visibility reduction below $\frac{3}{4}$ SM NA. For uncompensated Baro-VNAV systems, LNAV/VNAV NA below -21°C or above 54°C. When local altimeter setting not received, use Redmond altimeter setting: increase LPV DA to 3763 feet and all visibilities $\frac{1}{4}$ SM; increase LNAV/VNAV DA to 3821 feet and all visibilities $\frac{1}{4}$ SM; increase all MDAs 100 feet and LNAV visibility Cats C and D $\frac{1}{4}$ SM, and Circling visibility Cat C $\frac{1}{2}$ SM.

MISSED APPROACH: Climb to 7400 direct JOGON and on track 087° to MIKKO and on track 038° to REMTE and hold, continue climb-in-hold to 7400.

AWOS-3 134.425	SEATTLE CENTER 126.15 269.475	UNICOM 123.0 (CTAF)
--------------------------	---	-------------------------------



	4570	3813			
7400	JOGON	MIKKO	REMTE	VGSI and RNAV glidepath not coincident (VGSI Angle 3.00/TCH 38).	
	↑	tr 087°	tr 038°	FOMBO 7 NM Holding Pattern	
		HEKIL		346°	17500
		5400		166°	7000
					GP 3.00° TCH 50
				1.2 NM	4.9 NM
				6.9 NM	
CATEGORY	A	B	C	D	
LPV DA	3682- $\frac{3}{4}$		250 (300- $\frac{3}{4}$)		
LNAV/VNAV DA	3740- $\frac{7}{8}$		308 (300- $\frac{7}{8}$)		
LNAV MDA	3820-1		388 (400-1)		3820-1 $\frac{1}{8}$ 388 (400-1 $\frac{1}{8}$)
C CIRCLING	3960-1	3980-1	4120-1 $\frac{3}{4}$	4640-3	
	501 (600-1)	521 (600-1)	661 (700-1 $\frac{3}{4}$)	1181 (1200-3)	

NW-1, 03 OCT 2024 to 31 OCT 2024

NW-1, 03 OCT 2024 to 31 OCT 2024