

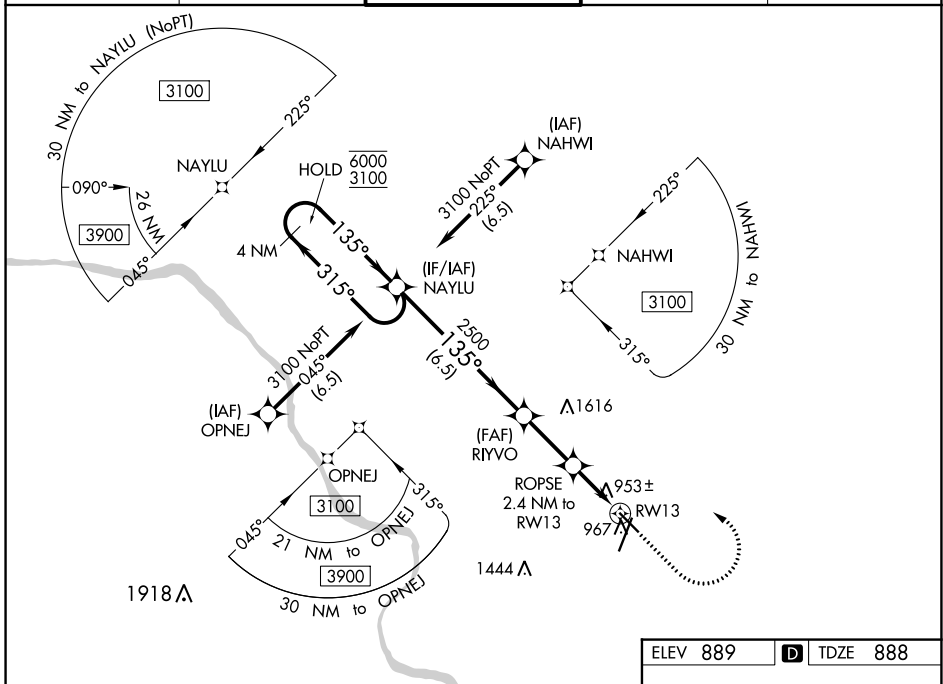
WAAS CH <b>40042</b> W13A	APP CRS <b>135°</b>	Rwy Idg TDZE Apt Elev	<b>5500</b> <b>888</b> <b>889</b>
---------------------------------	------------------------	-----------------------------	---

# RNAV (GPS) RWY 13

COLUMBIA RGNL (COU)

RNP APCH.	MISSED APPROACH: Climb to 2000 then climbing left turn to 3100 direct NAYLU and hold.
<p><b>▼</b> Circling NA for Cat D west of Rws 2 and 13. Circling Rwy 20 NA at night. For <b>▲</b> uncompensated Baro-VNAV systems, LNAV/VNAV NA below -17°C or above 54°C.</p>	

ATIS <b>128.45</b>	MIZZO APP CON <b>124.375 353.925</b>	COLUMBIA TOWER * <b>119.3 (CTAF) 363.25</b>	GND CON <b>121.6</b>	UNICOM <b>122.95</b>
-----------------------	---	--	-------------------------	-------------------------



NC-3, 03 OCT 2024 to 31 OCT 2024

NC-3, 03 OCT 2024 to 31 OCT 2024

4 NM Holding Pattern		NAYLU		RYVVO		2000 3100 NAYLU	
6000 ← 315°		3100 → 135°		2500		*LNAV only	
GP 3.00°		TCH 45		*1680		ROPSE 2.4 NM to RW13 *0.9 NM to RW13	
		← 6.5 NM		← 2.5 NM		← 1.5 NM	
						← 0.9 NM	
CATEGORY	A	B	C	D			
LPV DA		1139-1	251 (300-1)				
LNAV/VNAV DA		1139-1	251 (300-1)				
LNAV MDA		1220-1	332 (400-1)				
<b>C</b> CIRCLING	1300-1 411 (500-1)	1340-1 451 (500-1)	1360-1½ 471 (500-1½)	1440-2 551 (600-2)			

