


WAAS CH 77599 W02A	APP CRS 021°	Rwy Idg TDZE Apt Elev	7401 889 889
--	------------------------	-----------------------------	---

RNAV (GPS) RWY 2

COLUMBIA RGNL (COT)

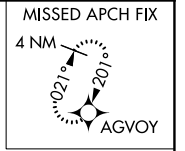
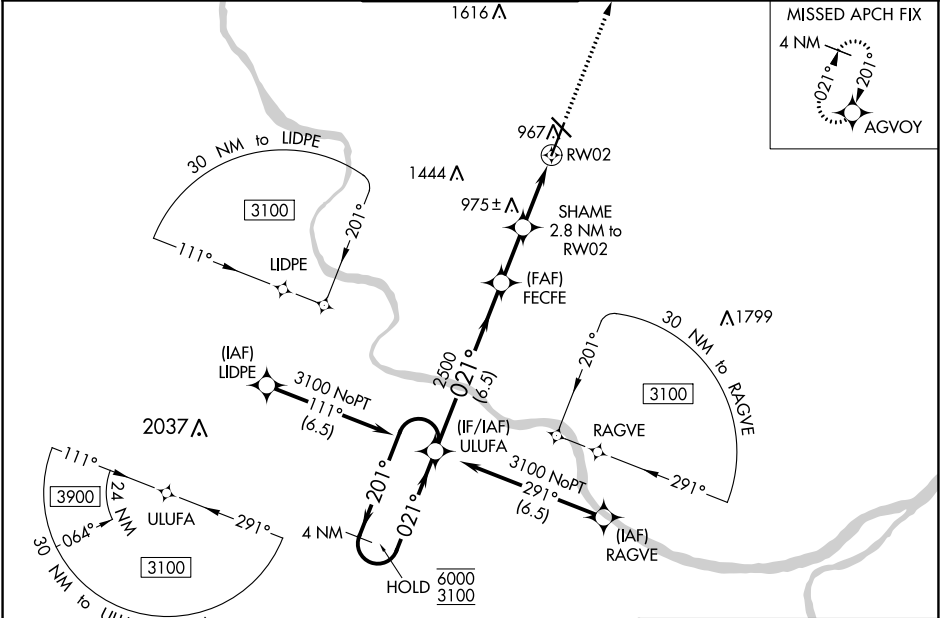
RNP APCH-GPS.

⚠ Circling NA for Cat D west of Rwy 2 and 13. For uncompensated Baro-VNAV systems, LNAV/VNAV NA below -16°C or above 54°C. For inop ALS, increase LNAV/VNAV all Cats visibility to RVR 4000 and increase LNAV Cat C/D visibility to RVR 5500.
*RVR 1800 authorized with the use of FD or AP or HUD to DA.

MALSR 

MISSED APPROACH: Climb to 3100 direct AGVOY and hold.

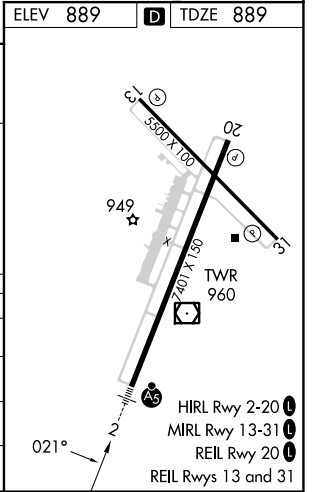
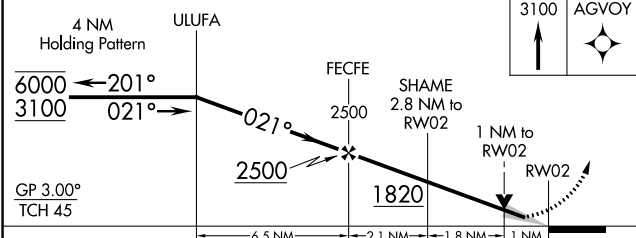
ATIS 128.45	MIZZU APP CON 124.375 353.925	COLUMBIA TOWER * 119.3 (CTAF) 363.25	GND CON 121.6	UNICOM 122.95
-----------------------	---	---	-------------------------	-------------------------



NC-3, 03 OCT 2024 to 31 OCT 2024

NC-3, 03 OCT 2024 to 31 OCT 2024

ELEV 889	D TDZE 889
----------	-------------------



CATEGORY	A	B	C	D
LPV DA*	1089/24		200 (200-½)	
LNAV/VNAV DA	1143/24		254 (300-½)	
LNAV MDA	1240/24	351 (400-½)	1240/30	351 (400-¾)
C CIRCLING	1280-1 391 (400-1)	1340-1 451 (500-1)	1360-1½ 471 (500-1½)	1440-2 551 (600-2)