

VOR/DME COU <b>110.2</b> Chan <b>39</b>	APP CRS <b>196°</b>	Rwy Idg <b>7401</b> TDZE <b>889</b> Apt Elev <b>889</b>
---	------------------------	---

# VOR Y RWY 20

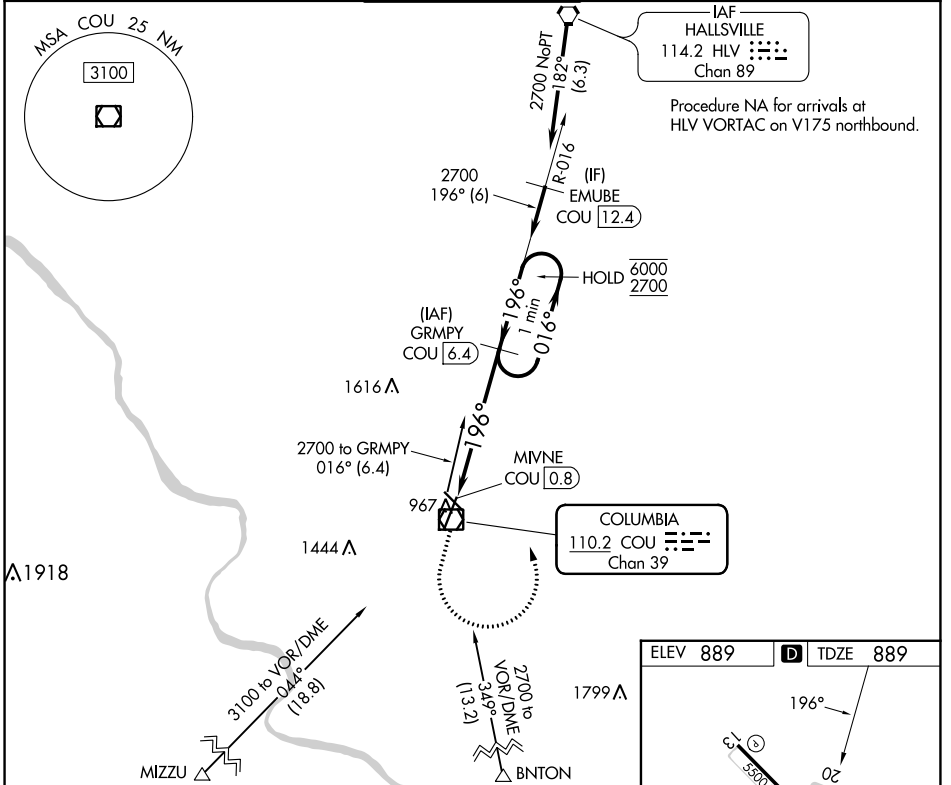
COLUMBIA RGNL (COU)

DME required.

**⚠** Circling NA for Cat D west of Rwy 2 and 13.

MISSED APPROACH: Climb to 1900 then climbing left turn to 2700 on COU VOR/DME R-016 to GRMPY/COU 6.4 DME and hold.

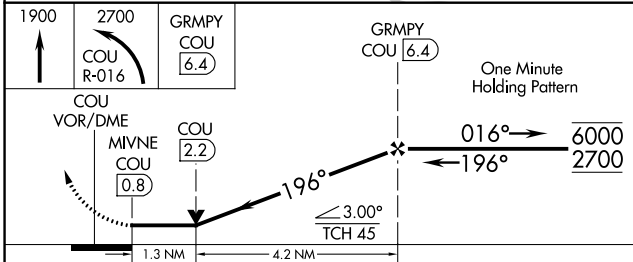
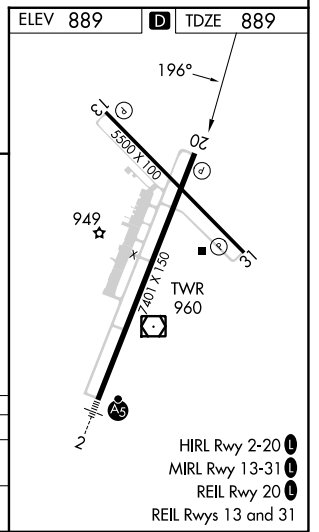
ATIS <b>128.45</b>	MIZU APP CON <b>124.375 353.925</b>	<b>COLUMBIA TOWER ★</b> <b>119.3 (CTAF) 363.25</b>	GND CON <b>121.6</b>	UNICOM <b>122.95</b>
-----------------------	--	---	-------------------------	-------------------------



IAF HALLSVILLE  
114.2 HLV  
Chan 89

Procedure NA for arrivals at HLV VORTAC on V175 northbound.

COLUMBIA  
110.2 COU  
Chan 39



CATEGORY	A	B	C	D
S-20	1360-1	471 (500-1)	1360-1 $\frac{3}{8}$	471 (500-1 $\frac{3}{8}$ )
<b>C</b> CIRCLING	1360-1	471 (500-1)	1360-1 $\frac{1}{2}$ 471 (500-1 $\frac{1}{2}$ )	1440-2 551 (600-2)

NC-3, 03 OCT 2024 to 31 OCT 2024

NC-3, 03 OCT 2024 to 31 OCT 2024

- HIRL Rwy 2-20 **Ⓛ**
- MIRL Rwy 13-31 **Ⓛ**
- REIL Rwy 20 **Ⓛ**
- REIL Rwy 13 and 31 **Ⓛ**