

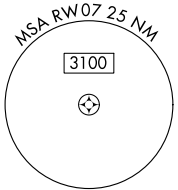
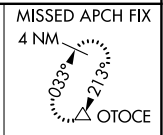
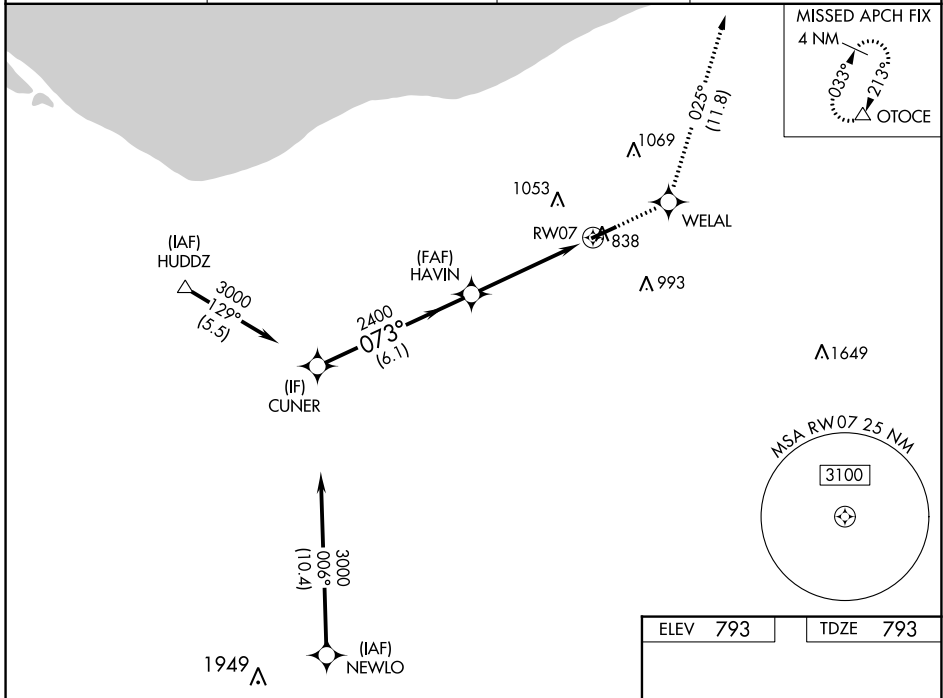
WAAS CH 99612 W07A	APP CRS 073°	Rwy Idg TDZE 793 Apt Elev 793	5002
--	------------------------	---	-------------

RNAV (GPS) RWY 7

LORAIN COUNTY RGNL (L.P.R.)

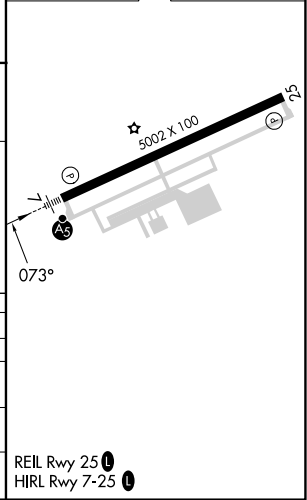
RNP APCH.		MALS R	MISSED APPROACH: Climb to 3000 direct WELAL and on track 025° to OTOCE and hold.
For uncompensated Baro-VNAV systems, LNAV/VNAV NA below -16°C (4°F) or above 54°C (130°F).			

ASOS 118.925	CLEVELAND APP CON 125.35 346.325	CLNC DEL 125.7	UNICOM 122.7 (CTAF)
------------------------	--	--------------------------	-------------------------------



ELEV 793	TDZE 793
----------	----------

CUNER	HAVIN	OTOCE		
3000	2400	tr 025°		
GP 3.00° TCH 54		*LNAV only		
6.1 NM	3.3 NM	1.5 NM		
073°	073°			
2400				
CATEGORY	A	B	C	D
LPV DA		993-½	200 (200-½)	
LNAV/VNAV DA		1133-¾	340 (400-¾)	
LNAV MDA	1340-½	547 (600-½)	1340-1⅛	547 (600-1⅛)
CIRCLING	1340-1 547 (600-1)	1360-1 567 (600-1)	1420-1¾ 627 (700-¾)	1420-2 627 (700-2)



EC-2, 03 OCT 2024 to 31 OCT 2024

EC-2, 03 OCT 2024 to 31 OCT 2024