

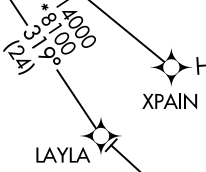
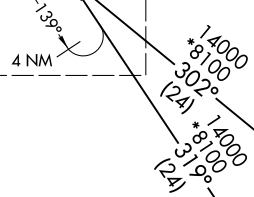
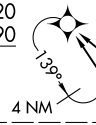
RNAV 1 - DME/DME/IRU or GPS.  
RADAR required.

- DENVER CENTER 133.4 377.175
- SPRINGS APP CON 124.0 257.875
- DENVER APP CON 128.45 251.075
- APA ATIS 120.3
- BJC ATIS 126.25
- CENTENNIAL TOWER 118.9
- METRO TOWER\* 118.6 233.7



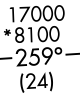
See following page for Arrival Routes

DUNNN  
FL220  
FL190



LAYLA

XPAIN



MORSN  
FL300



17000  
\*8100  
259°  
(24)



FRAAY

NOTE: Jet aircraft only.  
NOTE: Expect runway assignment from DENVER TRACON upon initial contact.

NOTE: Chart not to scale.

CAARS TRANSITION (CAARS.DUNNN5)  
FRAAY TRANSITION (FRAAY.DUNNN5)

(CONTINUED ON FOLLOWING PAGE)

DUNNN FIVE ARRIVAL (RNAV) Transition Routes  
(DUNNN.DUNNN5) 14JUL22

(DUNNN.DUNNN5) 22195  
DUNNN FIVE ARRIVAL (RNAV) Transition Routes  
AL-5715 (FAA)  
DENVER, COLORADO

(DUNNN.DUNNN5) 22195

AL-5715 (FAA)

# DUNNN FIVE ARRIVAL (RNAV) Arrival Routes

DENVER, COLORADO

ROCKY MOUNTAIN METRO

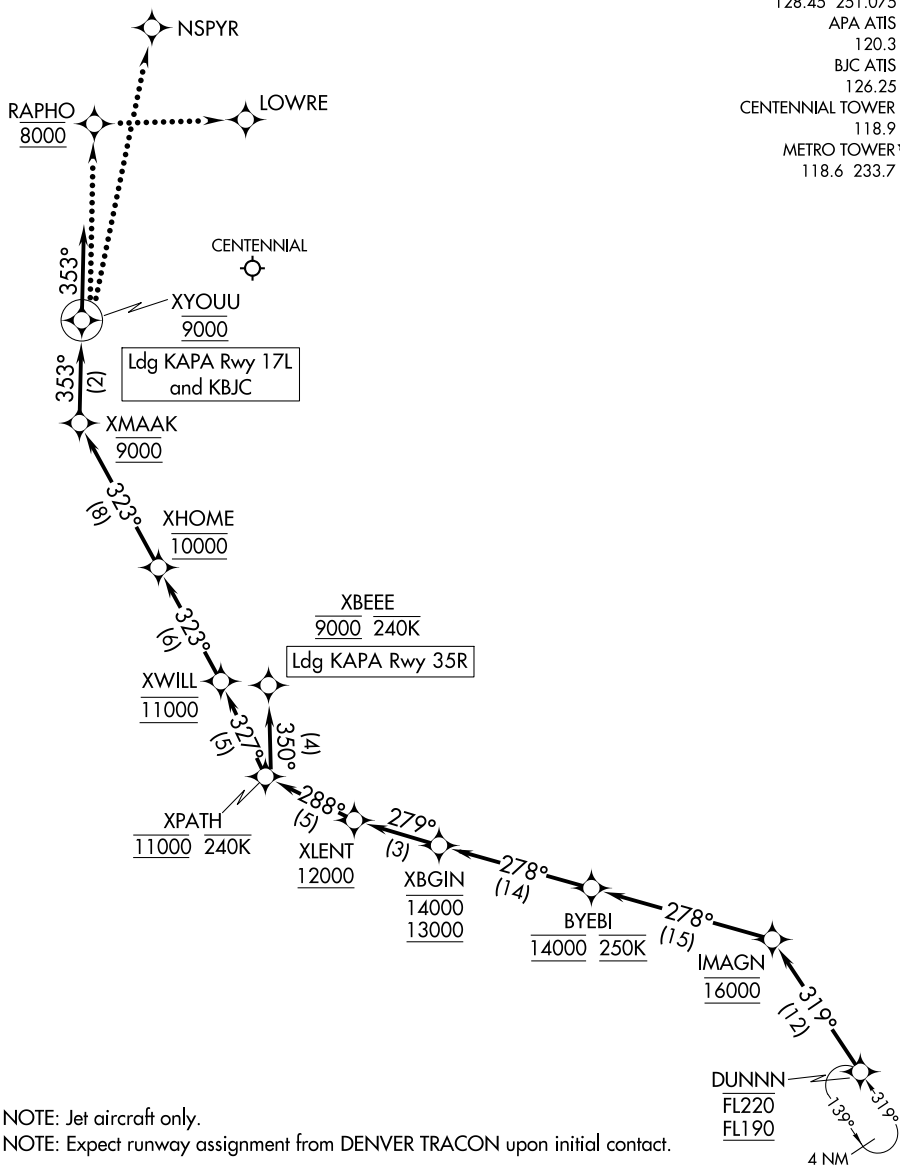
RNAV 1 - DME/DME/IRU or GPS.

RADAR required.

DENVER CENTER  
 133.4 377.175  
 SPRINGS APP CON  
 124.0 257.875  
 DENVER APP CON  
 128.45 251.075  
 APA ATIS  
 120.3  
 BJC ATIS  
 126.25  
 CENTENNIAL TOWER  
 118.9  
 METRO TOWER\*  
 118.6 233.7

SW-1, 03 OCT 2024 to 31 OCT 2024

SW-1, 03 OCT 2024 to 31 OCT 2024



NOTE: Jet aircraft only.

NOTE: Expect runway assignment from DENVER TRACON upon initial contact.

NOTE: Chart not to scale.

(NARRATIVE ON FOLLOWING PAGE)

# DUNNN FIVE ARRIVAL (RNAV) Arrival Routes

DENVER, COLORADO

(DUNNN.DUNNN5) 14JUL22

ARRIVAL ROUTE DESCRIPTION

KAPA: From DUNNN on track 319° to cross IMAGN at 16000, then on track 278° to cross BYEBI at 14000 and at 250K.

LANDING KAPA RUNWAY 17L: From BYEBI on track 278° to cross XBGIN between 13000 and 14000, then on track 279° to cross XLENT at or above 12000, then on track 288° to cross XPATH at 11000 and at or below 240K, then on track 327° to cross XWILL at 11000, then on track 323° to cross XHOME at 10000, then on track 323° to cross XMAAK at 9000, then on track 353° to cross XYOUU at 9000, then on track 353°. Expect RADAR vectors to final approach course.

LANDING KAPA RUNWAY 35R: From BYEBI on track 278° to cross XBGIN between 13000 and 14000, then on track 279° to cross XLENT at or above 12000, then on track 288° to cross XPATH at 11000 and at or below 240K, then on track 350° to cross XBEEE at 9000 and at or below 240K. Expect ILS or LOC RWY 35R approach or as assigned by ATC.

LANDING KBJC: From DUNNN on track 319° to cross IMAGN at 16000, then on track 278° to cross BYEBI at 14000 and at 250K, then on track 278° to cross XBGIN between 13000 and 14000, then on track 279° to cross XLENT at or above 12000, then on track 288° to cross XPATH at 11000 and at or below 240K, then on track 327° to cross XWILL at 11000, then on track 323° to cross XHOME at 10000, then on track 323° to cross XMAAK at 9000, then on track 353° to cross XYOUU at 9000, then on track 353°. Expect RADAR vectors to final approach course.

LOST COMMUNICATIONS

LANDING CENTENNIAL:

From over XYOUU- proceed direct to RAPHO and cross at 8000, then direct LOWRE and execute the RNAV (GPS) RWY 17L approach.

From over XBEEE- execute the RNAV (GPS) RWY 35R approach.

Non-GPS equipped aircraft- execute the ILS or LOC RWY 35R approach.

LANDING ROCKY MOUNTAIN METRO:

From over XYOUU- proceed to NSPYR execute the ILS or LOC RWY 30R approach.

SW-1, 03 OCT 2024 to 31 OCT 2024

SW-1, 03 OCT 2024 to 31 OCT 2024