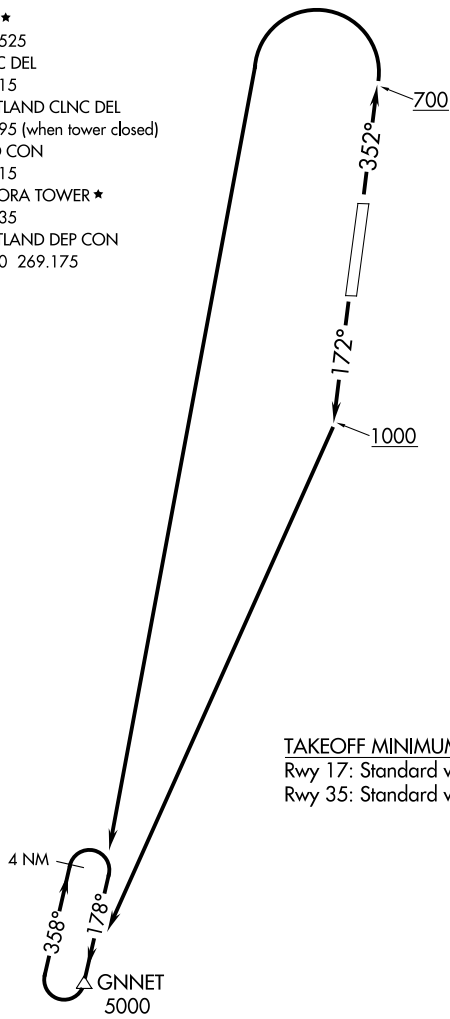


ATIS ★  
118.525  
CLNC DEL  
119.15  
PORTLAND CLNC DEL  
119.95 (when tower closed)  
GND CON  
119.15  
AURORA TOWER ★  
120.35  
PORTLAND DEP CON  
126.0 269.175

**TOP ALTITUDE:  
ASSIGNED BY ATC**

NOTE: RNAV 1  
NOTE: GPS required.



TAKEOFF MINIMUMS

Rwy 17: Standard with minimum climb of 375' per NM to 1000.  
Rwy 35: Standard with minimum climb of 350' per NM to 2100.

NOTE: Chart not to scale.

**DEPARTURE ROUTE DESCRIPTION**

TAKEOFF RUNWAY 17: Climb heading 172° to 1000, then climbing right turn direct GNNET.  
Thence . . . .

TAKEOFF RUNWAY 35: Climb heading 352° to 700, then climbing left turn direct GNNET.  
Thence . . . .

. . . . continue climb in GNNET holding pattern to cross GNNET at or above 5000 before proceeding on course.