

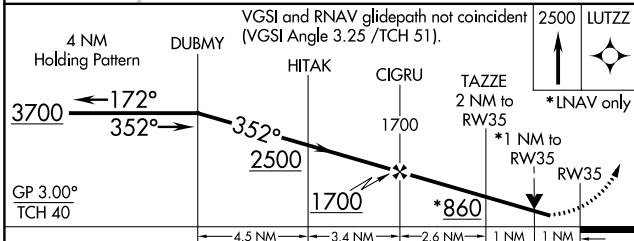
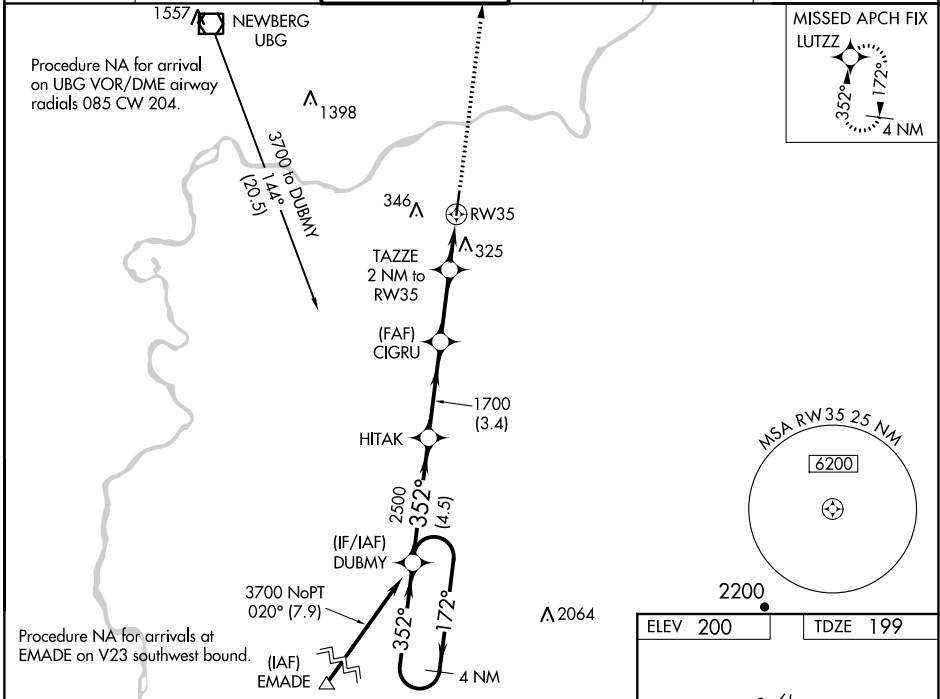
WAAS CH <b>77508</b> <b>W35A</b>	APP CRS <b>352°</b>	Rwy Idg <b>5003</b> TDZE <b>199</b> Apt Elev <b>200</b>
--	------------------------	---

# RNAV (GPS) RWY 35

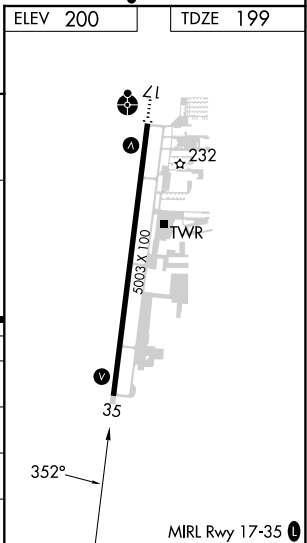
AURORA STATE (UAO)

RNP APCH.	MISSED APPROACH: Climb to 2500 direct LUTZZ and hold.
<p>▼ For uncompensated Baro-VNAV systems, LNAV/VNAV NA below -6°C or above 54°C. Rwy 35 helicopter visibility reduction below ¾ SM NA.</p>	

ATIS ★ <b>118.525</b>	PORTLAND APP CON <b>126.0 269.175</b>	AURORA TOWER ★ <b>120.35 (CTAF)</b>	GND CON <b>119.15</b>	CLNC DEL <b>119.15</b>	PORTLAND CLNC DEL <b>119.95</b> (When tower closed)
--------------------------	--	--	--------------------------	---------------------------	---



CATEGORY	A	B	C	D
LPV DA	453-7/8 254 (300-7/8)			
LNAV/VNAV DA	515-1 316 (400-1)			
LNAV MDA	620-1 421 (500-1)	620-1 1/4 421 (500-1 1/4)		
CIRCLING	700-1 500 (500-1)	700-1 1/2 500 (500-1 1/2)	940-2 1/4 740 (800-2 1/4)	



NW-1, 03 OCT 2024 to 31 OCT 2024

NW-1, 03 OCT 2024 to 31 OCT 2024