

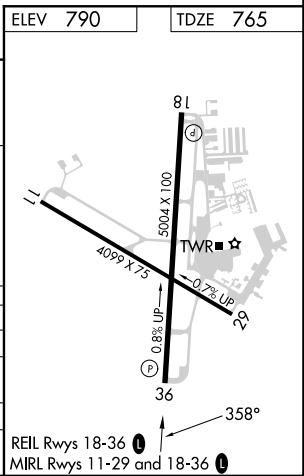
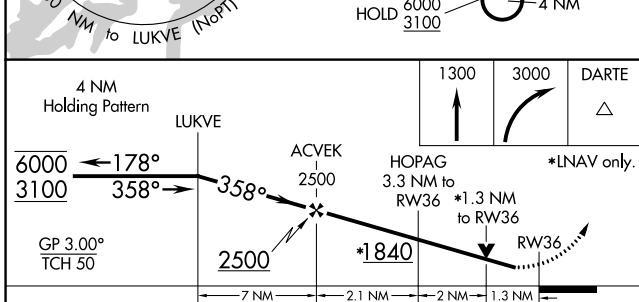
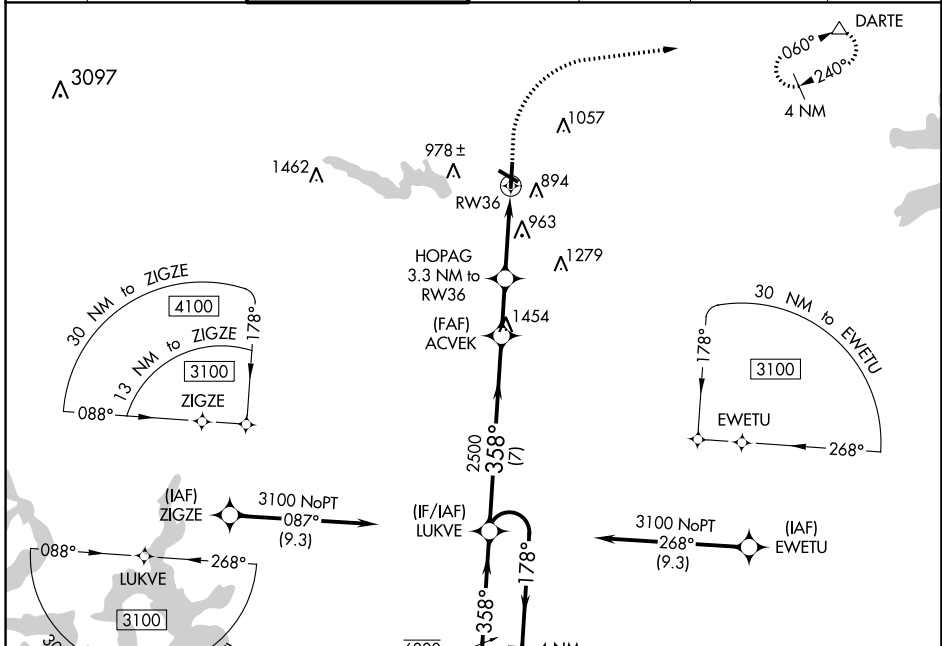
WAAS CH <b>72738</b> <b>W36A</b>	APP CRS <b>358°</b>	Rwy ldg TDZE Apt Elev	<b>5004</b> <b>765</b> <b>790</b>
--	------------------------	-----------------------------	---

# RNAV (GPS) RWY 36

GEORGETOWN EXEC (GTU)

RNP APCH.		<p>▼ Circling Rwy 29 NA at night. Rwy 36 helicopter visibility reduction below 3/4 SM NA.</p> <p>▲ For uncompensated Baro-VNAV systems, LNAV/VNAV NA below -16°C or above 54°C.</p>		<p>MISSED APPROACH: Climb to 1300 then climbing right turn to 3000 direct DARTE and hold.</p>	
-----------	--	---	--	---	--

ATIS <b>118.6</b>	AUSTIN APP CON <b>119.0 370.85</b>	GEORGETOWN TOWER * <b>120.225</b> (CTAF) <b>0</b>	GND CON <b>119.125</b>	CLNC DEL <b>119.125</b>	CLNC DEL <b>121.1</b> (when twr closed)	UNICOM <b>123.0</b>
----------------------	---------------------------------------	--	---------------------------	----------------------------	---	------------------------



CATEGORY	A	B	C	D
LPV DA	1015-1		250 (300-1)	
LNAV/VNAV DA	1242-1 3/8		477 (500-1 3/8)	
LNAV MDA	1220-1	455 (500-1)	1220-1 3/8	455 (500-1 3/8)
◻ CIRCLING	1240-1 450 (500-1)	1340-1 550 (600-1)	1360-1 1/2 570 (600-1 1/2)	1640-2 3/4 850 (900-2 3/4)

SC-3, 03 OCT 2024 to 31 OCT 2024

SC-3, 03 OCT 2024 to 31 OCT 2024