

| | | | |
|--|------------------------|-----------------------------|---|
| WAAS CH 99624 W05A | APP CRS 047° | Rwy Idg TDZE Apt Elev | 5501 132 133 |
|--|------------------------|-----------------------------|---|

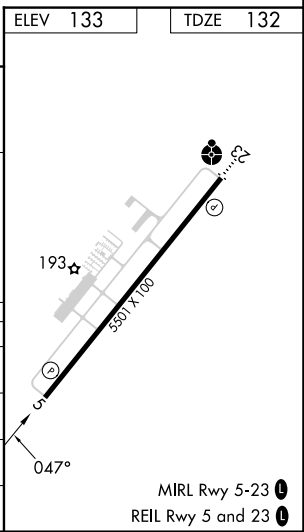
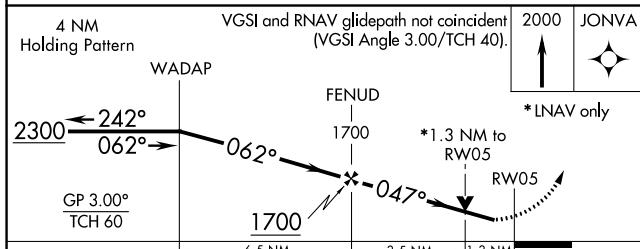
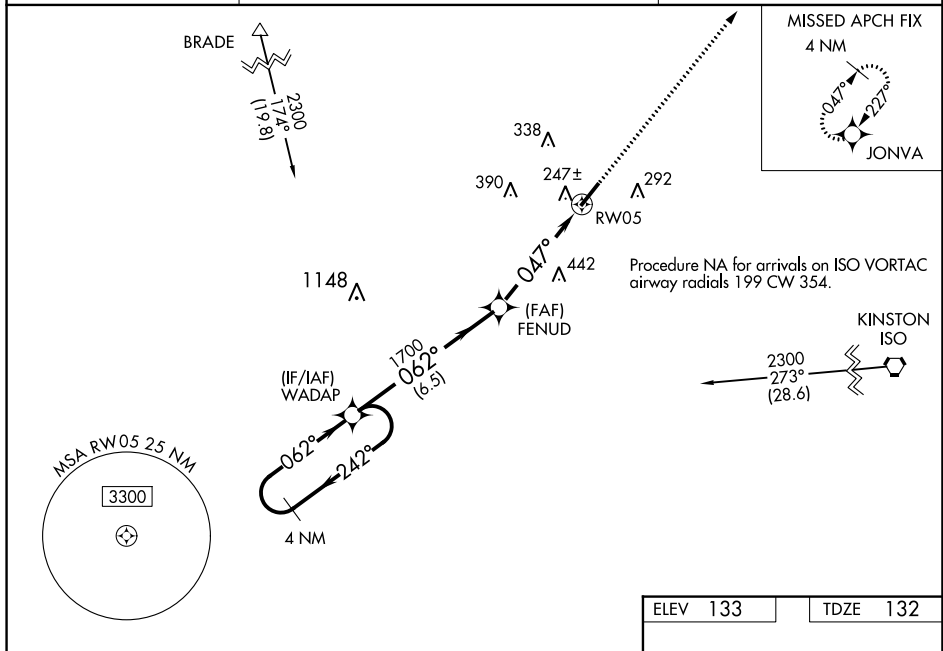
RNAV (GPS) RWY 5

WAYNE EXEC JETPORT (GWW)

⚠ Baro-VNAV NA when using Smithfield altimeter setting. For uncompensated Baro-VNAV systems, LNAV/VNAV NA below -15°C (5°F) or above 43°C (109°F). DME/DME RNP-0.3 NA.
⚠ Helicopter visibility reduction below ¼ SM NA. VDP NA with Smithfield altimeter setting.
 When local altimeter setting not received, use Smithfield altimeter setting and increase LPV DA to 490 feet, LNAV/VNAV DA to 462 and all MDA 60 feet, increase LPV and LNAV/VNAV all Cats visibility ½ SM, and Circling visibility Cat C/D ¼ SM.

MISSED APPROACH:
 Climb to 2000 direct JONVA and hold.

| | | |
|---------------------------|---|-----------------------------------|
| AWOS-3P 118.975 | SEYMOUR JOHNSON APP CON * 121.175 290.9 | UNICOM 122.975 (CTAF) 0 |
|---------------------------|---|-----------------------------------|



| CATEGORY | A | B | C | D |
|--------------|----------------------|----------------------|----------------------------|----------------------|
| LPV DA | | 436-1 | 304 (400-1) | |
| LNAV/VNAV DA | | 408-7/8 | 276 (300-7/8) | |
| LNAV MDA | 580-1 | 448 (500-1) | 580-13/8 | 448 (500-13/8) |
| CIRCLING | 580-1 447 (500-1) | 640-1 507 (600-1) | 760-13/4 627 (700-13/4) | 760-2 627 (700-2) |

SE-2, 03 OCT 2024 to 31 OCT 2024

SE-2, 03 OCT 2024 to 31 OCT 2024