

APP CRS	Rwy Idg	3498
025°	TDZE	641
	Apt Elev	641

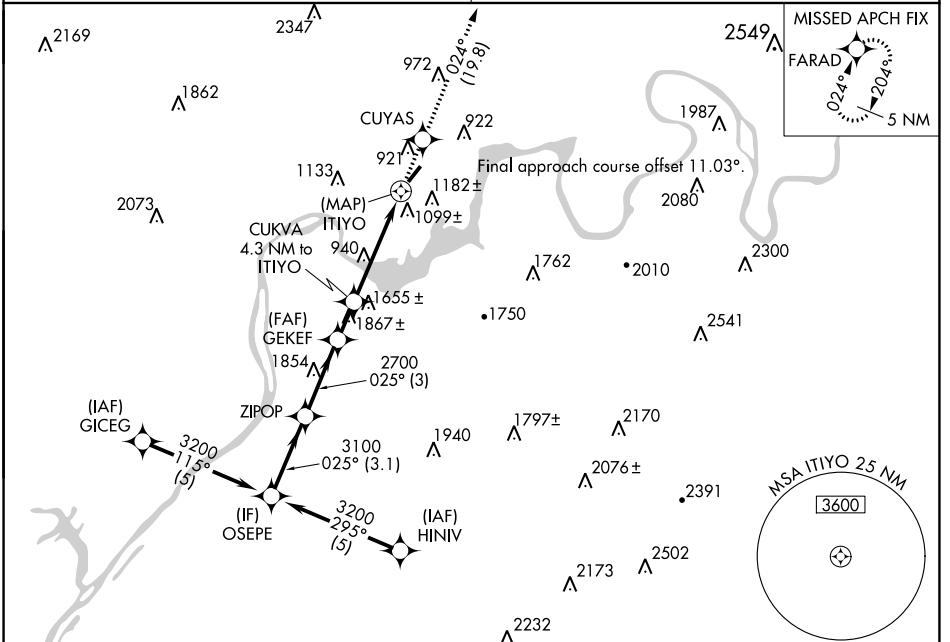
RNAV (GPS) RWY 4

MARION COUNTY/BROWN FLD (A/P)

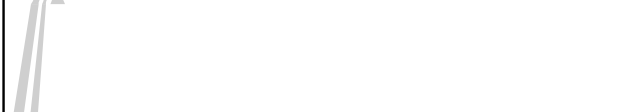
RNP APCH-GPS
 Procedure NA at night. Rwy 4 helicopter visibility reduction below 1 SM NA.
 Obtain local altimeter setting on CTAF; when not received, use Chattanooga altimeter setting and increase all MDAs 60 feet and LNAV Cat A visibility ¼ SM.

MISSED APPROACH: Climb to 4000 direct CUYAS and on track 024° to FARAD and hold.

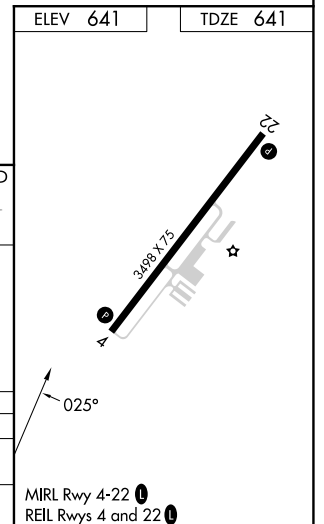
CHATTANOOGA APP CON * **119.2 323.075** UNICOM **122.8 (CTAF)**



ELEV	641	TDZE	641
------	-----	------	-----



CATEGORY	A	B	C	D
LNAV MDA	1500-1 859 (900-1)	1500-1¼ 859 (900-1¼)	1500-2½ 859 (900-2½)	NA
CIRCLING	1560-1¼ 919 (1000-1¼)	1840-1½ 1199 (1200-1½)	1860-3 1219 (1300-3)	NA



SE-1, 03 OCT 2024 to 31 OCT 2024

SE-1, 03 OCT 2024 to 31 OCT 2024