

WAAS CH <b>40418</b>	APP CRS <b>296°</b>	Rwy Idg TDZE Apt Elev	<b>4304</b> <b>867</b> <b>869</b>
<b>W29A</b>			

# RNAV (GPS) RWY 29

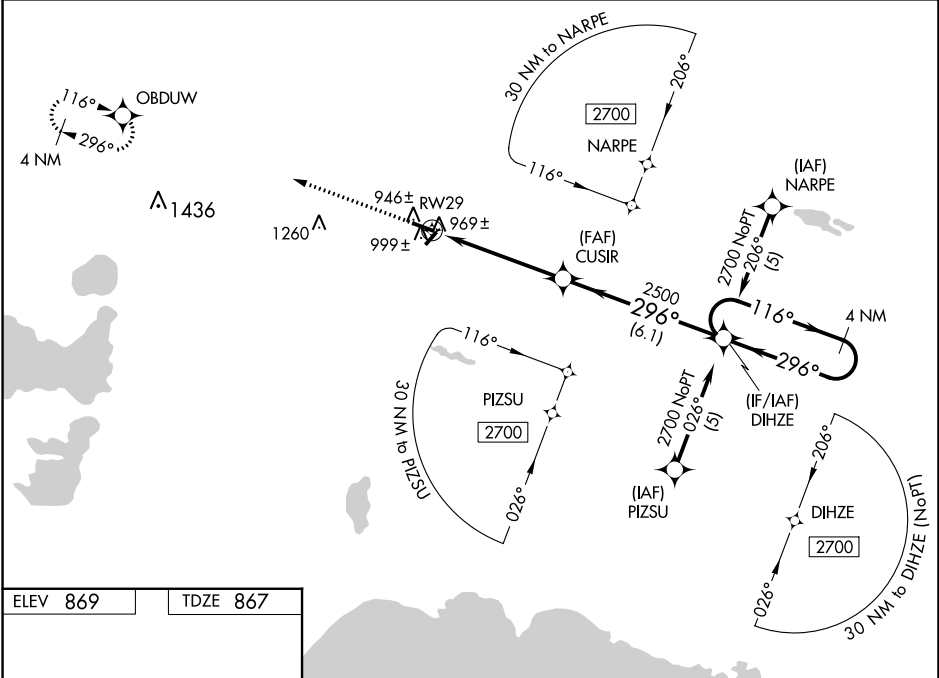
LUCE COUNTY (ERY)

RNP APCH - GPS.

⚠ For uncompensated Baro-VNAV systems, LNAV/VNAV NA below -16°C or above 47°C. When local altimeter setting not received, use Chippewa County Intl altimeter setting and increase LPV DA to 1222 feet; increase LNAV/VNAV DA to 1344 feet; increase all MDAs 120 feet and LNAV visibility Cat C 3/8 SM and Cat D 1/8 SM, and Circling visibility Cat C/D 1/2 SM. Baro-VNAV NA when using Chippewa County Intl altimeter setting. Circling NA to Rwy 4 and 22. Rwy 29 helicopter visibility reduction below 3/4 NA.

**MISSED APPROACH:**  
Climb to 2700 direct  
OBDDW and hold.

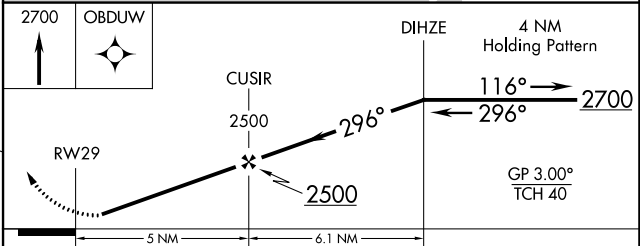
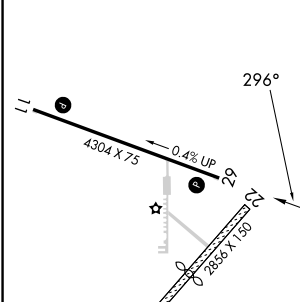
AWOS-3P <b>119.525</b>	MINNEAPOLIS CENTER <b>134.6 354.05</b>	UNICOM <b>122.8 (CTAF) 0</b>
---------------------------	---	---------------------------------



EC-1, 03 OCT 2024 to 31 OCT 2024

EC-1, 03 OCT 2024 to 31 OCT 2024

ELEV 869	TDZE 867
----------	----------



CATEGORY	A	B	C	D
LPV DA	1117-1		250 (300-1)	
LNAV/VNAV DA	1239-1½		372 (400-1½)	
LNAV MDA	1260-1		393 (400-1)	
CIRCLING	1300-1 431 (500-1)	1380-1 511 (600-1)	1460-1½ 591 (600-1½)	1560-2¼ 691 (700-2¼)

MIRL Rwy 11-29 0  
REIL Rwy 11 and 29 0  
NEWBERRY, MICHIGAN  
Orig-B 21MAR24

46°19'N - 85°27'W

# RNAV (GPS) RWY 29

LUCE COUNTY (ERY)