

VORTAC RQZ 112.2 Chan 59	APP CRS 010°	Rwy Idg 5500 TDZE 978 Apt Elev 984
--	------------------------	---

VOR/DME RWY 2

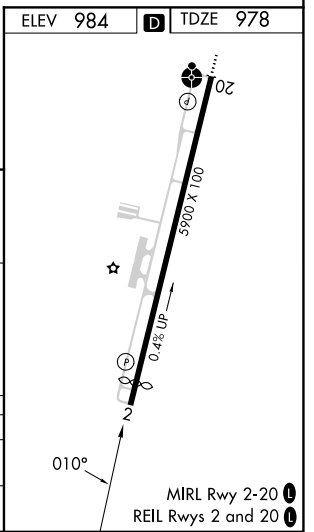
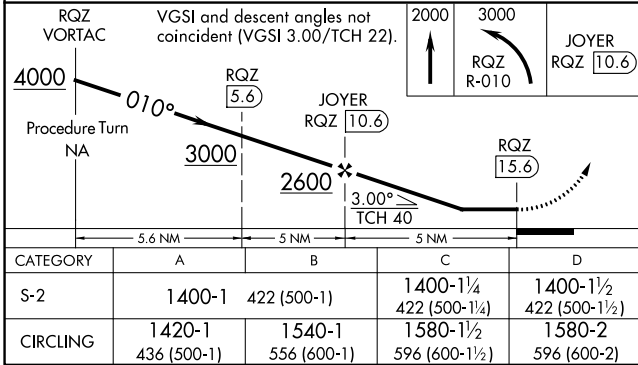
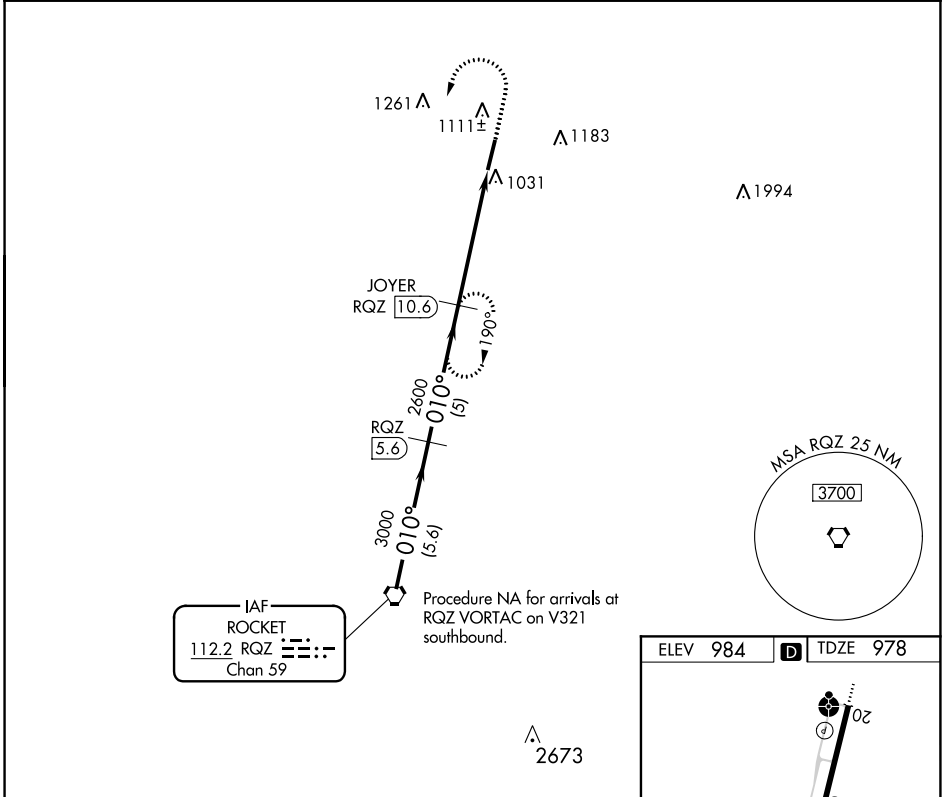
FAYETTEVILLE MUNI (FYM)

⚠ When local altimeter setting not received, use Huntsville Exec Tom Sharp Jr Fld altimeter setting and increase all MDA 120 feet; increase S-2 Cat C/D visibility ¼ SM, Circling Cat C visibility ½ SM, and Circling Cat D visibility ¼ SM. Rwy 2 helicopter visibility reduction below ¾ SM NA.

⚠ NA

MISSED APPROACH: Climb to 2000 then climbing left turn to 3000 via RQZ R-010 to JOYER INT and hold.

AWOS-3 135.275	HUNTSVILLE APP CON * 125.6 354.1	CLNC DEL (GCO) 121.725	UNICOM 122.8 (CTAF)
--------------------------	--	----------------------------------	-------------------------------



SE-1, 03 OCT 2024 to 31 OCT 2024

SE-1, 03 OCT 2024 to 31 OCT 2024