

MIAMI DEP CON
126.05 251.1
ATIS
120.55
GND CON
121.9
POMPANO BEACH TOWER *
125.4 (CTAF)

RNAV1 - DME/DME/IRU or GPS.
From SLIPT to MAXIM: RNAV 1- GPS.
From SLIPT to CANOA: RNAV 1- GPS.
RADAR required.

**TOP ALTITUDE:
ASSIGNED BY ATC**

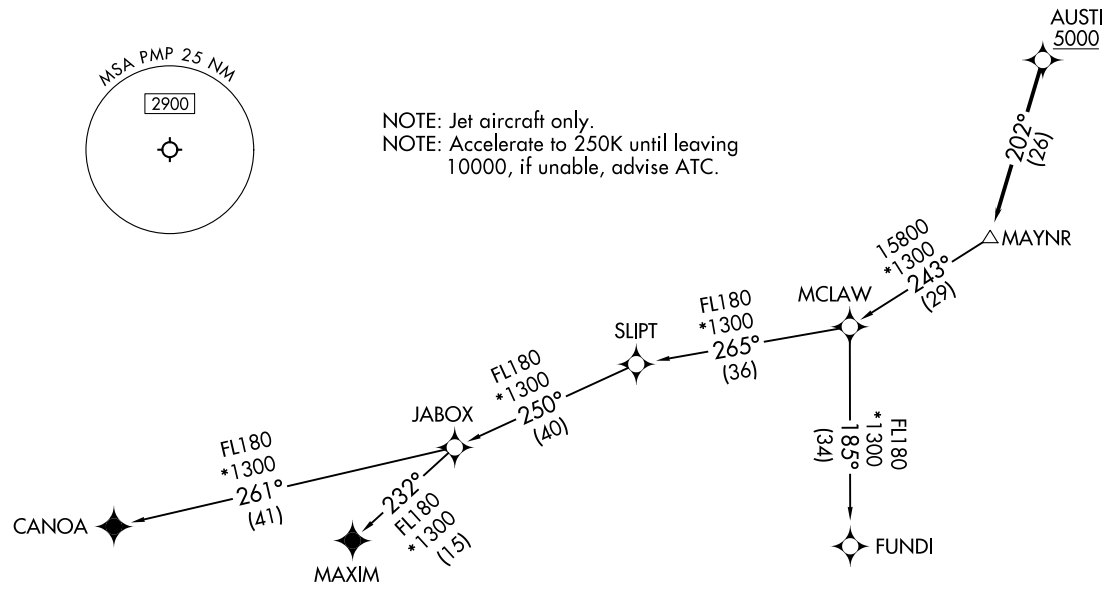
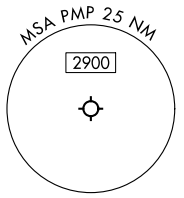


MAYNR TWO DEPARTURE (RNAV)
(MAYNR2.MAYNR) 21MAR24

(MAYNR2.MAYNR) 24081
MAYNR TWO DEPARTURE (RNAV)
AL-5972 (FAA)

TAKEOFF MINIMUMS
Rwys 6, 10, 15, 24, 28, 33: Standard with minimum climb of 500'/NM to 520.

NOTE: Jet aircraft only.
NOTE: Accelerate to 250K until leaving
10000, if unable, advise ATC.



POMPANO BEACH AIRPARK (PMP)
POMPANO BEACH AIRPARK (PMP)

POMPANO BEACH AIRPARK (PMP)
POMPANO BEACH AIRPARK (PMP)

NOTE: Chart not to scale.

(CONTINUED ON FOLLOWING PAGE)

MAYNR TWO DEPARTURE (RNAV)



DEPARTURE ROUTE DESCRIPTION

TAKEOFF RUNWAYS 6, 10, 15, 24, 28, 33: Climb on heading assigned by ATC for vectors to cross AUSTI at or above 5000, thence. . . .

. . . .on track 202° to MAYNR, then on assigned transition, maintain ATC assigned altitude. Expect clearance to filed altitude within 10 minutes after departure.

CANOA TRANSITION (MAYNR2.CANOA)

FUNDI TRANSITION (MAYNR2.FUNDI)

MAXIM TRANSITION (MAYNR2.MAXIM)

SE-3, 03 OCT 2024 to 31 OCT 2024

SE-3, 03 OCT 2024 to 31 OCT 2024