


WAAS CH 45818 W18A	APP CRS 180°	Rwy ldg TDZE Apt Elev	5001 44 46
--	------------------------	-----------------------------	---------------------------------------

RNAV (GPS) RWY 18

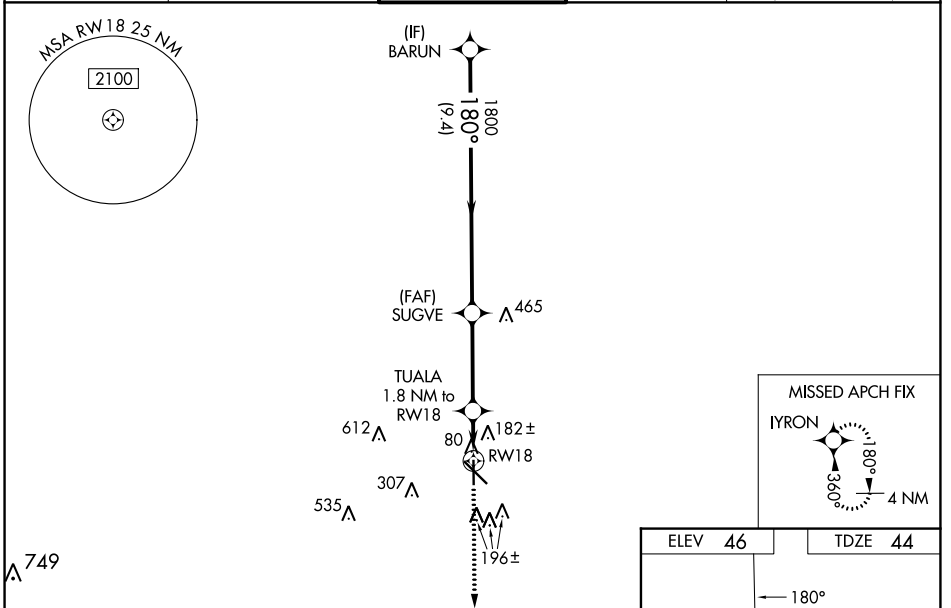
HAMMOND NORTHSHORE RGNL (HDC)

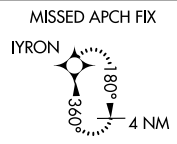
RNP APCH - GPS.

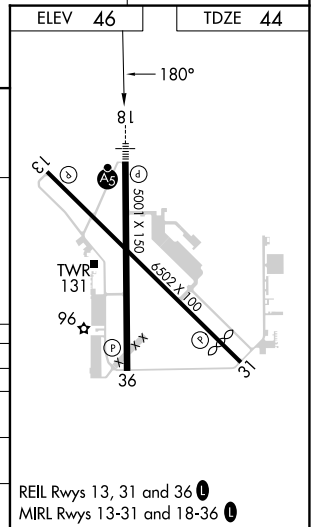
⚠ Baro-VNAV and VDP NA when using Louis Armstrong New Orleans Intl altimeter setting. For uncompensated Baro-VNAV systems, LNAV/VNAV NA below -15°C or above 54°C. When local altimeter setting not received, use Louis Armstrong New Orleans Intl altimeter setting and increase LPV DA to 339 feet; increase LNAV/VNAV DA to 555 feet and all visibilities ¼ SM. Increase all MDAs 100 feet and LNAV visibility Cat C/D ½ SM, and Circling visibility Cat C/D ½ SM. For inop ALS when using Louis Armstrong New Orleans Intl altimeter increase LPV all Cats visibility to ¾ SM; LNAV/VNAV all Cats visibility to 1¾ SM and LNAV Cats C/D visibility to 1¾ SM. For inop ALS increase LNAV/VNAV all Cats visibility to 1¼ SM and LNAV Cat C/D visibility to 1¼ SM.

MALSRL
 MISSED APPROACH: Climb to 2200 direct IYRON and hold.

ATIS 118.325	NEW ORLEANS APP CON 119.3 350.35	HAMMOND TOWER ★ 120.575 (CTAF) 0	GND CON 119.85	CLNC DEL 119.3 (When twr closed)
------------------------	--	---	--------------------------	---



BARUN 1800 GP 3.00° TCH 52 SUGVE 1800 TUALA 1.8 NM to RW18 660 RW18 1.1 NM to RW18 1.1 NM	2200		IYRON	
				
CATEGORY	A	B	C	D
LPV DA	250-½		206 (300-½)	
LNAV/VNAV DA	466-¾		422 (500-¾)	
LNAV MDA	460-½	416 (500-½)	460-¾	416 (500-¾)
CIRCLING	500-1	454 (500-1)	620-1½ 574 (600-1½)	920-2¾ 874 (900-2¾)



SC-4, 03 OCT 2024 to 31 OCT 2024

SC-4, 03 OCT 2024 to 31 OCT 2024