

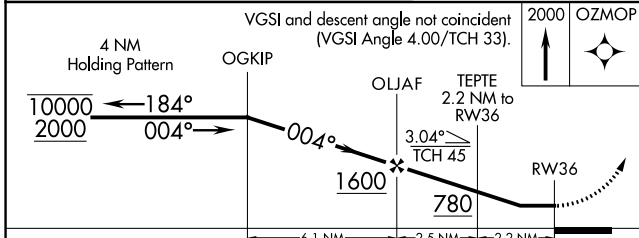
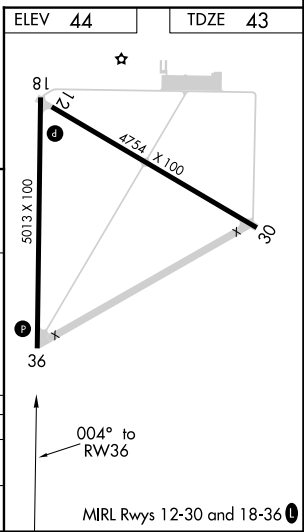
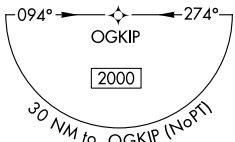
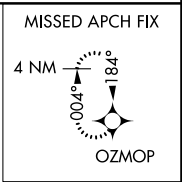
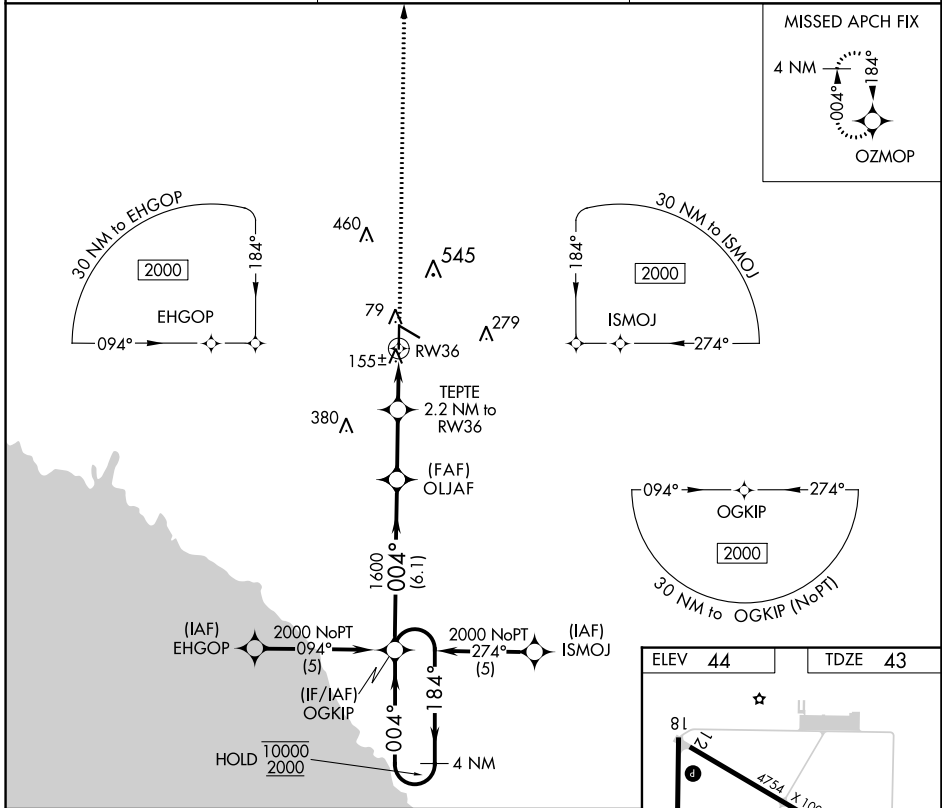
APP CRS	Rwy Idg	<b>5013</b>
<b>004°</b>	TDZE	<b>43</b>
	Apt Elev	<b>44</b>

# RNAV (GPS) RWY 36

PERRY-FOLEY (F'PY)

RNP APCH.	MISSED APPROACH: Climb to 2000 direct OZMOP and hold.
<p>▼ Circling Rwy 12 NA at night. Procedure NA at night.</p> <p>▲ Rwy 36 helicopter visibility reduction below 1 SM NA.</p>	

AWOS-3PT <b>118.375</b>	JACKSONVILLE CENTER <b>127.8 352.0</b>	UNICOM <b>122.8 (CTAF)</b>
----------------------------	---	-------------------------------



CATEGORY	A	B	C	D
LNVA MDA	460-1	417 (500-1)	460-1¼	417 (500-1¼)
CIRCLING	640-1	596 (600-1)	860-2½ 816 (900-2½)	860-2¾ 816 (900-2¾)

SE-3, 03 OCT 2024 to 31 OCT 2024

SE-3, 03 OCT 2024 to 31 OCT 2024