

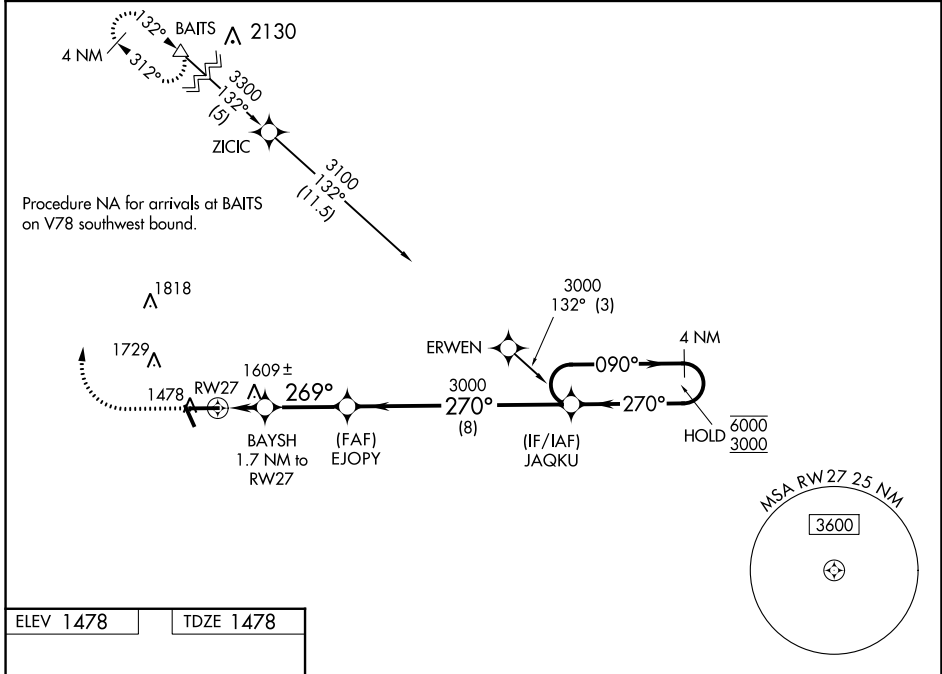
WAAS CH 66011 W27A	APP CRS 269°	Rwy Idg TDZE 1478 Apt Elev 1478	6000
--	------------------------	---	-------------

RNAV (GPS) RWY 27

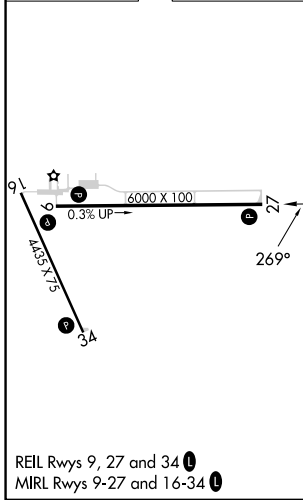
TAYLOR COUNTY (MDZ)

RNP APCH-GPS.	MISSED APPROACH: Climb to 2000 then climbing right turn to 3300 direct BAITS and hold.
⚠ For uncompensated Baro-VNAV systems, LNAV/VNAV NA below -17°C or above 54°C.	

AWOS-3 119.025	MINNEAPOLIS CENTER 124.4 317.7	UNICOM 122.8 (CTAF) 0
--------------------------	--	---------------------------------



ELEV 1478	TDZE 1478
-----------	-----------



	2000	3300	BAITS △	EJOPLY 3000	JAQKU	4 NM Holding Pattern	
				270°	090° → 6000 ← 270° 3000		
			BAYSH 1.7 NM to RW27	2060		GP 3.00° TCH 46	
			1.1 NM RW27 to RW27	0.7 NM	2.9 NM	8 NM	
CATEGORY	A		B		C		D
LPV DA			1678- ³ / ₄		200 (200- ³ / ₄)		
LNAV/VNAV DA			1877-1 ¹ / ₈		399 (400-1 ¹ / ₈)		
LNAV MDA	1860-1		382 (400-1)		1860-1 ¹ / ₈ 382 (400-1 ¹ / ₈)		
C CIRCLING	1900-1 422 (500-1)		2040-1 562 (600-1)		2040-1 ¹ / ₂ 562 (600-1 ¹ / ₂)		2180-2 ¹ / ₄ 702 (800-2 ¹ / ₄)

EC-3, 03 OCT 2024 to 31 OCT 2024

EC-3, 03 OCT 2024 to 31 OCT 2024