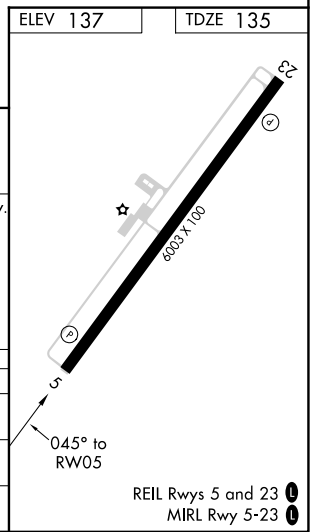
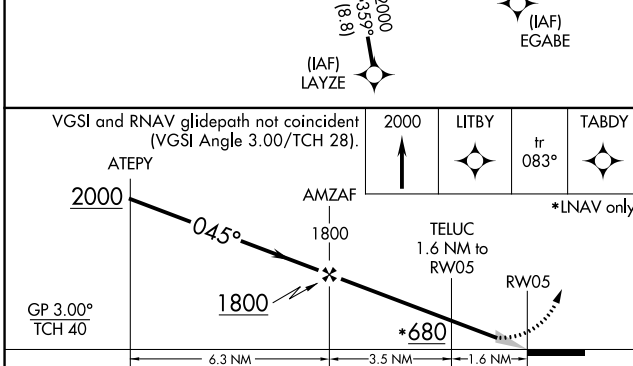
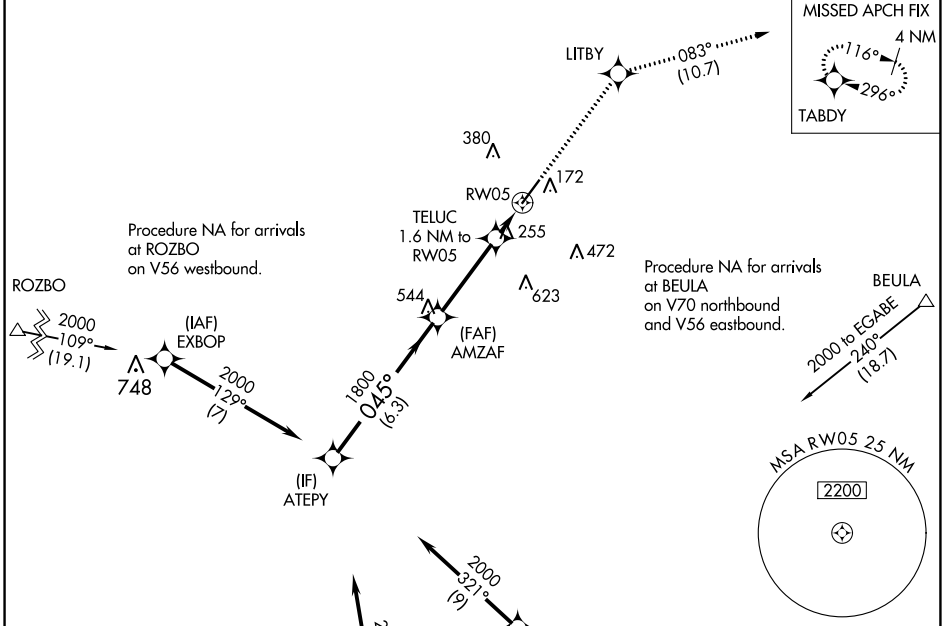


WAAS CH 63121 W05A	APP CRS 045°	Rwy Idg TDZE Apt Elev	6003 135 137
--	------------------------	-----------------------------	---

RNAV (GPS) RWY 5

DUPLIN COUNTY (DPL)

RNP APCH.		MISSED APPROACH: Climb to 2000 direct LITBY and on track 083° to TABDY and hold.	
AWOS-3 120.675	SEYMOUR JOHNSON APP CON* 119.7 273.6	UNICOM 123.0 (CTAF) 0	



CATEGORY	A	B	C	D
LPV DA		385-3/4	250 (300-3/4)	
LNAV/VNAV DA		396-7/8	261 (300-7/8)	
LNAV MDA	520-1	385 (400-1)	520-1 1/8	385 (400-1 1/8)

SE-2, 03 OCT 2024 to 31 OCT 2024

SE-2, 03 OCT 2024 to 31 OCT 2024