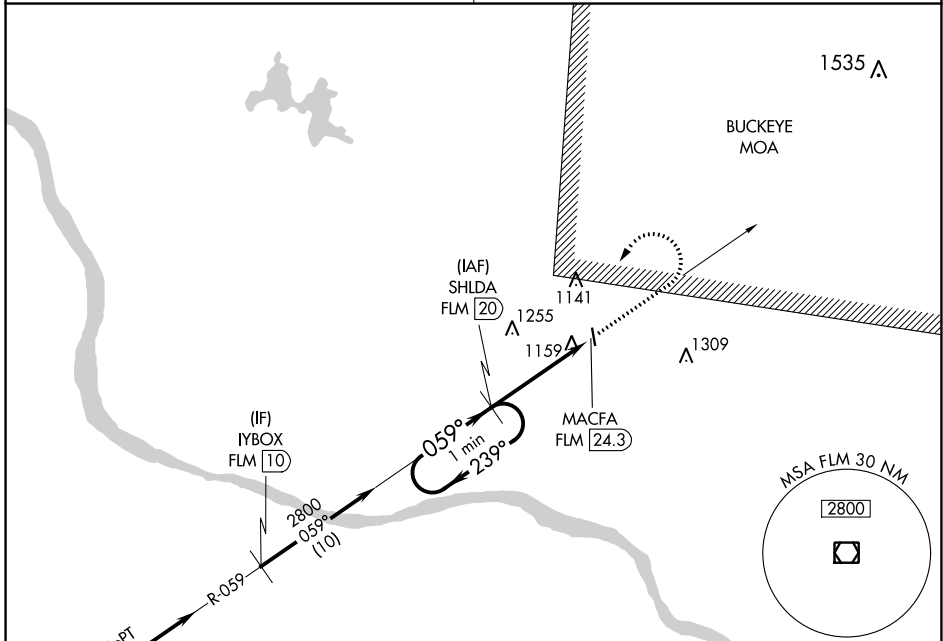


VOR/DME FLM 117.0 Chan 117	APP CRS 059°	Rwy Idg TDZE Apt Elev	N/A N/A 958
--	------------------------	-----------------------------	--

VOR/DME-A
BROWN COUNTY (GEO)

▼ Use Cincinnati/Northern Kentucky Intl, KY altimeter setting. Procedure NA at night. Helicopter visibility reduction below 1 SM NA.
▲ NA MISSED APPROACH: Climb to 2800 then left turn via FLM VOR/DME R-059 to SHLDA 20 DME and hold.

INDIANAPOLIS CENTER **135,575 290.5** CTAF **122.9**

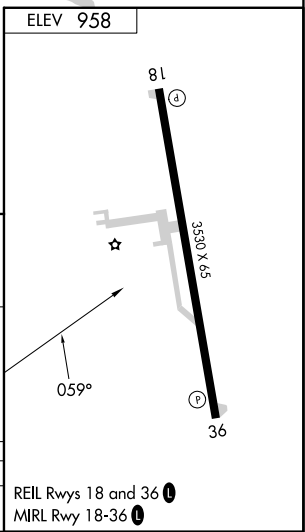
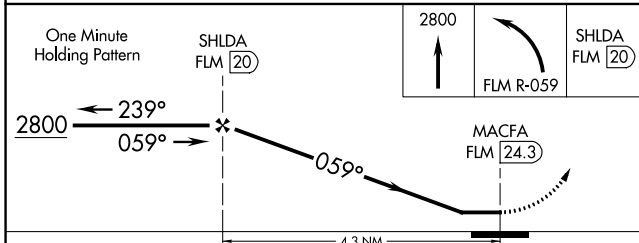


EC-2, 03 OCT 2024 to 31 OCT 2024

EC-2, 03 OCT 2024 to 31 OCT 2024

IAF FALMOUTH
117.0 FLM
Chan 117

Procedure NA for arrival at FLM VOR/DME on V44 westbound and V478 northwestbound.



CATEGORY	A	B	C	D
CIRCLING	1700-1 742 (800-1)	1700-1¼ 742 (800-1¼)	1700-2¼ 742 (800-2¼)	NA

REIL Rwy 18 and 36 **1**
MIRL Rwy 18-36 **1**