

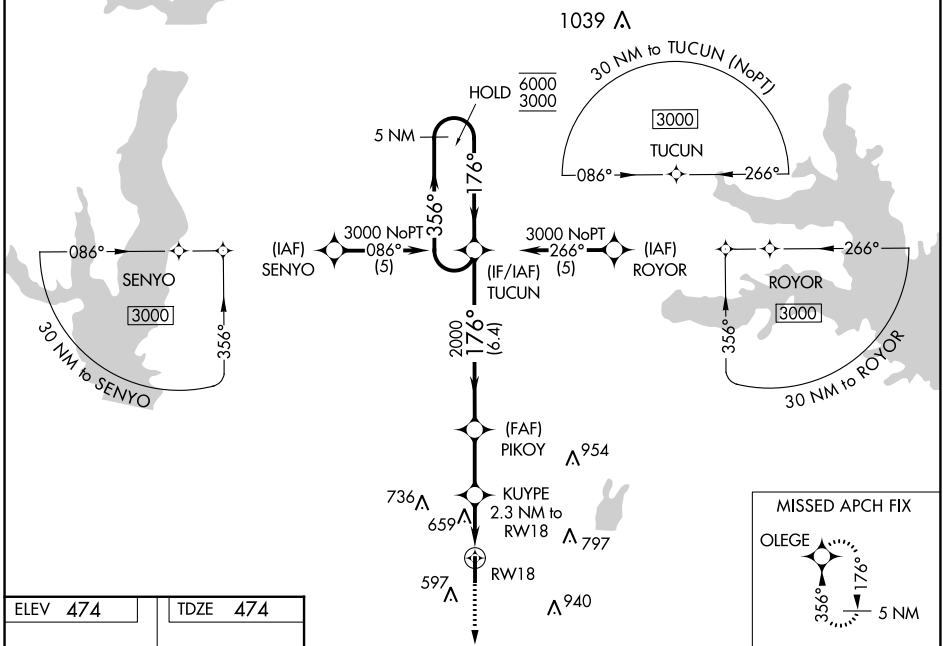
WAAS CH 77699 W18A	APP CRS 176°	Rwy Idg 5006 TDZE 474 Apt Elev 474
--	------------------------	---

RNAV (GPS) RWY 18

TERRELL MUNI (TRL)

RNP APCH - GPS.	<p>MISSED APPROACH: Climb to 3000 direct OLEGE and hold.</p>
<p>⚠ Rwy 18 helicopter visibility reduction below 3/4 SM NA. For uncompensated Baro-VNAV systems, LNAV/VNAV NA below -7°C or above 54°C.</p>	

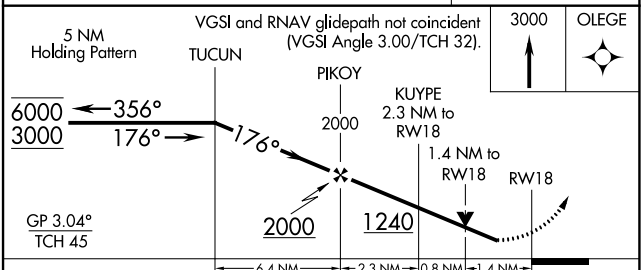
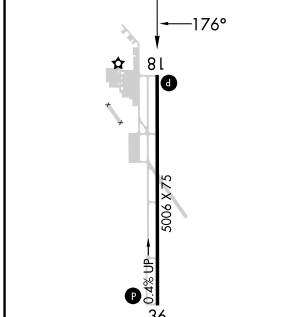
ASOS 119.275	FORT WORTH CENTER 132.025 360.75	UNICOM 123.075 (CTAF) 📻
------------------------	--	--



SC-2, 03 OCT 2024 to 31 OCT 2024

SC-2, 03 OCT 2024 to 31 OCT 2024

ELEV 474	TDZE 474
-----------------	-----------------



CATEGORY	A	B	C	D
LPV DA	756-7/8 282 (300-7/8)			NA
LNAV/VNAV DA	1013-1 1/2 539 (600-1 1/2)			NA
LNAV MDA	960-1	486 (500-1)	960-1 3/8 486 (500-1 3/8)	NA
C CIRCLING	1000-1 526 (600-1)	1020-1 546 (600-1)	1100-1 3/4 626 (700-1 3/4)	NA

RLS Rwy 18 **📻**
 REIL Rws 18 and 36
 MIRL Rws 18-36 **📻**