

CLARKSVILLE, TENNESSEE

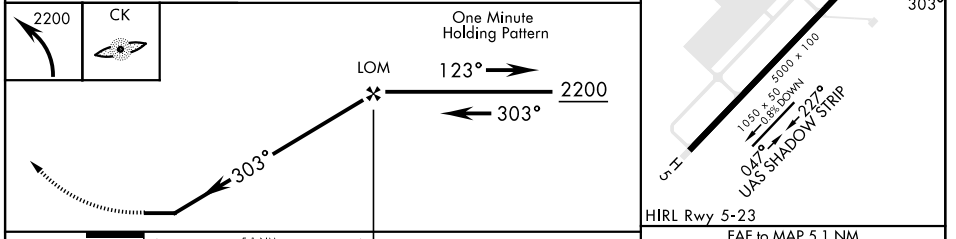
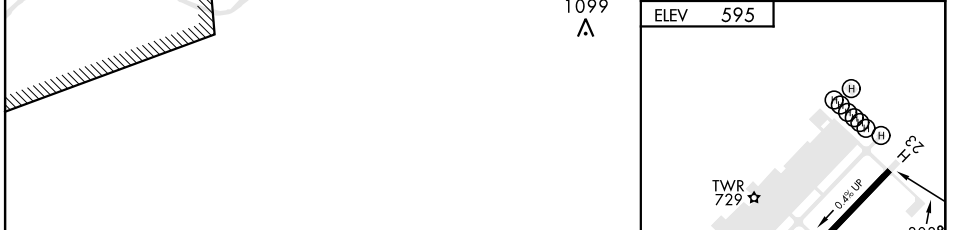
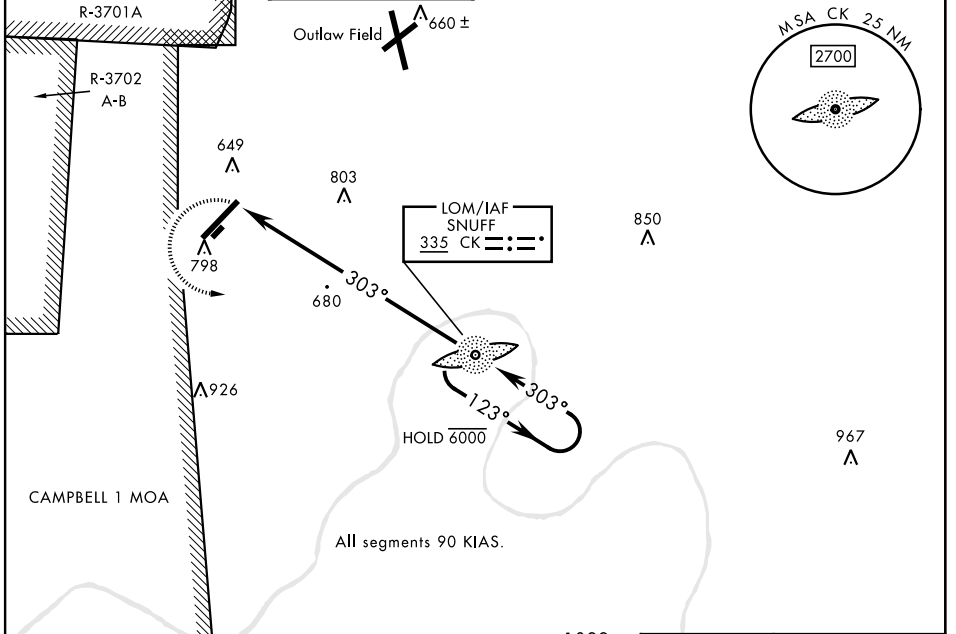
23250

COPTER NDB 303°

LOM CK 335	APCH CRS 303°	Rwy Idg TDZE Arpt Elev N/A N/A 595	AL-6373 [USA]	SABRE AAF (FORT CAMPBELL) (KEOD)
----------------------	-------------------------	--	---------------	----------------------------------

RADAR required (for procedure entry)		MISSED APPROACH: Climbing left turn to 2200 direct CK LOM and hold.			
When local altimeter setting not received, use Fort Campbell, KY altimeter setting.					

ATIS 306.5	CAMPBELL APP CON 134.35 307.025	TOWER ★ 124.675 (CTAF) 290.45	GND CON 142.975 267.3	CLNC DEL 237.6	EAGLE RADIO 285.7	ASR
----------------------	---	---	---------------------------------	--------------------------	-----------------------------	-----



CATEGORY	COPTER				
H-303°	1080-½	485	(500-½)		
FAF to MAP 5.1 NM					
Knots	45	60	75	90	105
Min:Sec	6:48	5:06	4:05	3:24	2:55

CLARKSVILLE, TENNESSEE 36°34'N-87°29'W SABRE AAF (FORT CAMPBELL) (KEOD)

Amdt 6B 20JUN19

COPTER NDB 303°

SE-1, 03 OCT 2024 to 31 OCT 2024

SE-1, 03 OCT 2024 to 31 OCT 2024