

COPTER RNAV (GPS) Y RWY 23

APCH CRS	Rwy Idg	5000
227°	THRE	573
	Arpt Elev	595

AL-6373 [USA]

SABRE AAF (FORT CAMPBELL) (KEOD)

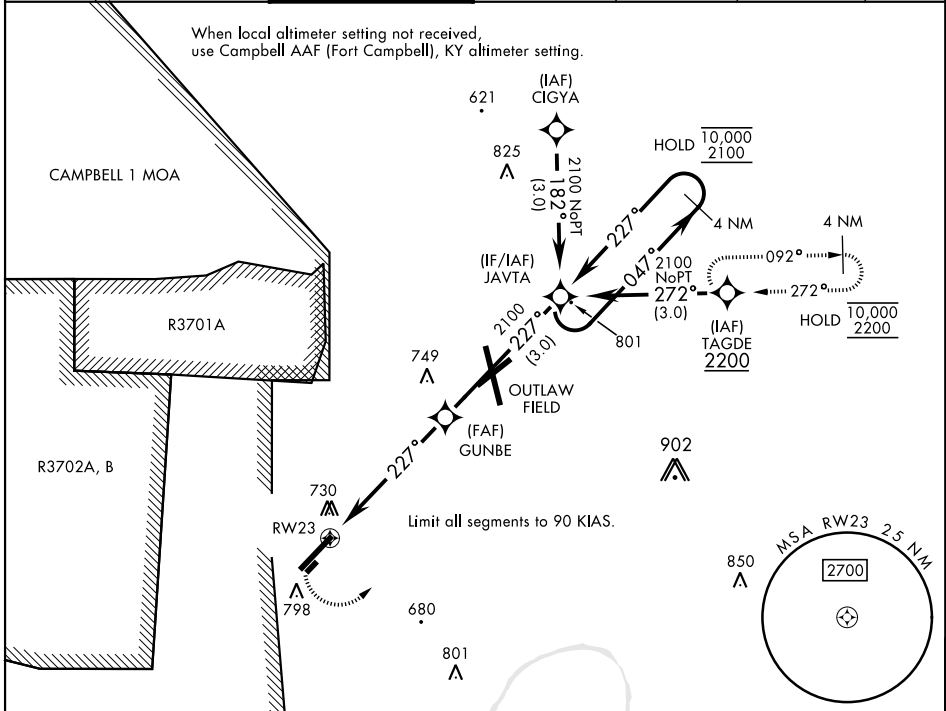
RNP APCH - GFS

RADAR required

MISSED APPROACH: Climbing left turn to 2200 direct TAGDE and hold.

ATIS	CAMPBELL APP CON	TOWER ★	GND CON	CLNC DEL	EAGLE RADIO	ASR
306.5	134.35 307.025	124.675 (CTAF) 290.45	142.975 267.3	237.6	285.7	

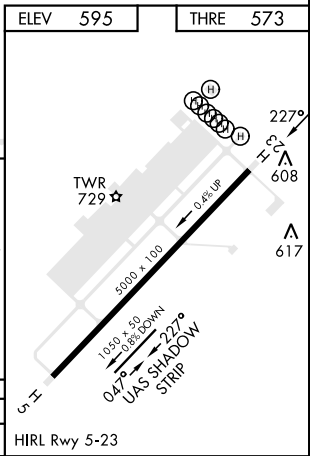
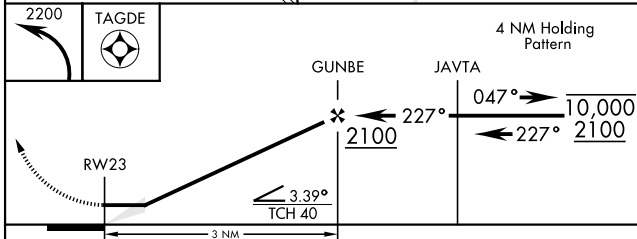
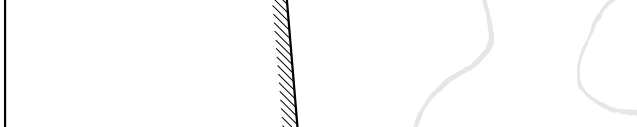
When local altimeter setting not received, use Campbell AAF (Fort Campbell), KY altimeter setting.



SE-1, 03 OCT 2024 to 31 OCT 2024

SE-1, 03 OCT 2024 to 31 OCT 2024

ELEV	595	THRE	573
------	-----	------	-----



CATEGORY	COPTER			HIRL Rwy 5-23
LNAV MDA	1060-1	473	(500-1)	

COPTER RNAV (GPS) Y RWY 23