

CLARKSVILLE, TENNESSEE

COPTER RNAV (GPS) Y RWY 5

| | | |
|----------|------------|------|
| APCH CRS | Rwy ldg | 5000 |
| 047° | TDZE | 595 |
| | Arprt Elev | 595 |

AL-6373 [USA]

SABRE AAF (FORT CAMPBELL) (KEOD)

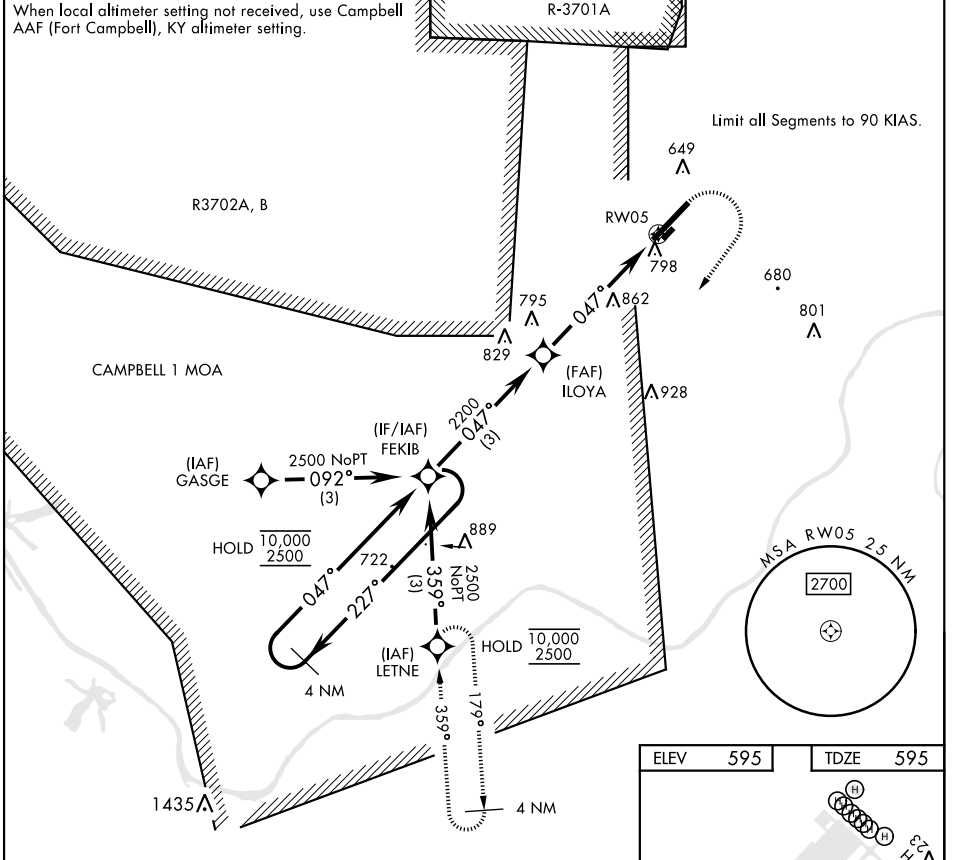
RNP APCH - GPS

RADAR required

MISSED APPROACH: Climbing right turn to 2500 direct LETNE and hold.

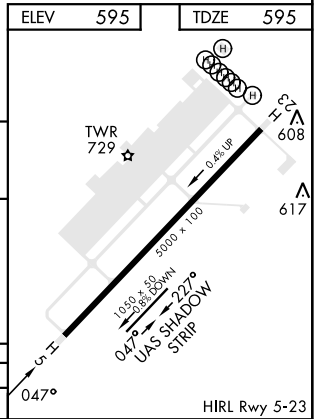
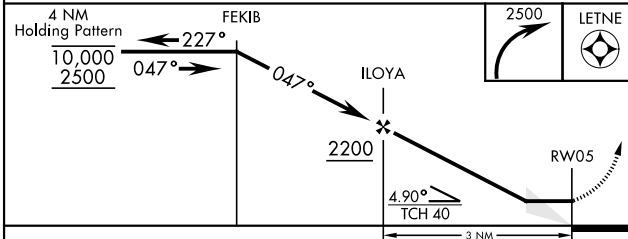
| ATIS | CAMPBELL APP CON | TOWER ★ | GND CON | CLNC DEL | EAGLE RADIO | ASR |
|-------|------------------|-----------------------|---------------|----------|-------------|-----|
| 306.5 | 134.35 307.025 | 124.675 (CTAF) 290.45 | 142.975 267.3 | 237.6 | 285.7 | |

When local altimeter setting not received, use Campbell AAF (Fort Campbell), KY altimeter setting.



SE-1, 03 OCT 2024 to 31 OCT 2024

SE-1, 03 OCT 2024 to 31 OCT 2024



| | | | |
|----------|--------|-----|---------|
| CATEGORY | COPTER | | |
| LNAV MDA | 1180-1 | 585 | (600-1) |

CLARKSVILLE, TENNESSEE

36°34'N-87°29'W

SABRE AAF (FORT CAMPBELL) (KEOD)

Amdt 3 07SEP23

COPTER RNAV (GPS) Y RWY 5

HIRL Rwy 5-23