

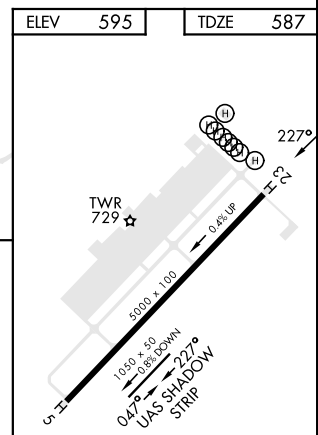
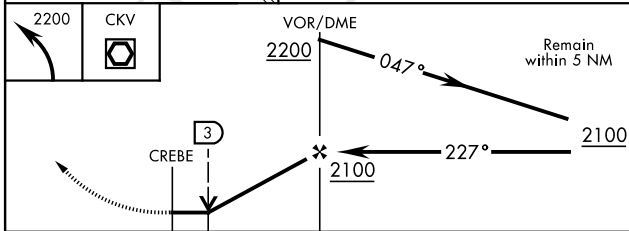
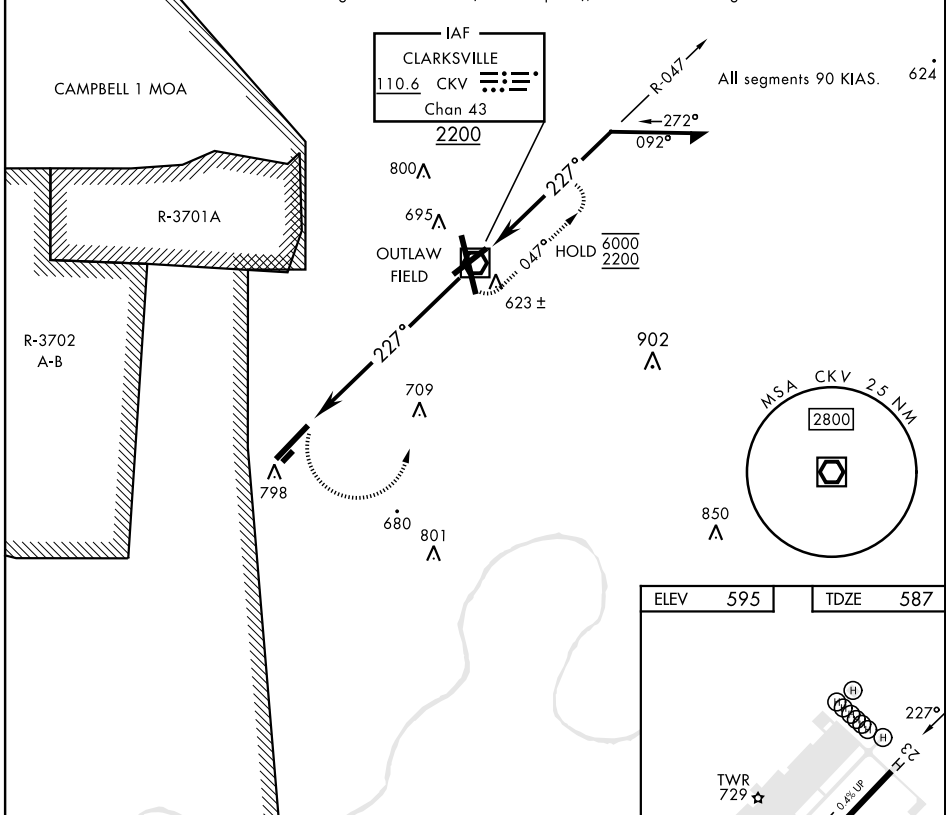
# COPTER VOR RWY 23

VOR/DME CKV <b>110.6</b> Chan <b>43</b>	APCH CRS <b>227°</b>	Rwy Idg TDZE Arprt Elev <b>5000</b> <b>587</b> <b>595</b>	AL-6373 [USA]	SABRE AAF (FORT CAMPBELL) (KEOD)
---	-------------------------	--	---------------	----------------------------------

RADAR required		MISSED APPROACH: Climbing left turn to 2200 direct CKV VOR/DME and hold.			
----------------	--	--	--	--	--

ATIS <b>306.5</b>	CAMPBELL APP CON <b>134.35 307.025</b>	TOWER ★ <b>124.675 (CTAF) 290.45</b>	GND CON <b>142.975 267.3</b>	CLNC DEL <b>237.6</b>	EAGLE RADIO <b>285.7</b>	ASR <b>608</b>
----------------------	---	---	---------------------------------	--------------------------	-----------------------------	-------------------

When local altimeter setting not received, use Campbell AAF (Fort Campbell), KY altimeter setting.  
VDP NA when using CAMPBELL AAF (Fort Campbell), KY altimeter setting.



CATEGORY	COPTER		FAF to MAP 4.2 NM					
H-23	1060-1	473 (500-1)	Knots	45	60	75	90	105
			Min:Sec	5:36	4:12	3:22	2:48	2:24

# COPTER VOR RWY 23

SE-1, 03 OCT 2024 to 31 OCT 2024

SE-1, 03 OCT 2024 to 31 OCT 2024