

WAAS CH 77622 W15A	APP CRS 148°	Rwy ldg TDZE Apt Elev	4000 1061 1062
--	------------------------	-----------------------------	---

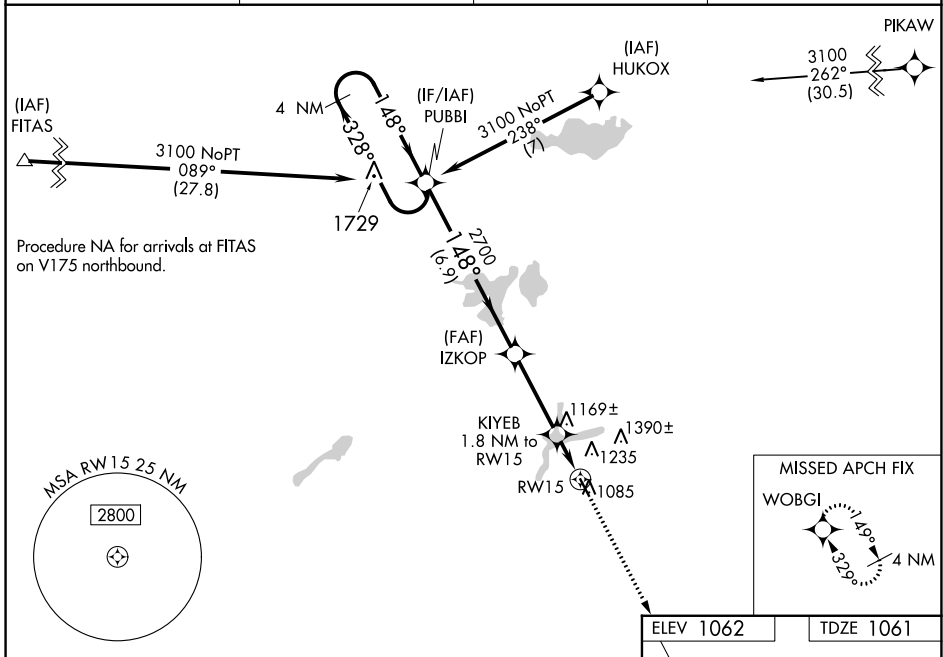
RNAV (GPS) RWY 15

HUTCHINSON MUNI/BUTLER FLD (HCD)

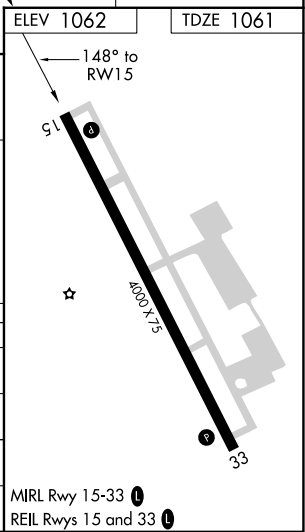
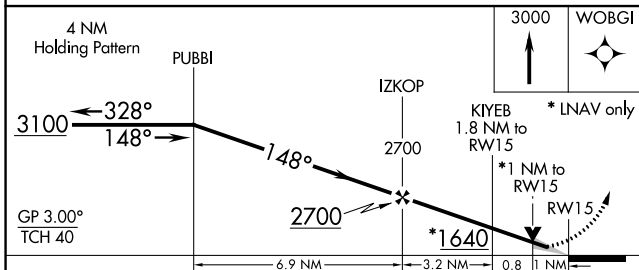
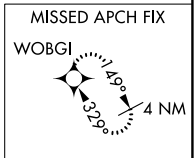
⚠ Baro-VNAV NA when using Glencoe altimeter setting. For uncompensated Baro-VNAV systems, LNAV/VNAV NA below -17°C (2°F) or above 54°C (130°F). DME/DME RNP-0.3 NA. VDP NA with Glencoe altimeter setting. When local altimeter setting not received, use Glencoe altimeter setting and increase all DA 43 feet and LPV and LNAV/VNAV all Cats visibility 1/8 mile; increase all MDA 60 feet and LNAV Cat C visibility 1/4 mile.

MISSED APPROACH: Climb to 3000 direct WOBGI and hold.

AWOS-3 118.525	MINNEAPOLIS CENTER 127.1 290.2	GCO 121.725	UNICOM 122.8 (CTAF) 0
--------------------------	--	-----------------------	--



Procedure NA for arrivals at FITAS on V175 northbound.



CATEGORY	A	B	C	D
LPV DA	1311-7/8	250 (300-7/8)		NA
LNAV/VNAV DA	1328-7/8	267 (300-7/8)		NA
LNAV MDA	1420-1	359 (400-1)		NA
CIRCLING	1540-1	478 (500-1)	1740-2 678 (700-2)	NA

NC-1, 03 OCT 2024 to 31 OCT 2024

NC-1, 03 OCT 2024 to 31 OCT 2024