

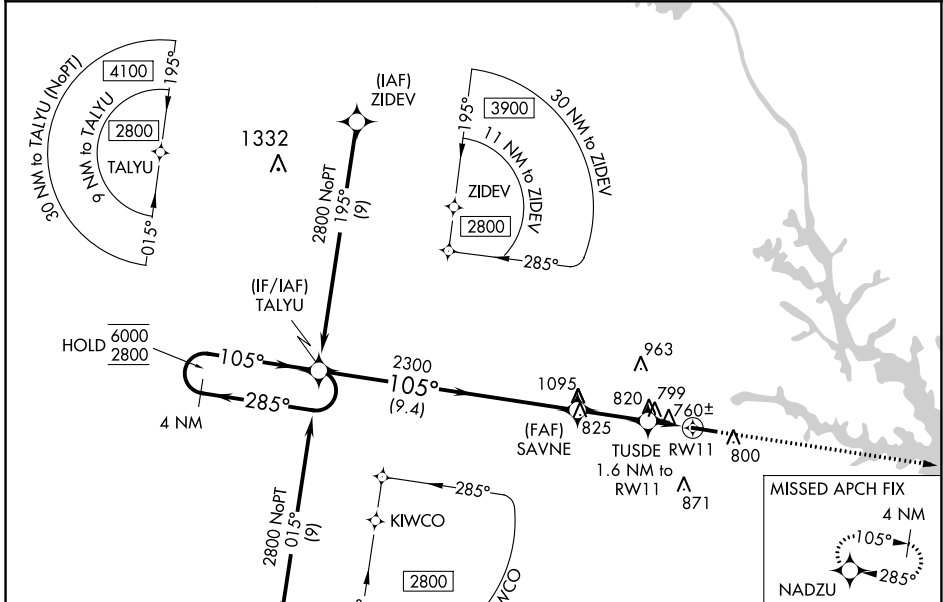
WAAS CH <b>56346</b> <b>W11A</b>	APP CRS <b>105°</b>	Rwy Idg <b>5004</b> TDZE <b>615</b> Apt Elev <b>615</b>
--	------------------------	---

# RNAV (GPS) RWY 11

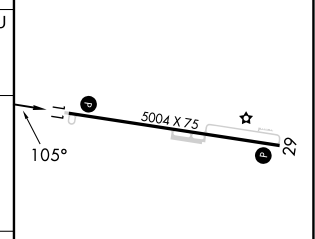
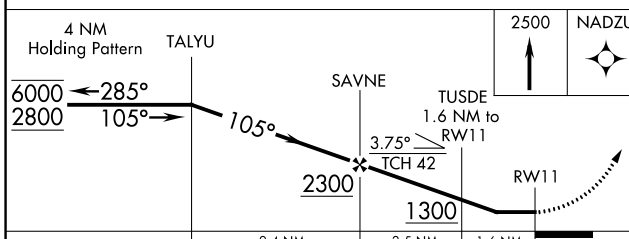
ELBERT COUNTY-PATZ FLD (EBA)

RNP APCH - GPS.	MISSED APPROACH: Climb to 2500 direct NADZU and hold.
<b>⚠</b> Procedure NA at night. Rwy 11 helicopter visibility reduction below 1 SM NA.	

AWOS-3 <b>118.15</b>	ATLANTA CENTER <b>127.5 316.05</b>	UNICOM <b>122.8 (CTAF) 1</b>
-------------------------	---------------------------------------	---------------------------------



ELEV 615	TDZE 615
----------	----------



CATEGORY	A	B	C	D
LP MDA	1060-1	445 (500-1)	1060-1 $\frac{3}{8}$ 445 (500-1 $\frac{3}{8}$ )	NA
LNAV MDA	1120-1	505 (600-1)	1120-1 $\frac{3}{8}$ 505 (600-1 $\frac{3}{8}$ )	NA
<b>C</b> CIRCLING	1160-1	545 (600-1)	1280-1 $\frac{3}{4}$ 665 (700-1 $\frac{3}{4}$ )	NA

MIRL Rwy 11-29 1
------------------

SE-4, 03 OCT 2024 to 31 OCT 2024

SE-4, 03 OCT 2024 to 31 OCT 2024